

TECHNICAL SPECIFICATION FOR LORRY CRANE

GENERAL

- . Model **HLC-10015**
- . Manufacturer **Hankook Tower Crane ('HKTC')**
- . Type **Telescopic Lorry Crane**
- . Main operation **By Top Seat Console**
- . Applicable Truck **Over 11.0 ton payload**
- . Crane net weight **6,560 kg**

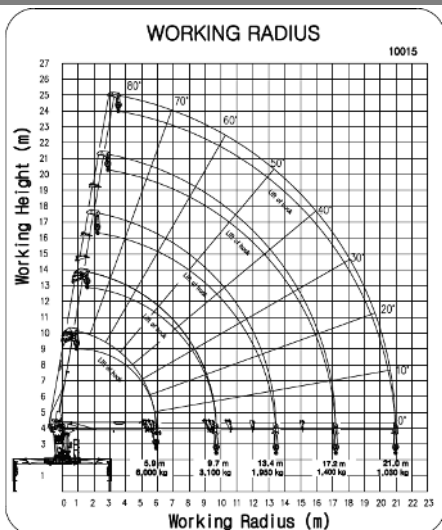
PERFORMANCE

- . Max. lifting capacity **36 ton.m**
(12 ton / 2.0 m)
- . Max. lifting height **24.0 m**
- . Max. working radius **21.0 m**
- . Max. working height **24.7 m**

BOOM

- . Shape **Hexagonal**
- . Section **5**
- . Structure **2 Cylinders + 2 Wires**
- . Angle **0° ~ 80°**

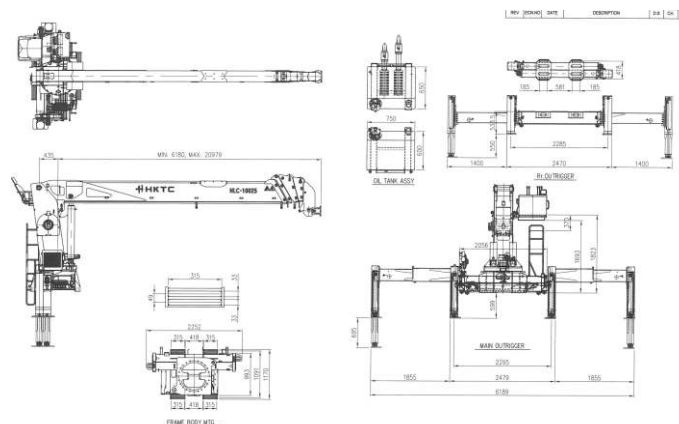
WORKING RANGE



. Max. rated Load: 12,000 kgf / 2.0 m

Load Capacity (kgf/m)	6,000 / 5.9	1 st Boom
	3,100 / 9.7	2 nd Boom
	1,980 / 13.4	3 rd Boom
	1,400 / 17.2	4 th Boom
	1,030 / 21.0	5 th Boom

EXTERIOR



BODY

- . Slewing Type **Worm gear reduction & Hydraulic Brake**
- . Slewing Angle **Unlimited 360°**
- . Slewing Speed **2 rpm**

WINCH

- . Type **Spur gear reduction & Mechanic Brake**
- . Wire Rope **Φ 14 X 100m**
- . Safety Device **Winch safety latch**

HYDRAULIC FLUIDS

- . Rated Flow **100*100 ℓ / min @ 1,000 rpm**
- . Rated Pressure **210 kgf / cm²**
- . Oil Tank **250 ℓ**

OUTRIGGER

- . Outrigger No. **4**
(Main: 2 Rear 2)
- . Outrigger Type **Main: Box Type by Hydraulic**
Rear: Height adjustable By Hydraulic

SAFETY DEVICES

- . Devices **Pressure Relief Valve**
Counter Balance Valve
Pilot-operated Check Valve
Boom angle indicator
Hook safety Latch
Mechanical Winch Brake
Warning Alarm
Emergency Stop Switch
Over-winding Alarm
Over-winding Prevention
Over-loading Prevention
Wire-separation Prevention

TECHNICAL SPECIFICATION FOR LORRY CRANE

GENERAL

- . Model **HLC-10015**
- . Manufacturer Hankook Tower Crane ('HKTC')
- . Type Telescopic Lorry Crane
- . Main operation **By Top-Seat Console**
- . Applicable Truck Over 11.0 ton payload
- . Crane net weight 6,560 kg

DECAL & STICKER

- . Language English
- . Exterior Color Ever-Green

CONVENIENCE

Working Lamp
Hydraulic Pump

OPTION

- . Option
 - Automatic Moment Limiter
 - Steel Bucket or F.R.P Bucket
 - Temperature Sensor (For Cold Region)
 - Remote Controller
 - Self-loading main outrigger
 - Hydraulic Pump (100*100 ℓ / min @ 1,000 rpm) (To be applied)**

SUPPLY SCOPE

- . Excluding Power Take Off, Hoses and Truck Chassis

. Remarks

- . The specifications are subject to change, without prior-notice, according to product improvements.
- . Rated Loads and capacity can be changed, according to crane strength, vehicle weight, loaded condition, crane mounting position, operating condition and the likes.
- . The above-mentioned rated loads are in the basis of no-load at rated oil flow condition.
- . All rights reserved. No. part of this publication may be reproduced or distributed in any form or by any means, without prior permission of HKTC.

RATED CAPACITY

LOAD CHART																				
Radius(m) BOOM	1	2	3	4	5	6	7	8	9	10	11	12	13	14	15	16	17	18	19	20
1st	12000	10000	7960	6950	5940(5.9m)															
2nd	8470	7700	6220	5070	4460	4080	3760	3430	3120(9.67m)											
3rd	6000	5710	5430	4840	4110	3570	3220	2940	2720	2560	2390	2150	1980(13.44m)							
4th		4990	4520	4310	3740	3350	2950	2660	2560	2440	2230	1940	1830	1730	1620	1470	1400(17.21m)			
5th				3660	3410	3170	2920	2680	2440	2200	2030	1890	1760	1640	1520	1420	1370	1320	1250	1170

NOTE

- Conditions of the load chart(Solid and flat ground, including weight of hook and wire rope)
- The load chart can be changed, according to crane strength,loaded condition, crane mounting position and the likes.
- The load chart are subject to change without prior-notice, according to product improvements.