

Great things come in small packages

MK 140 mobile construction crane

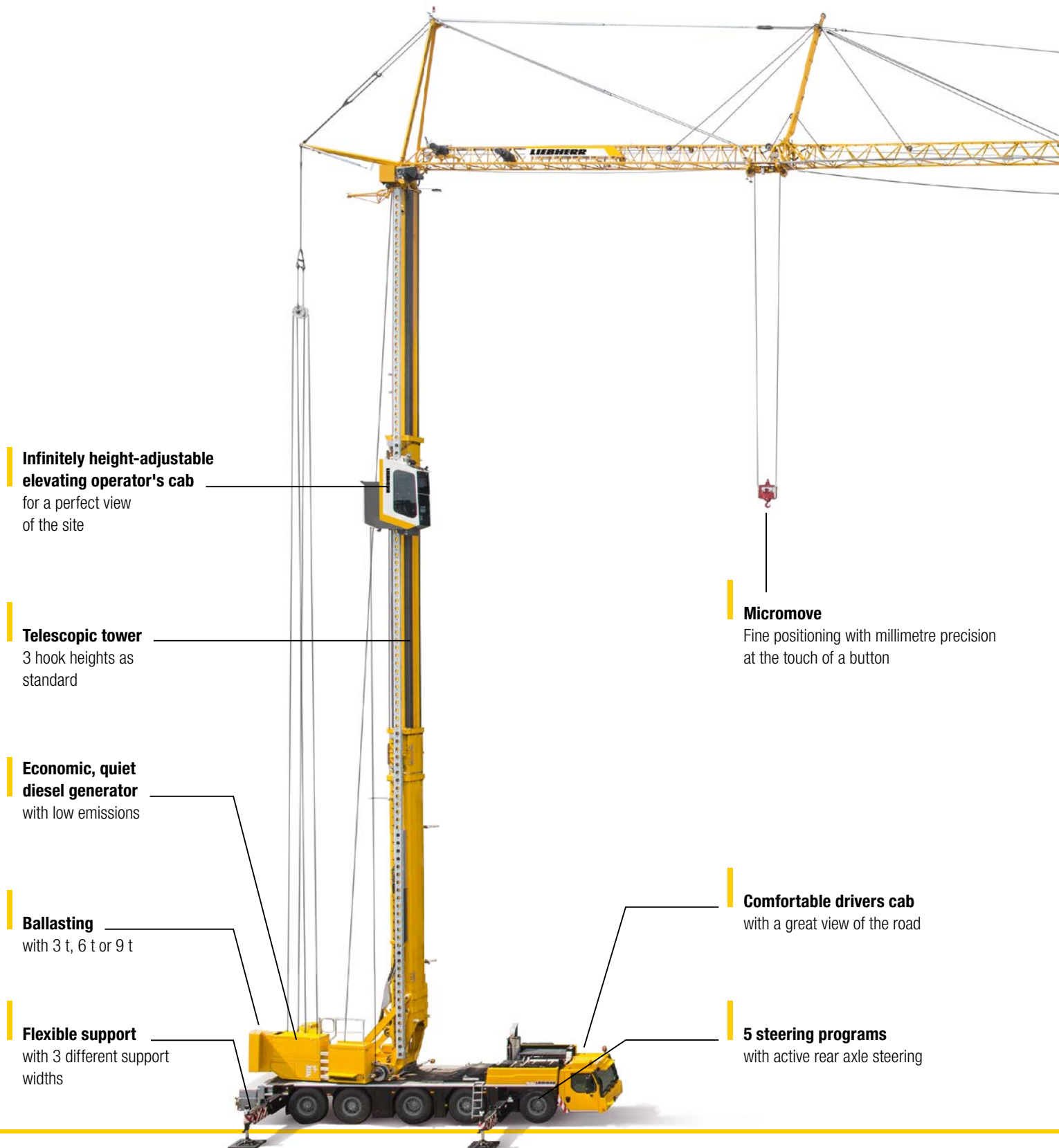
Technical data

VarioJib	Trolley mode	Luffing mode
Max. lifting capacity	8,000 kg	
Max. radius	58.5 m	65.0 m
Max. lifting capacity at the jib head	1,900 kg	1,700 kg



LIEBHERR

MK 140 mobile construction crane



**Infinitely height-adjustable
elevating operator's cab**

for a perfect view
of the site

Telescopic tower

3 hook heights as
standard

**Economic, quiet
diesel generator**

with low emissions

Ballasting

with 3 t, 6 t or 9 t

Flexible support

with 3 different support
widths

Micromove

Fine positioning with millimetre precision
at the touch of a button

Comfortable drivers cab

with a great view of the road

5 steering programs

with active rear axle steering

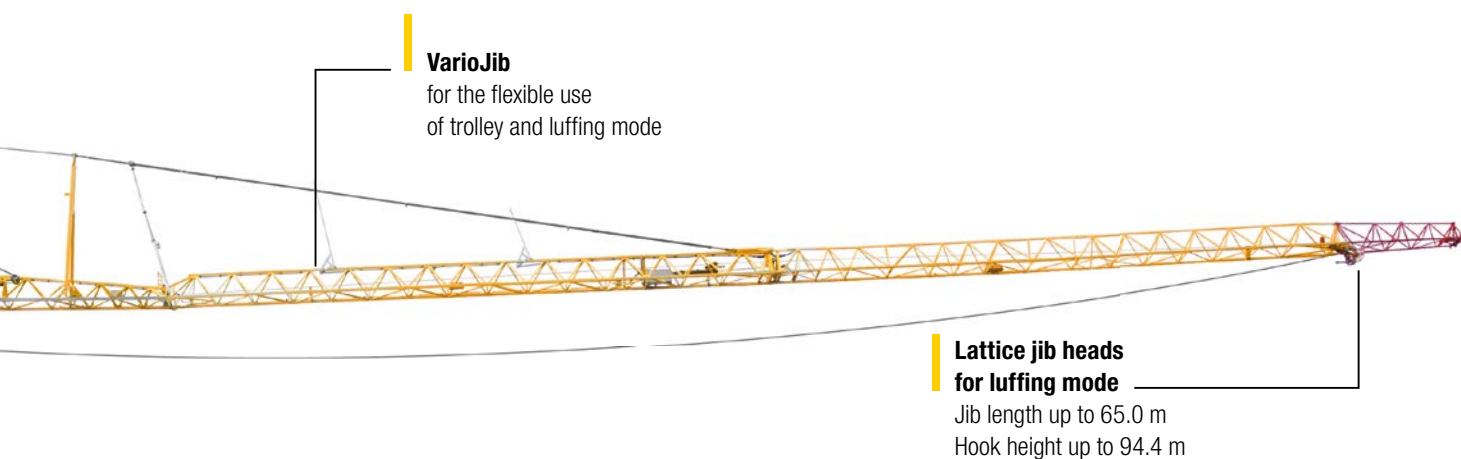
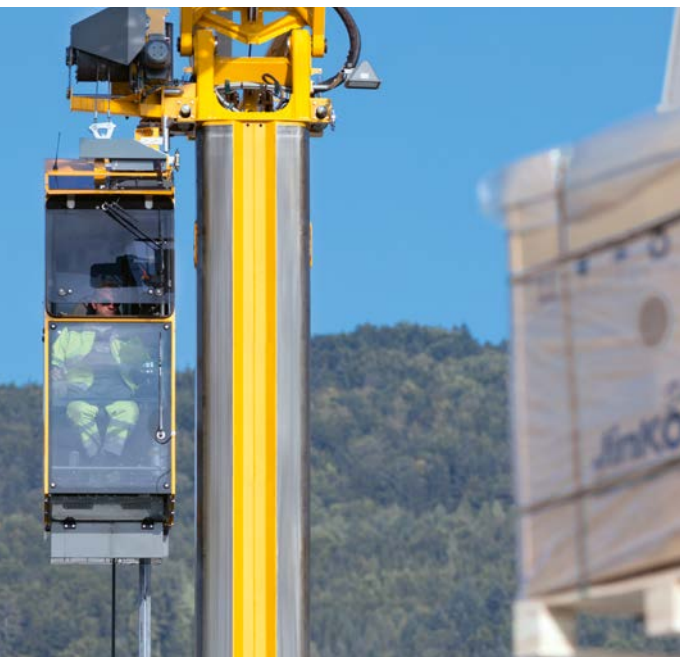


Table of contents

MK 140 mobile construction crane.....	2 – 3
MK mobile construction cranes at work	4 – 5
The highlights of the MK 140.....	8 – 9
Work quickly and safely.....	10 – 11
Your success is our driving force.....	12 – 13
Have a good trip.....	16 – 17
Simply well set up	18 – 19
Superbly equipped.....	20 – 21
Tower Crane Service.....	22 – 23

MK mobile construction cranes at work



Operational situations

- Inner city and night-time sites
- Timber, steel, and hall construction
- Refineries and chemical plants
- Antenna construction
- Roof refurbishment and greenery
- Placement of solar panels
- Window and facade construction
- High-level storage bay units
- Bridge and highway construction
- Maintenance and repair work
- Prefabricated component and prefabricated building construction
- Demolition and installation work
- Site preparation work
- and much more besides

Advantages of MK mobile construction cranes

Operation with interfering edges: The vertical tower allows for Liebherr mobile construction cranes to be erected and operated directly at the building. Take advantage of the full jib length, with high lifting performance at maximum radius.

Taxi crane concept: High mobility without any major logistical effort needed – arrive, lift, move on, without any extra transport involved.

Incredible manoeuvrability: Thanks to the active rear axle steering, Liebherr mobile construction cranes can slip into any gap between buildings.

One-man operation: Transport, erection, and the entire operation of the crane – and only one person required. No need for expensive extra transport or additional erection and assembly personnel.

Small space requirement: When things get tight – that's when the mobile construction crane really shows off its strengths. The crane needs only a very small amount of space for erection and operation.





The highlights of the MK 140

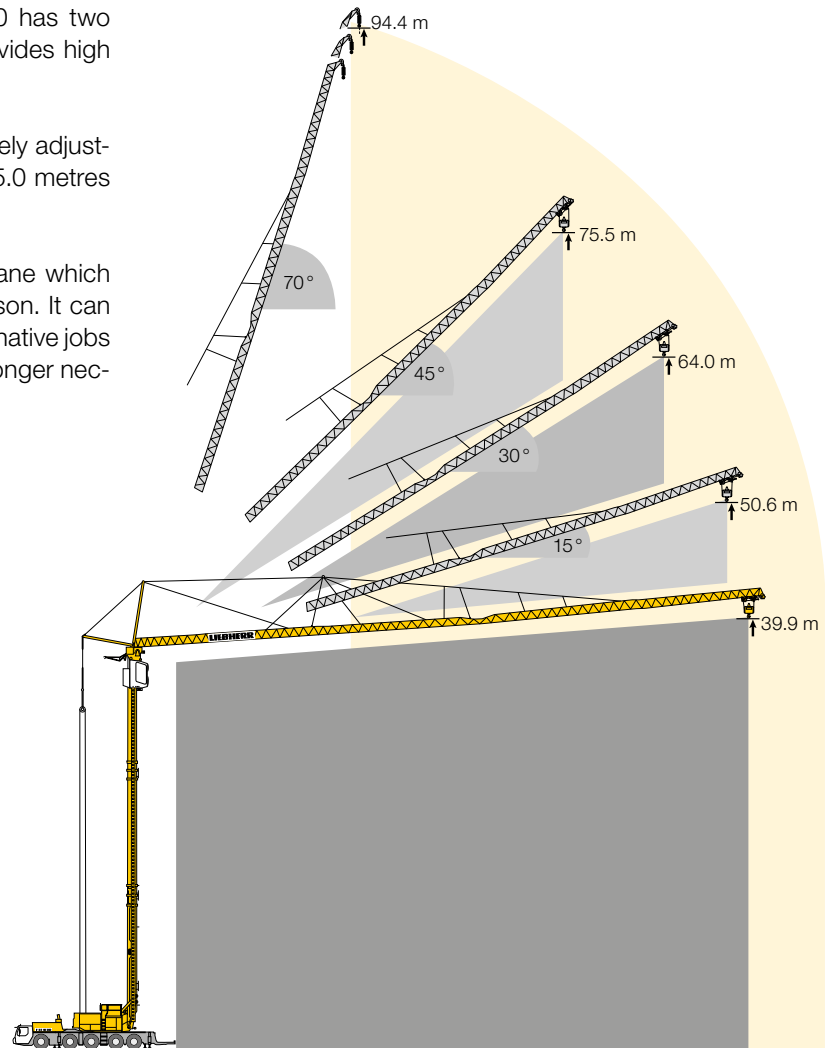


The VarioJib

The new VarioJib concept means that the MK 140 has two operating modes. The time-tested trolley mode provides high handling capacity with the trolley.

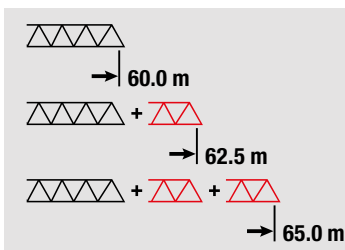
In luffing mode the MK 140 moves the load by infinitely adjusting the jib which enables it to achieve a radius of 65.0 metres and a hook height of 94.4 metres.

These performance values are unique for a taxi crane which can be set up quickly and operated by a single person. It can slew above and below obstacles and expensive alternative jobs for lightweight loads at great heights or radii are no longer necessary.



3 jib lengths

In luffing mode the jib can be extended flexibly with 2 lattice jib heads.



Ballast concept

With 3 additional ballast parts, the ballasting can be adjusted in modular form.



Half-sided support

For flexible use on constricted sites.



Comfortable elevating operator's cab

Excellent visibility, roomy and well air-conditioned.

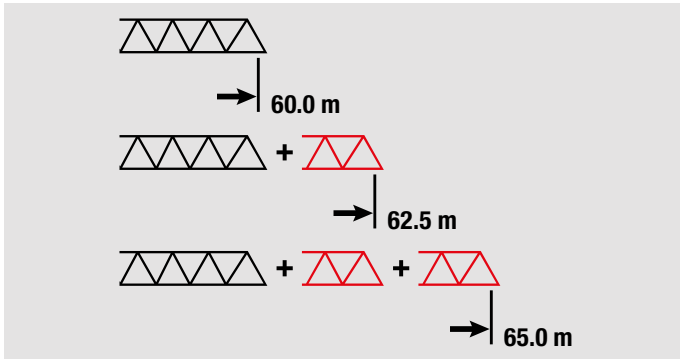


Work quickly and safely



Comfortable cabin level with the load

The infinitely height-adjustable elevating operator's cab provides an excellent all-round view of the site due to its large glass surfaces. The crane driver can keep his eye on the load and the site personnel at all times. That ensures a smooth process for transporting the load and enhances safety for personnel, the load and the crane. The cabin has an ergonomic control stand with a comfortable, heated driver's seat and display systems such as the EMS electronic monitoring system and the hook camera. The temperature in the cabin can be controlled perfectly using the combined heating and air conditioning system. This wide range of equipment allows the crane driver to work efficiently without fatigue.



Flexibly adjustable

The two additional lattice jib heads enable you to adjust your radius to the current site situation. They enable you to achieve a radius of up to 65.0 m in luffing mode.



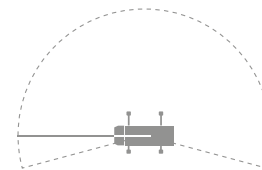
Load hook in luffing mode

The load hook for luffing mode is carried on the crane at all times. Thanks to its extremely small diameter, it is also possible to work in constricted site situations, for example between building walls and scaffolds.



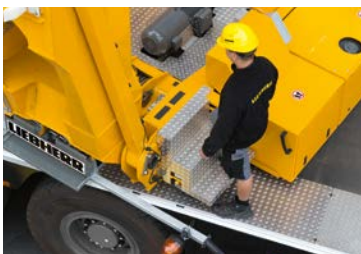
No half measures

For jobs where there is little space available, the load can also be handled using half-sided support. In this situation, the mobile construction crane can provide its full lifting capacity curve on the side with the fully extended outriggers. The range available in full is 210°.



Easy access

The integral access ladder and a small step from the undercarriage to the slewing crane superstructure ensures that the driver has safe access to the cabin in any situation. Access to the elevating operator's cab is also convenient and safe with no awkward climbing.

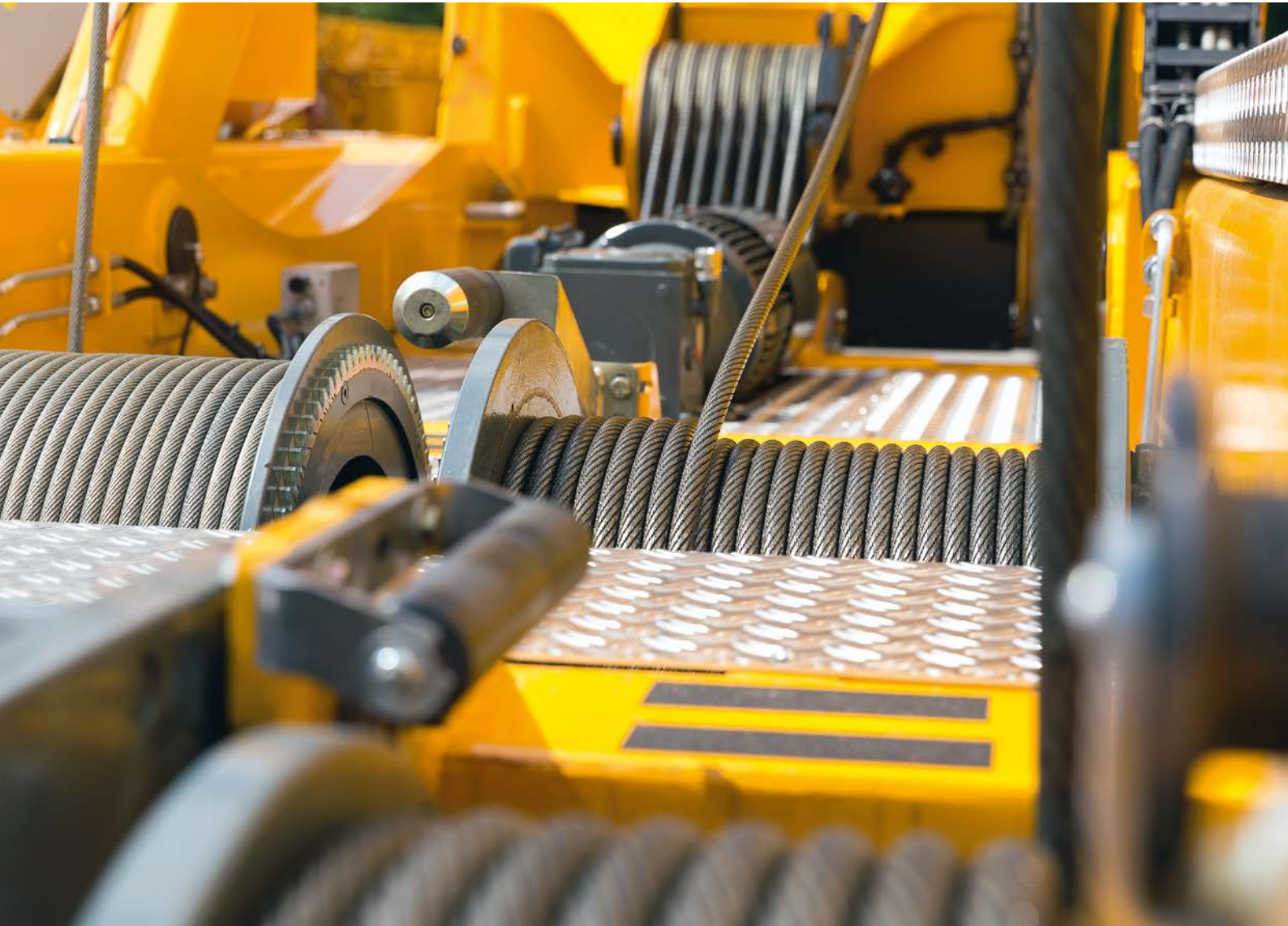


In an emergency

The elevating operator's cab can be lowered using an emergency release if necessary.



Your success is our driving force



Control system

The electric heavy-duty drive units developed and manufactured by Liebherr are specially tailored to the needs of crane operations. The integral diesel generator in the superstructure enables the crane to be operated independently of a power supply. The undercarriage engine is not required for the assembly and site work. This saves you fuel and protects the environment.



The programmable logic control PLC

This provides greater comfort and safety during assembly and operation. Assistance systems such as the operating-range limiting system, oscillation damping system and wind force moment control help to ensure safe crane operation.



Automatic set-up status registration

The intelligent control system monitors safety aspects of the crane configuration such as the support width, ballasting, fitted jib heads and operating mode. The crane driver is given suggestions on the current configuration of the crane and must then confirm them. That ensures enhanced safety on site and a good feeling when operating the machine.

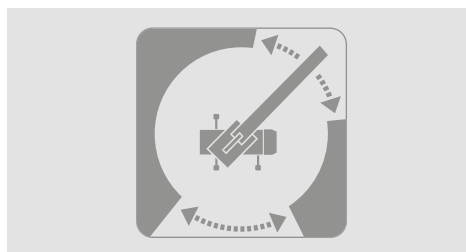
Plus package

Increase of the lifting capacity by approximately 10% by the controller-supported adjustment of speeds.



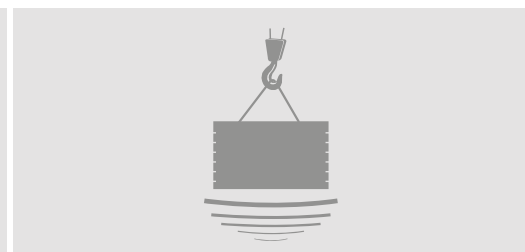
Operating-range limiting system ABB

Limit the working range by a simple teach-in process in the EMS display – greater safety for everybody.



Micromove fine positioning mode

Without engaging the hoist gear brake even very heavy loads can be held and positioned very accurately.







Have a good trip



Clear view

Good visibility is a basic requirement for safety in road traffic and on site. The MK cranes from Liebherr put nothing in the way to obstruct your view. The short overhangs and compact transport dimensions ensure that you get to the site safely. The modern driver's cab has an ergonomic design and provides the driver with maximum comfort even on long journeys.



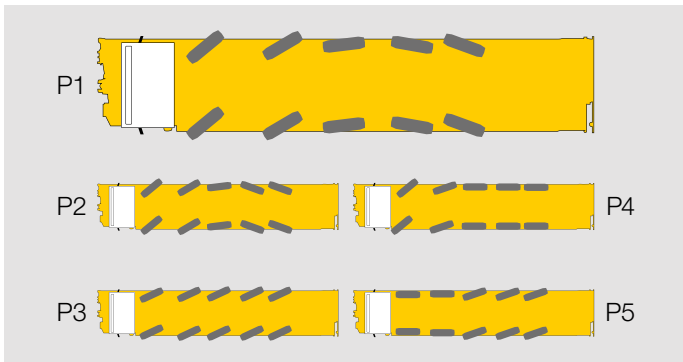
Well stowed

An additional lattice jib head can remain on the crane during transport, assembly and operation in trolley mode. This makes the MK 140 ready for action quickly at any time up to a radius of 62.5 m without additional transport or assembly.



Mobility in the city and elsewhere

The 5-axle chassis and compact transport dimensions enable the crane to work in tight urban areas. The high ground clearance and modern drive concept mean that the crane can also drive safely in difficult terrain.



Fantastic manoeuvrability

The turning circle of the MK 140 is just 11.51 metres and its five steering programs make it perfectly prepared for any situation.

- P1 Road steering
- P2 All-wheel steering
- P3 Crab gear steering
- P4 Reduced swing-out dimension
- P5 Independent rear axle steering

Reversing camera
for safe manoeuvring
on site.



Excellent drivability
from the 6-cylinder engine
which meets current emission
standards.



Tyres
Large 14.00 R 25 crane tyres ensure
low tyre wear and high traction.



Intarder
Brake with zero wear using
the standard intarder.



Simply well set up



One-person assembly

The crane can be turned through 360° during assembly. Combined with the various assembly curves, the MK 140 is extremely adaptable. The programme-controlled assembly process is extremely safe. The crane driver can intervene at any time and change the assembly speed and direction. For jobs lasting several days, no dismantling is required with the crane being allowed to weathervane.



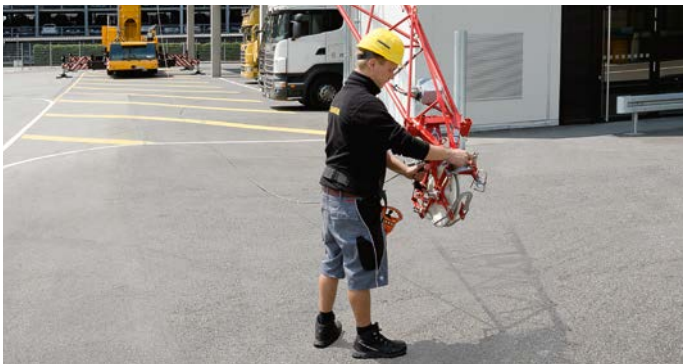
Flexible support

The standard support width is 8.2 m and can be reduced to 5.95 m if necessary – and all with low corner pressures. A medium support width of 6.95 m provides additional flexibility. In combination with the facility for half-sided support, this is really increasing flexibility.



Ballasting

No additional lifting gear is required to ballast the mobile construction crane. The crane positions the ballast parts using its load hook on the undercarriage and the ballast is fixed to the slewing platform using the hydraulic self-ballasting device. By operating it with the remote control, the crane driver can monitor the entire process. Depending on axle load restrictions, the ballast parts may also be able to remain on the crane during transport.



Two modes – one VarioJib

Only the jib has to be lowered, the hoist rope fixed point released and fixed to the second load hook to change between the two operating modes of the MK 140. This process can be completed in a few minutes. The installation of the optional one or two jib heads can also be completed by one person in a matter of minutes.

Move wirelessly

The remote control enables the driver to keep the crane, site and load in view at all times.



Always there

Sturdy base plates are stowed within easy reach in practical storage lockers.



Lattice jib head attachment

Attach quickly and easily and work with a radius of up to 65.0 m.



BTT unit

Individual selection and operation of the supports using the BTT Bluetooth unit.



Superbly equipped



Hook camera

You can keep the load in view at all times on the screen in the elevating operator's cab thanks to autofocus and zoom. The batteries are charged automatically to ensure that the camera system is always available. The camera is plug-in and can be used on the trolley (trolley mode) or on the jib head (luffing mode).



Combined heating and air conditioning system

The combined heating and air conditioning system enables you to control the temperature in the cabin perfectly – to ensure a pleasant, efficient working atmosphere regardless of the outdoor temperature.



Hand-held light

Mobile light whenever it is required.



MK planner

For easy crane job planning: calculate the corner pressures, display the lifting capacity curves and export 2-D/3-D drawings.



Equipment carrier

So that you always have what you need with you. The crane accessories can be carried safely on the large storage area. The tool carrier can be raised and lowered hydraulically and tilted up on site. There is an additional storage locker beneath the storage area.



Combination box

The combination box can carry tie ropes, belts, diesel canisters and chocks so that they are always available and protected from weather and theft.



Safety equipment

The safety package in the elevating operator's cab enables the crane driver to lower himself out of the cab in an emergency.



LiDAT

The data transfer and location system from Liebherr ensures that you always have the latest operating data for the crane in view. That enables you to manage the machine efficiently and plan its jobs and servicing perfectly. The teleservice LiTEL also makes remote maintenance possible to minimise downtimes on site.

Tower Crane Service



Well trained

Experienced trainers for theoretical and practical training, extensive courses and a training centre with the latest technical facilities enable us to provide a wide-ranging programme of basic and advanced courses relating to cranes. Our aim is to ensure well trained service technicians and crane drivers to help make site work cost-effective and safe.



Genuine spare parts

Genuine spare parts are perfectly tailored to every Liebherr crane. They meet very high standards in terms of quality and functionality. We transfer every improvement of our products immediately to our genuine spare parts.



Service and warranty

Consistent maintenance helps to ensure a long and successful crane service life. Repair, maintenance and renovation work on used machines is carried out expertly at our Liebherr repair centre.



Our 24/7 hotline

We can help you at any time. Talk to our experienced and competent MK specialists.

+49 7351 41-4000 (Mon. – Fri. from 8 am to 5 pm)

+49 176 178 922 48 (on-call service)

