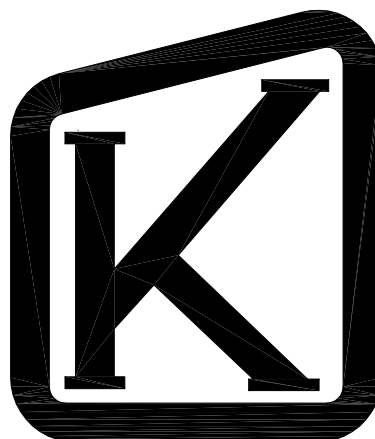
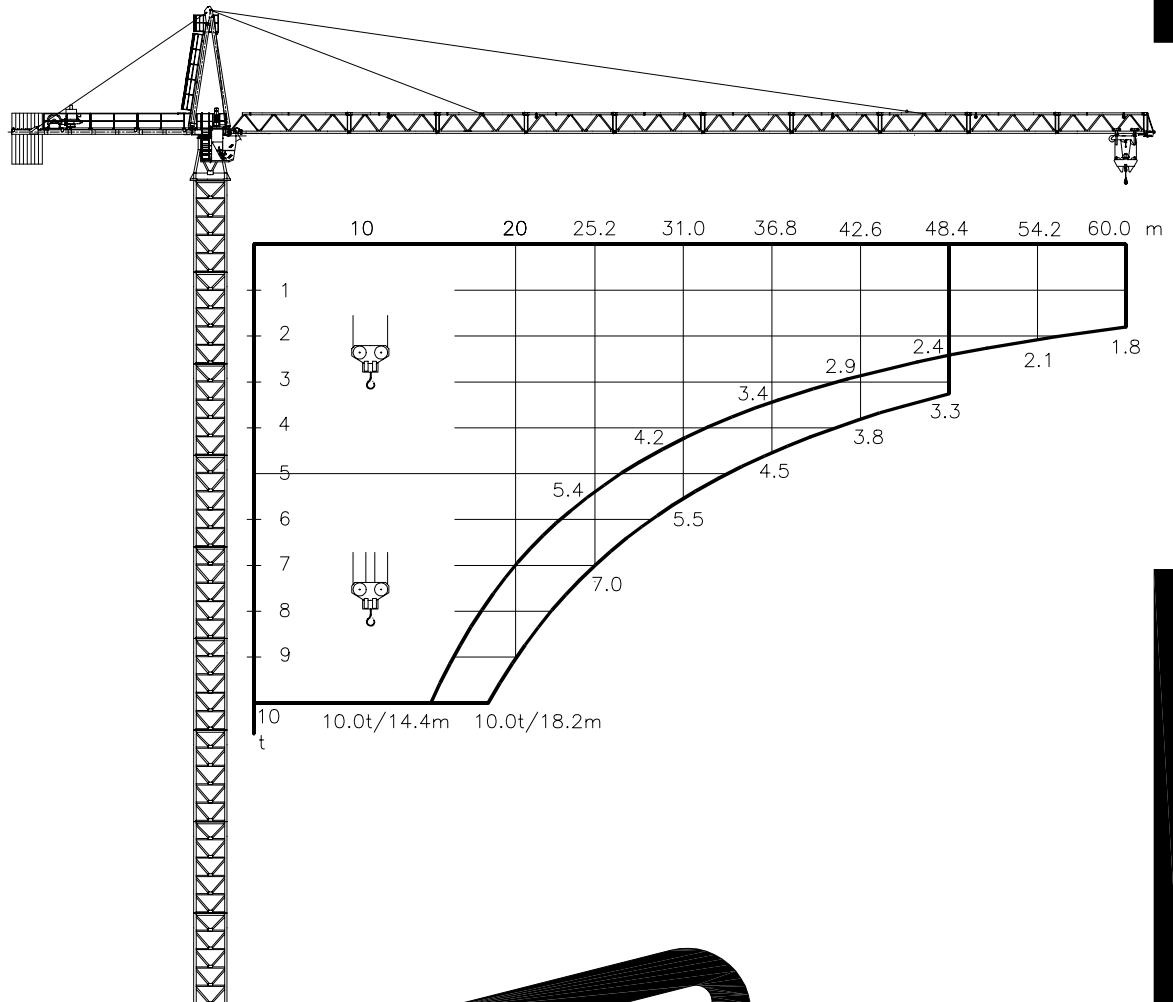


TECHNICAL DATA

K-160



**Mast sections
M22.1 / M22.2**

KRØLL CRANES A/S

Nordkranvej 2 · DK-3540 Lyngby · Denmark · Phone: +45 48 187400 · Fax: +45 48 188807

E-mail: krollcranes@krollcranes.dk · www.krollcranes.com

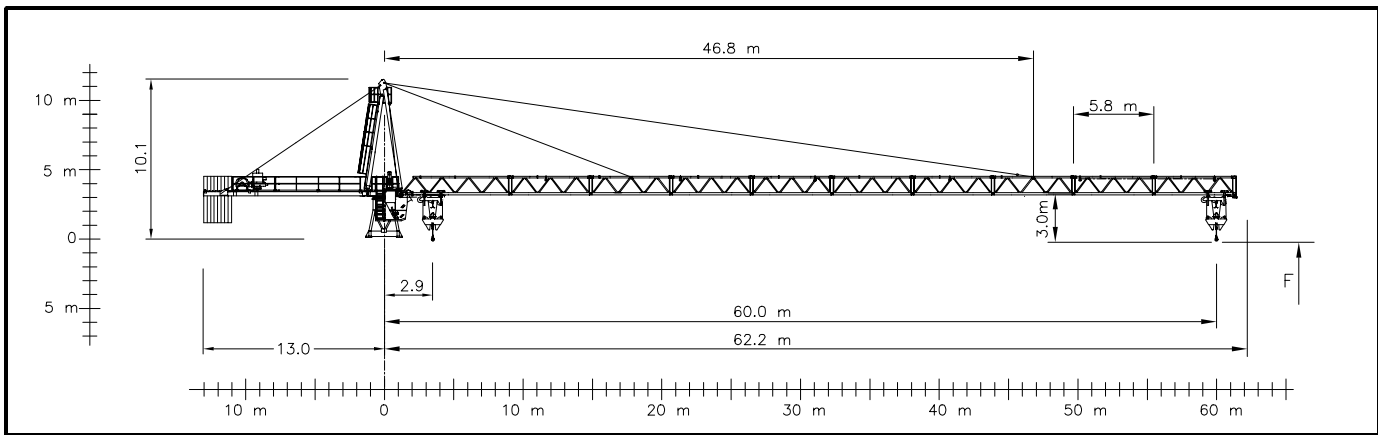
| | | |
|--|-------------------|-----------------------------------|
| | 3 x 400 V - 50 Hz | CONTROL VOLTAGE / STEUER SPANNUNG |
| | 3 x 440 V - 60 Hz | |

| | | | |
|--|----------|-------------------------|--------------|
| | 2 x 5 kW | MAX JIB MAX AUSLEGER | 0 - 0.7 RPM |
| | 7.1 kW | 10 t | 0 - 70 m/min |
| | 4 x 5 kW | F _{max} | 25 m/min |

| | | | |
|----------------------------------|---------------------|---------------------|---------------------|
| | HOIST WINCH/HUBWERK | 30 kW (optional) | 56 kW (standard) |
| POWER CONSUMPTION/STROMVERBRAUCH | | 60 kVA | 90 kVA |
| FUSE / SICHERUNG | | 100 Amps | 125 Amps |
| POWER CABLE / HAUPTKABEL | | 0-100 m | 4G35 |
| | | 100-175 m | 4G35 |
| | | 175-250 m | 4G95 |
| | 0-2500 kg | 0 - 60 m/min | 0 - 100 m/min |
| | 0-5000 kg | 0 - 30 m/min | 0 - 60 m/min |
| | 0-5000 kg | 0 - 30 m/min | 0 - 50 m/min |
| | 0-10000 kg | 0 - 15 m/min | 0 - 30 m/min |

| | |
|-------------------------------|--|
| HOIST ROPE / HUB-SEIL | ø15 mm - FILL FACTOR 0.65 - 1770 MPa BREAKING STRESS |
| | 56 kW HOIST WINCH |
| | 500 m |
| | >500 m * |
| TROLLEY ROPE / LAUFKATZE-SEIL | ø8 mm |

* CONSULT KRÖLL CRANES A/S - NEHMEN SIE MIT KRÖLL CRANES A/S KONTAKT AUF



APPROX. ERECTION WEIGHTS
UNGEFÄHRE MONTAGEGEWICHTE

| L | kg | POS | ITEM | kg | POS | ITEM | kg |
|----|-------|-----|-----------|------|-----|---------------|-------|
| 60 | 10200 | 1 | TOP TOWER | 2175 | 9 | B22-1, 6m | 7675 |
| 54 | 9700 | 2 | MASTHEAD | 3824 | 10 | B22-2, 6m | 10500 |
| 48 | 9200 | 3 | CABIN | 2000 | 11 | N22-1 | 1000 |
| 42 | 8700 | 4 | REAR JIB | 4668 | 12 | N22-2 | 1350 |
| 36 | 8200 | 5 | CTM1622 | 2500 | 13 | BASE PADS (4) | 888 |
| 31 | 7700 | 6 | M22-1 | 2553 | 14 | CT22 | 9000 |
| | | 7 | MO22-1 | 2740 | 15 | HOIST WINCH | 1875 |
| | | 8 | M22-2 | 4011 | 16 | | |

| | |
|---|--|
| EXTRA EQUIPMENT AVAILABLE | |
| WALL TIE FRAMES, CABLE DRUMS, CURVE RUNNING AND 90° TURN BOGIES, ELEVATOR, FLOOD LIGHTING | |
| ZUSÄTZLICHE AUSRÜSTUNG VERFÜGBAR | |
| EINSPANNRAHMEN, KABELTROMMEL, KURVENFAHRENDE UND 90° DREHSCHEMEL, AUFZUG, SCHEINWERFER | |

THE DESIGN AND TECHNICAL SPECIFICATIONS GIVEN ARE APPLICABLE TO THE STANDARD MACHINE OF CRANE K-160. MODIFICATIONS ACCORDING TO SPECIAL REQUIREMENTS REGARDING FOR EXAMPLE HOOK HEIGHT, JIB LENGTH, RAIL GAUGE, ETC.. ARE AVAILABLE. PLEASE CONTACT KRÖLL CRANES A/S

DIE KONSTRUKTIONS- UND TECHNISCHE DATEN BEZIEHEN SICH AUF DIE STANDARD AUSFÜHRUNG DES KRANTYPS K-160. INDIVIDUELLE FORDERUNGEN Z.B AN HAKENHÖHE, AUSLEGERLÄNGE, SPURWEITE USW. KÖNNEN BERÜCKSICHTIGT WERDEN. NEHMEN SIE MIT KRÖLL CRANES A/S KONTAKT AUF

| | | | | | |
|-------------------------------------|---------------|------------------------|-----|------------|--------|
| CONVERSION OF THE UNITS FOR FORCES | 10 N = 1 kg | SUBJECT TO ALTERATIONS | DIN | DATA SHEET | K-160 |
| UMRECHNUNG DER EINHEITEN FÜR KRÄFTE | 10 kN = 1 ton | ÄNDERUNGEN VORBEHALTEN | | DATABLATT | 010401 |