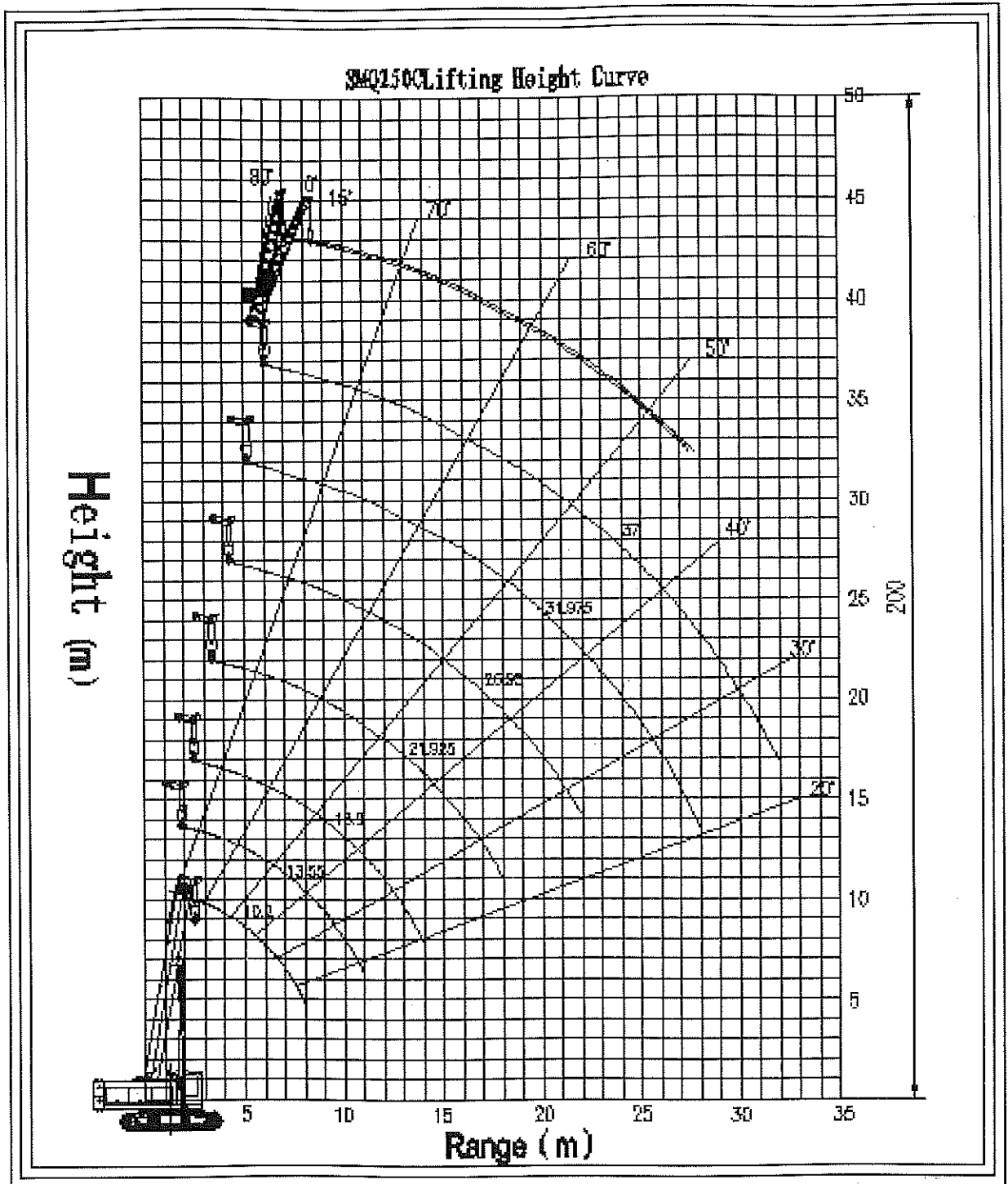


## ■ Main specification

Description	Item	Data	Unit	
Performance data	Max. rated hoisting weight	25	t	
	Amplitude for Max. rated hoisting weight	3	m	
	Max. moment	99	kN.m	
	Slewing radius for rear part of turn table	3.834	m	
	Boom length	Basic arm	10.2	m
		Max. boom length	37	m
		Max. boom length+jib	43.5	m
	Hoist height	Basic arm	9.8	m
		Max.boom length	36.8	m
		Max. boom length+jib	43.4	m
	Working speed	Max.slewing speed	1.8	r/min
		Boom raising time	43	s
		Arm descending time	39	s
		Fully extending time	73	s
		Fully retracting time	66	s
		Max.speed of main lifting	97	
	Max.speed of aux.lifting	90.5		
	Slewing angle	360°		
	Gradability	40%(21.8°)		
Size	Total length of whole body	13.07	m	
	Total width of whole body(working condition)	3 (4.3)	m	
	Total height of whole body	2.96	m	
Weight	Total weight of whold body	38.3	t	
	Counterweight	10	t	
Power	Engine model	WD415.18G (欧 II)		
	Engine rated power/roation speed	137/2000	kw/rpm	
	Engine max.torque	710/1100~1600	N.m/r/min	
Travel	Distance to ground	0.24	m	
	Travel speed	1.8/3.2	km/h	

■ Diagram of lifting heigh



■ Performance table

Amplitude (m)	11T counterweight with total track frame 360° operation													
	Boom length													
	10.2m		13.55m		16.9m		21.955m		26.95m		31.975m		37m	
	Up Angle(°)	Load weight (t)	Up Angle(°)	Load weight (t)	Up Angle(°)	Load weight (t)	Up Angle(°)	Load weight (t)	Up Angle(°)	Load weight	Up Angle(°)	Load weight	Up Angle(°)	Load weight
3.0	69.2	25000												
3.5	66.0	25000	72.3	21000										
4.0	62.3	24100	70.1	20000	74.2	17000								
4.5	59.5	21000	67.7	18000	72.4	16000	76.8	11500						
5.0	56.0	19000	65.4	16000	70.6	15000	75.2	11000						
5.5	52.3	17000	63.0	15000	68.7	14000	73.3	10400	76.9	8500				
6.0	48.5	15500	60.5	13500	66.9	12700	72.4	10000	75.3	8000				
6.5	44.3	13500	57.9	12000	65.0	12000	71.1	9500	74.7	7500	77.2	6000		
7.0	39.7	12000	55.3	11000	63.1	11000	69.7	9000	73.6	7000	76.3	5600		
8.0			49.3	10000	59.1	10000	66.3	8500	71.4	6500	74.4	5100	76.6	4000
9.0			43.6	8000	54.9	8100	63.9	7500	69.1	6000	72.5	4300	75.0	3600
10.0			36.6	6500	50.5	6500	60.9	6800	66.3	5600	70.6	4500	73.3	3200
11.0					45.3	5500	57.3	6000	64.4	5300	68.7	4200	71.7	3000
12.0					40.6	4500	54.6	5100	62.0	5000	66.7	3800	70.1	2800
13.0					34.7	3300	51.2	4300	59.5	4500	64.7	3600	68.4	2600
14.0							47.6	3700	56.0	4000	62.7	3300	66.7	2500
15.0							43.9	3100	54.3	3500	60.6	3000	65.0	2400
16.0							39.3	2500	51.6	3000	58.5	2800	63.2	2300
18.0									45.3	2200	54.2	2500	59.7	2000
20.0									39.3	1800	49.5	2000	56.0	1800
22.0											44.5	1500	52.1	1600
24.0											39.0	1000	43.0	1200
26.0													43.6	900
28.0													38.3	650
multiple	8		8		6		5		4		3		3	

- Note:
1. When boom length is 10.2m, the load for travel is 70% of rated load.
  2. When boom length reach 16.8, the load for travel is 50% of rated load.
  3. In other circumstance, travel with load or without load are prohibited.
  4. Ground should be plane and speed should be lower than gear-down when travel.
  5. Jib weight is not counted in boom hoist weight. If jib is equipped, jib weight should be reduced according to actual situation.

## Load weight table for fixed jib

Rated hoist weight		unit: kg		
boom+jib (m)		37+ 6.5 = 43.5 m		
Up angle for boom $\alpha^\circ$	Compensation angle for jib			
	0°		15°	
	Amplitude (m)	Load weight	Amplitude (m)	Load weight
80	6.2	2500	7.5	1800
75	10	2300	11.2	1500
70	13.6	2100	14.8	1300
65	17	1800	18.2	1100
60	20	1000	21.5	900
55	23.6	900	24.6	700
50	26.6	600	27.6	450
Hook weight		55.3kg		
Steel rope multiplier		1		

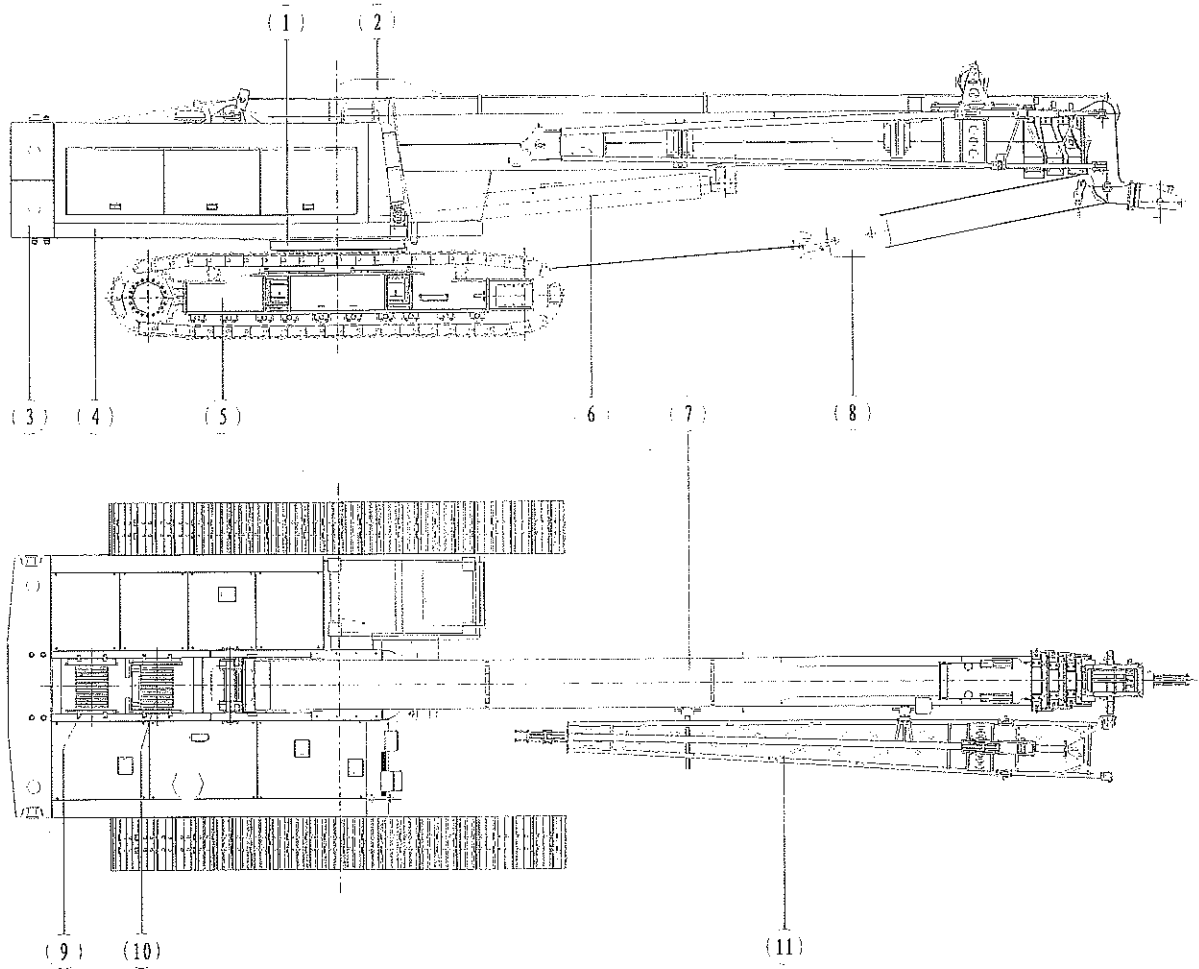
**Note:**When climbing, the boom should be right ahead and totally retracted.

### Attention items regarding performance table

- ⊙ Rated load weight is the value getting from plane and hard ground.
- ⊙ Rated weight listed above are maximum allowable load weight, which include sling, hook, and rope weight from boom end to hook.
- ⊙ Please be careful and never overload.
- ⊙ Use load weight according to the actual Amplitude.
- ⊙ Above table is not including winding twist of arm.

## ■ Construction and function

### Position and name of main parts



- |                              |                |
|------------------------------|----------------|
| 1. Swing support             | 7. Boom        |
| 2. Cab                       | 8. Main hook   |
| 3. Counterweight             | 9. Aux. winch  |
| 4. Turn table                | 10. Main winch |
| 5. Carriage with track       | 11. Jib        |
| 6. Luffing cylinder for boom |                |

### Outline dimension of products

