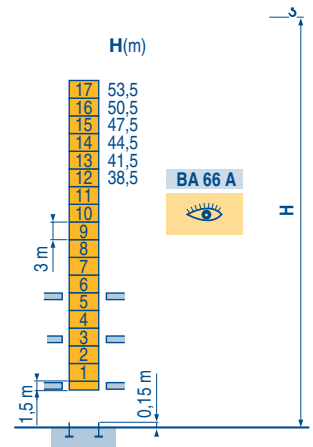
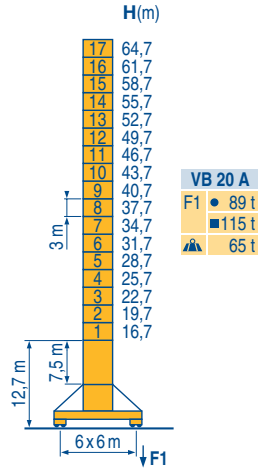
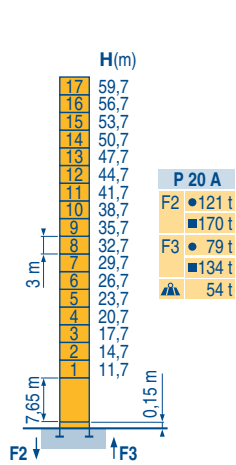




Masts / Reactions

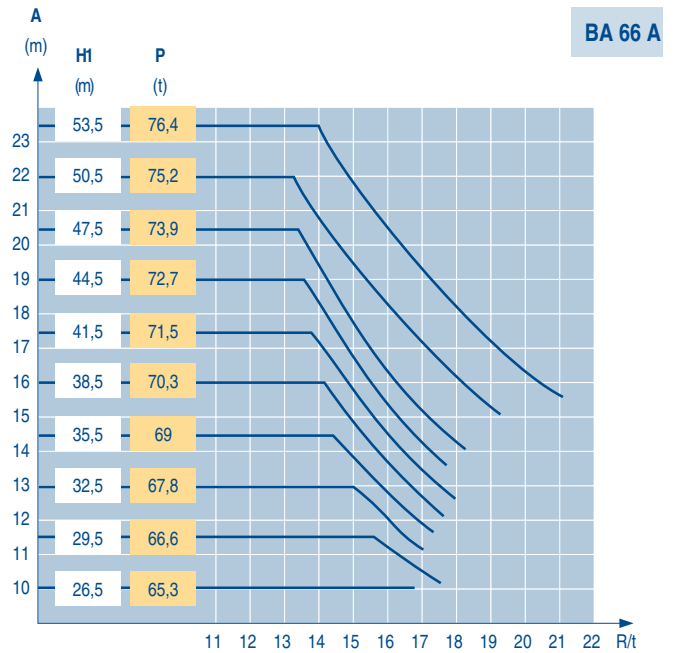
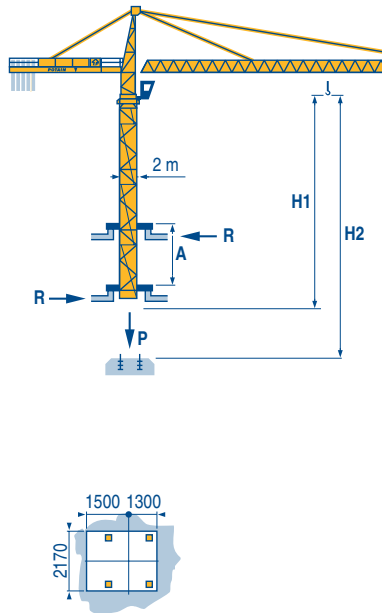
2 m  
30 m ⇒ 60 m

MBZ 1



Climbing crane

MBZ 1



CITY CRANE MC 205 B

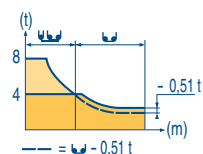
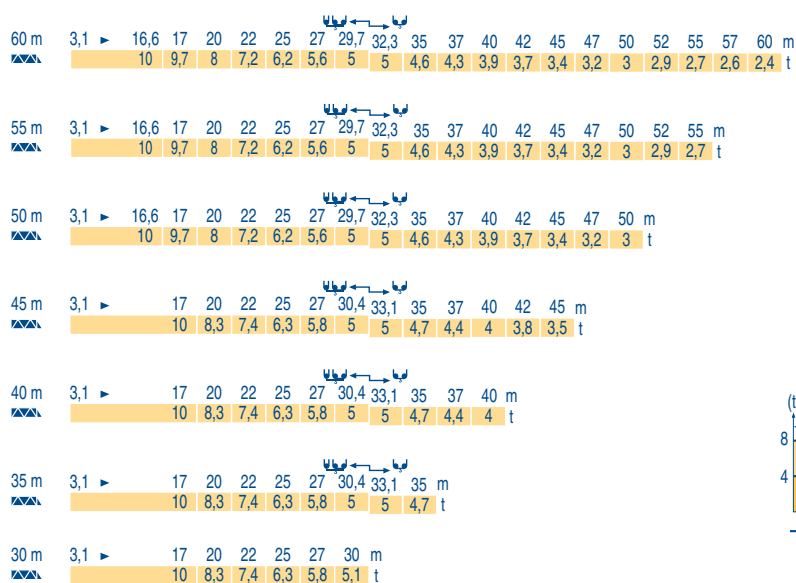


GB

- Reactions in service
- Reactions out of service
- Without load, ballast (or transport axles), with maximum jib and maximum height.
- See climbing crane

## Load diagrams

MBZ 1



## Counter-jib ballast

MBZ 1

Height (m)	Counter-jib length (m)	Ballast weight (kg)
60 m	14,5 m	18 600
55 m	14,5 m	15 800
50 m	14,5 m	14 400
45 m	12 m	17 200
40 m	12 m	14 400
35 m	12 m	13 000
30 m	12 m	11 000

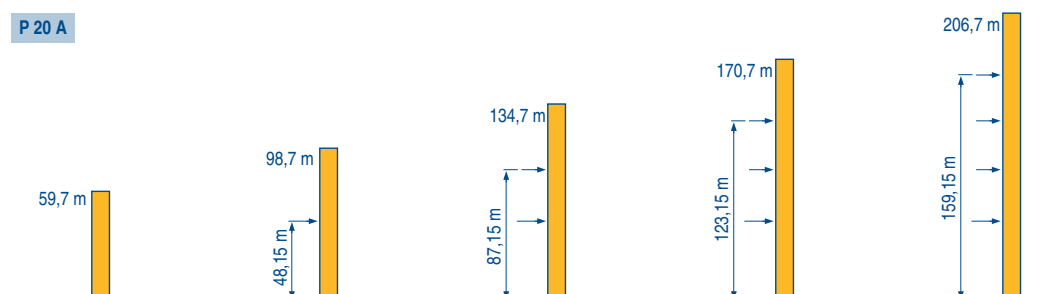
## Base ballast

MBZ 1

Crane height (m)	Base ballast weight (t)
2 m	108
VB 20 A	96
64,7	84
61,7	72
58,7	60
55,7	48
52,7	36
49,7	24
46,7	24
43,7	24
40,7	24
37,7	24
34,7	24
31,7	24
28,7	24
25,7	24
22,7	24
19,7	24
16,7	24
13,7	24

## Anchorage

MBZ 1



## CITY CRANE MC 205 B

**POTAIN**

**GB**

- A** Distance between collars
- H1** Crane height
- P** Crane weight (in service)
- R** Horizontal reaction

## Mechanisms

MBZ 1

						hp	kW		
	55 RCS 25	m/min	0 → 40	0 → 80	0 → 20	0 → 40	55	40,5	557 m
		t	5	2,5	10	5			
	5 D3 V4	m/min	15 - 30 - 58				5	3,7	
	RCV 145	rpm	0 → 0,8				2 x 6	2 x 4,4	
	VB 20 A RT 544 A1 2V R ≥ 13 m	m/min	13,5 → 27				4 x 7	4 x 5,2	
CEI 38	IEC 38	<b>kVA</b>							
400 V (+6% -10%) 50 Hz		55 RCS : 75kVA		2000/14					

GB

- Hoisting
- Trolleying
- Slewing
- Travelling
- In compliance with the EEC Instructions on noise level



This commercial document is not legally binding.  
For any technical information, please refer to the corresponding instructions.

**Manitowoc**  
Crane CARE

**Manitowoc**  
Crane Group



### Americas

Tel: +1 920 683 6322  
Tel: +1 717 597 8121

### Europe - Middle East - Africa

Tel : +(33) 4 72 81 50 00  
Tel : +(44) 191 565 6281

### Asia - Pacific

Tel: +(65) 6861 7133  
Fax: +(65) 6862 4142

www.manitowoccrane.com

**Manitowoc Crane Group Asia Pte Ltd**  
Manitowoc Crane Group  
26 Benoi Road  
Singapore 629898

Tel: 65-6861 7133  
Fax: (Admin/ Sales) : 65-6862 4040  
Fax: (Service/ Parts) : 65-6862 4142  
www.manitowoccrane.com

**CITY CRANE MC 205 B**

Réf. 2004 45 MBZ 1

Copyright.Reproduction interdite © POTAIN 2004

Réalisation Sedoc