



ROUGH TERRAIN CRANE

GR-800EX

80 METRIC TON CAPACITY

ROUGH TERRAIN CRANE

*The GR-800EX-2:
High Quality We Are Proud Of*



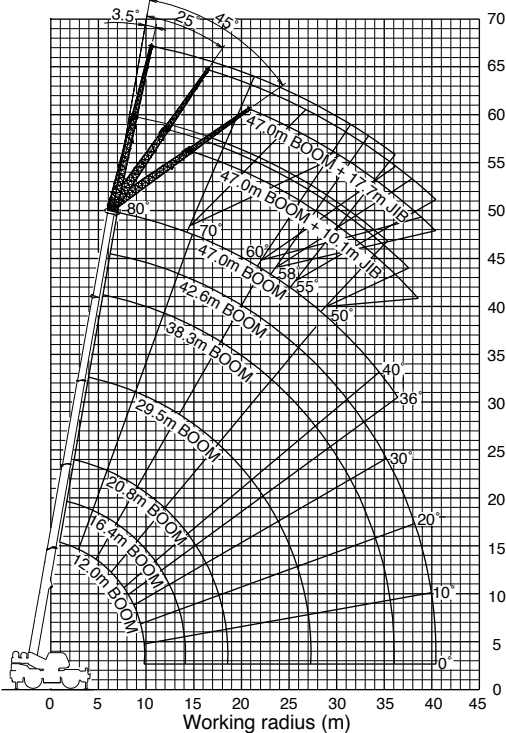
MODEL : GR-800EX

SPECIFICATIONS

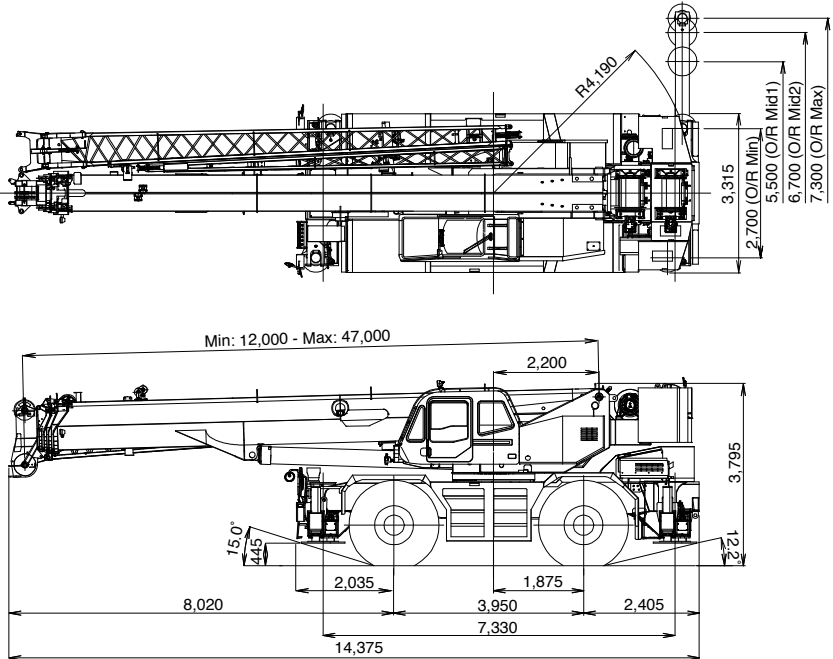
MAXIMUM CAPACITY	80,000 kg at 3.0 m
TRAVELING SPEED(MAX.)	36 km/h
GRADEABILITY (TAN θ)	94 % (at stall)
WEIGHT Gross vehicle mass	51,410 kg
-front axle	24,325 kg
-rear axle	27,085 kg
MIN.TURNING RADIUS	11.9 m (2-wheel steering) 6.7 m(4-wheel steering) (at center of extreme outer tire)
BOOM	5-section full length power telescoping boom.
Fully retracted length	12.0 m
Fully extended length	47.0 m
Extension speed	35.0 m in 160 s
Elevation speed	20° to 60° in 46 s
JIB	2-staged swingaround boom extension. Triple offset(3.5°/25°/45°) type. Assistant cylinders for mounting and stowing.
Length	10.1 m and 17.7 m
MAIN WINCH	Variable speed type with grooved drum driven by hydraulic axial piston motor.
Single line pull	64.7 kN {6,600 kgf}
Single line speed	149 m/min. (at the 4th layer)
Wire rope	19 mm (Diameter)
AUXILIARY WINCH	Variable speed type with grooved drum driven by hydraulic axial piston motor.
Single line pull	64.7 kN {6,600 kgf}
Single line speed	128 m/min. (at the 2nd layer)
Wire rope	19 mm (Diameter)
SWING speed	1.5 min ⁻¹ {rpm}
Tail swing radius	4,190 mm
HYDRAULIC SYSTEM	Pumps... 2 variable piston pumps for telescoping, elevating and winches. Tandem gear pump for steering, swing and optional equipment. Control valves.... Multiple valves actuated by pilot pressure with integral pressure relief valves. Circuit.... Equipped with air cooled type oil cooler. Oil pressure appears on AML display for main circuit. Hydraulic oil tank capacity.... approx. 840 liters

TADANO Automatic Moment Limiter (Model: AML-C)	Main unit in crane cab gives audible and visual warning of approach to overload. Automatically cuts out crane motions before overload. With working range (load radius and/or boom angle and/or tip height and/or swing range) limit function. Following functions are displayed. · Load as percentage · Number of parts of line of rope · Boom angle · Boom length · Load radius · Outriggers position · On-tire indicator · Actual hook load · Permissible load · Boom position indicator · Potential hook height · Swing angle · Main hydraulic oil pressure · Jib length and jib offset angle (only when jib operation)
OUTRIGGERS	4-hydraulically operated H-type outriggers. Each outrigger controlled simultaneously or independently from the crane cab. Equipped with extension width detector for each outrigger.
Extended width	Fully ... 7,300 mm, Middle ... 6,700 mm & 5,500 mm Minimum ... 2,700 mm, Float size (Diameter) ... 600 mm
CARRIER	Rear engine, left-hand steering, driving axle 2-way selected type (by manual switch). 4 x 2 front drive, 4 x 4 front and rear drive
ENGINE	Model..... MITSUBISHI 6M60-TL Type4 cycle, turbo charged and after cooled, 6 cylinder in line, direct injection, water cooled diesel engine. Piston displacement...7,545 cm ³ Max.output...200 kW at 2,600 min ⁻¹ {rpm} Max.torque ...785 N-m at 1,400 min ⁻¹ {rpm}
TRANSMISSION	Electronically controlled full automatic transmission.
STEERING	Hydraulic power steering controlled by steering wheel. 4 steering modes available: 2-wheel front, 2-wheel rear 4-wheel coordinated, 4-wheel crab
SUSPENSION	Front..... Rigid mounted to the frame. Rear..... Pivot mounted with hydraulic lockout cylinders.
TIRES	29.5 - 25 34PR(OR), Single x 4
FUEL TANK CAPACITY	300 liters

WORKING RANGE



DIMENSION



*Some specifications are subject to change



Lifting your dreams

TADANO LTD. (International Division)

4-12, Kamezawa 2-chome, Sumida-ku Tokyo 130-0014, Japan

Tel:81-3-3621-7750 Fax:81-3-3621-7785

http://www.tadano.co.jp/indexe.html E-mail:tdnihq@tadano.co.jp

