



SRC865C

Rough Terrain Crane



KEY FEATURES

- With a power rating of 275hp, the T4F U.S. Cummins engine features both power and economy.
- The load sensing, constant horsepower piston pump combined with an electronic proportional controlled main control valve system provides smooth, powerful functionality. The dynamic swing brake system features accurate control and excellent inching performance.
- The load moment indicator system consists of a third wrap sensor, length and angle sensors, lift cylinder pressure sensors, and a real-time display of crane operating parameters. The system provides a real-time display with overload warning, cutout and programmable height limiter to guarantee safety and reliability.

Lifting Capacity

65UST/10 ft

Max Boom Length

43.5 m - 143 ft

Max Lifting Moment

2,030 kN-m 1,497 ft-kips

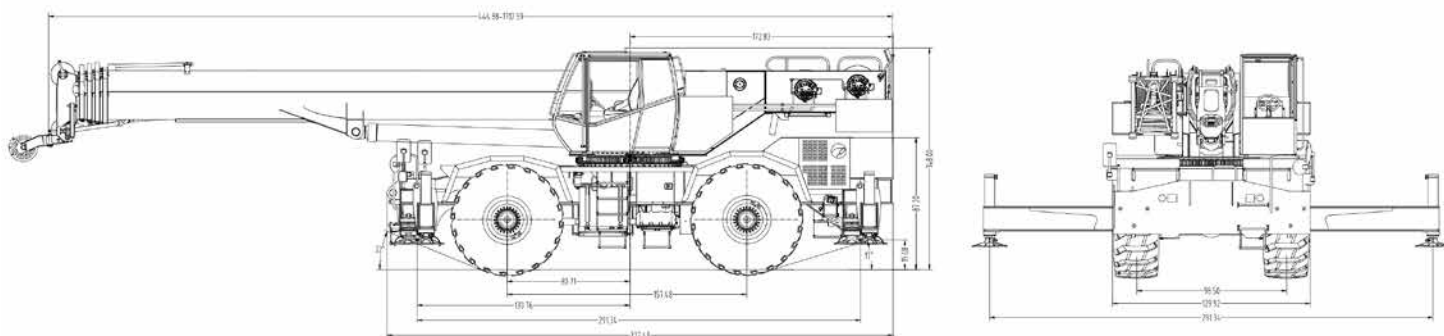
Max Grade Ability

75%

Engine emission

T4F

SRC865C Dimensions & Specifications



MACHINE PARAMETERS

	Standard	Metric
Outrigger span (center to center)	24.3 ft	7400 mm
Engine model	Cummins QSB6.7	
Rated power of engine	275 hp/2500 rpm	205 kw/2500 rpm
Rated torque of engine	730 lb-ft/1500 rpm	990 N.m/1500 rpm
Emission standard	T4F	
Max. traveling speed	24.9 mph	40 km/h
Overall mass	98,988 lb	44,900 kg
Front axle load	54,675 lb	24,800 kg
Rear axle load	44,313 lb	20,100 kg
Min. turning radius (2 wheels/4 wheels)	40.4 ft/22.0 ft	12.3 m/6.7 m
Min. ground clearance	1.1 ft	500 mm
Approach angle	23°	
Departure angle	17°	
Braking distance (12 mph)	21.3 ft	6.5 m
Fuel consumption	3.6 mpg	65 L/100 km
Max. lifting speed of single rope of main winch (empty load)	492 ft/min	150 m/min
Max. lifting speed of single rope of auxiliary winch (empty load)	492 ft/min	150 m/min
Full extension/retraction time of boom	120 sec/130 sec	
Luffing time of boom	75 sec/55 sec	
Max. slewing speed	2.0 rpm	
Full extension/retraction time of outrigger	35 sec/30 sec	
Fully lifting/descending time of outrigger	40 sec/35 sec	
Maximum rated lifting capacity	65 T	59 mt
Minimum rated reach	10 ft	3.05 m

SANY America Inc.

318 Cooper Circle | Peachtree City, GA 30269
T: 678-251-2810 | F: 770-632-7820

www.sanyamerica.com

