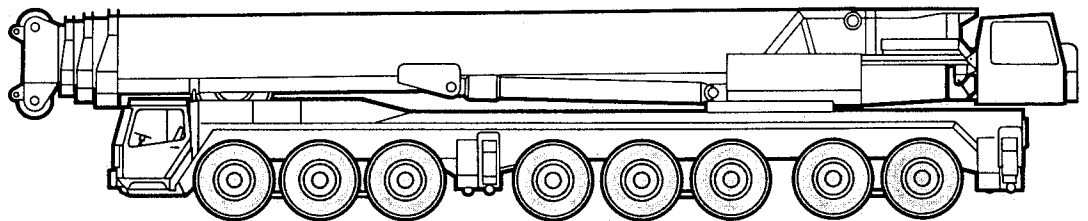


Technical Data
Caractéristiques techniques

LTM 1400

Mobile Crane
Grue automotrice



WERRER

Lifting capacities at telescopic boom. Forces de levage à la flèche télescopique.

LTM 1400



52 ft - 164 ft



360°



276000 lbs



85%

ft	52 ft	70 ft	86 ft	89 ft	104 ft	120 ft	138 ft	154 ft	164 ft	ft			
10	956	839								10			
11	867	780								11			
12	794	729								12			
13	735	685								13			
14	702	653								14			
15	672	626	601							15			
16	642	606	580							16			
17	613	582	558	381						17			
18	583	557	537	369						18			
19	565	535	519	358						19			
20	547	515	502	434	348	371				20			
22	510	478	468	408	329	350				22			
24	475	445	437	384	312	330	290	239	252	219	24		
26	443	414	407	362	297	311	275	228	242	210	26		
28	415	389	382	343	284	295	262	219	232	202	189	28	
30	390	366	359	324	271	279	249	209	223	195	184	30	
32	368	345	339	307	258	266	238	200	215	188	177	32	
34	349	328	321	292	248	253	228	192	207	182	171	34	
36	331	312	305	279	239	242	218	184	200	176	165	36	
38	314	295	289	267	229	231	208	177	192	170	158	38	
40			274	255	220	220	198	170	185	164	153	40	
45			246	230	200	198	178	155	167	150	141	45	
50			220	207	184	180	162	143	151	138	128	50	
55			196	188	170	164	148	132	137	127	117	55	
60				172	159	150	137	122	126	118	108	60	
65				158	147	138	127	113	118	110	100	65	
70				143	137	128	117	106	109	103	92.5	70	
75					128	119	108	98.5	101	95.5	86	75	
80						111	101	92.5	95.5	89	80.5	80	
85						104	94	87.5	88.5	84	75.5	85	
90							97.5	88	82.5	82.5	79	71	90
95								83	78	78	74.5	67	95
100								78	74	73.5	70.5	63	100
105								74	71.5	69.5	66	59.3	105
110								64	67	66.5	62.5	56.1	110
115										63	59.2	53	115
120										59.3	56	50.2	120
125											53.2	47.7	125
130											50.1	45.3	130
135											47.2	43.1	135
140												40.9	140
145												38.8	145
150												36.9	150
I	0	50	92	0	92	92	0	92	92	100	I		
II	0	0	0	50	50	92	92	92	92	100	II		
III	0	0	0	50	0	0	92	50	92	100	III		

TAB 78044

Remarks referring to load charts.

1. The tabulated lifting capacities do not exceed 85 % of the tipping load.
2. The crane's structural steelwork is in accordance with DIN 15018, part 3. Design and construction of the crane comply with DIN 15018, part 2, and with F. E. M. regulations.
3. The 85 % overturning limit values take into account wind force 5 = wind speed 20 mph.
4. Lifting capacities are given in kips.
5. The weight of the hook blocks and hooks must be deducted from the lifting capacities.
6. Working radii are measured from the slewing centreline.
7. The lifting capacities given for the telescopic boom only apply if the folding jib is taken off.
8. Lifting capacities are subject to modifications.

Remarques relatives aux tableaux des charges.

1. Les forces de levage indiquées ne dépassent 85 % de la charge de basculement.
2. La norme DIN 15018, 3ème partie est appliquée pour les charpentes. La construction de la grue est réalisée conformément à la norme DIN 15018, 2ème partie, et aux règles de la F. E. M.
3. A 85 % de la charge de basculement, il a été tenu compte d'un vent de force 5 = vitesse de vent 20 mph.
4. Les forces de levage sont données en kips.
5. Le poids des moufles et crochets doit être soustrait des charges indiquées.
6. Les portées sont calculées à partir de l'axe de rotation.
7. Les forces indiquées pour la flèche télescopique s'entendent fléchette déployable déposée.
8. Les forces de levage sont modifiables sans préavis.

Lifting capacities are given

Lifting capacities at telescopic boom. Forces de levage à la flèche télescopique.

LTM 1400



52 ft – 164 ft



360°



209000 lbs



85%

ft	52 ft		70 ft	86 ft	89 ft	104 ft	120 ft		138 ft	154 ft	164 ft	ft	
	I	II											
10	956	839										10	
11	867	780										11	
12	794	729										12	
13	735	685										13	
14	695	643										14	
15	657	604	590									15	
16	621	577	565									16	
17	592	552	542		381							17	
18	568	528	519		369							18	
19	545	508	499		358							19	
20	523	488	480	434	348	371						20	
22	484	453	445	408	329	350						22	
24	449	422	413	384	312	330	290	239	252	219		24	
26	418	394	385	362	297	311	275	228	242	210		26	
28	392	369	361	343	284	295	262	219	232	202	189	28	
30	368	346	339	324	271	279	249	209	223	195	184	30	
32	346	326	319	305	258	266	238	200	215	188	177	32	
34	326	307	300	289	248	253	228	192	207	182	171	34	
36	307	291	283	275	239	242	218	184	200	176	165	36	
38	288	274	266	261	229	231	208	177	192	170	158	38	
40			250	248	220	220	198	170	185	164	153	40	
45			221	219	200	198	178	155	167	150	141	45	
50			196	192	184	180	162	143	151	138	128	50	
55			171	168	170	164	148	132	137	127	117	55	
60				146	159	149	137	122	126	118	108	60	
65				128	147	134	127	113	118	110	100	65	
70					115	134	121	117	106	109	103	92.5	70
75						120	108	106	98.5	101	95.5	86	75
80							96.5	96	92.5	95.5	89	80.5	80
85							86.5	87.5	87.5	88.5	84	75.5	85
90							78	79	82.5	82	79	71	90
95								72	78	75	74.5	67	95
100								65.5	74	69	70	63	100
105								59.7	71.5	64	64.5	59.3	105
110								54.9	67	58.7	60	56.1	110
115										54.1	55.6	53	115
120										50	51.5	50.2	120
125											47.6	47.6	125
130											44.3	44.4	130
135											41.3	41.4	135
140												38.5	140
145												35.9	145
150												33.5	150
ft	I	0	50	92	0	92	92	0	92	92	100	I	
	II	0	0	0	50	50	92	92	92	92	100	II	
	% III	0	0	0	50	0	0	92	50	92	100	III %	

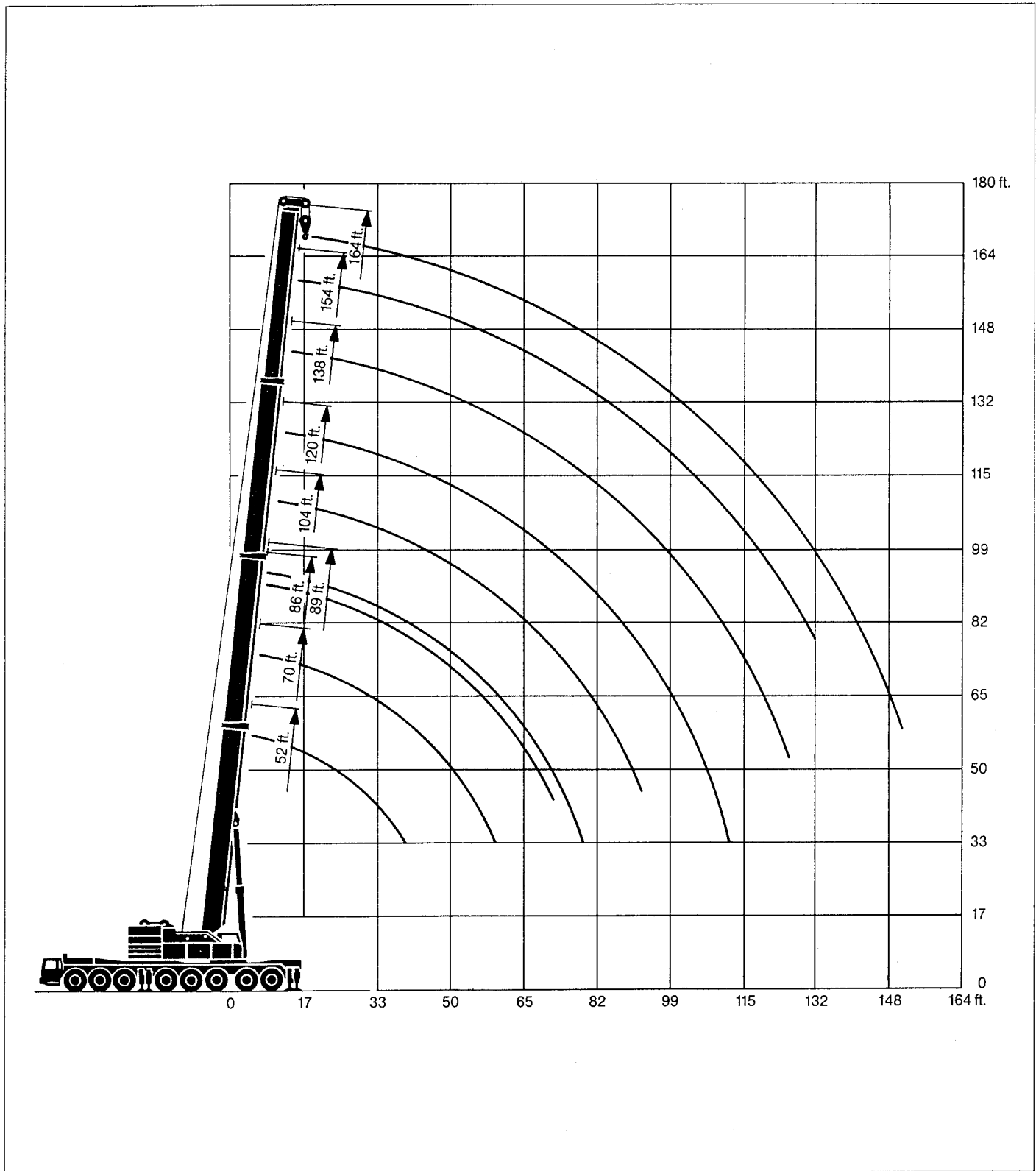
¹⁾ over rear / en arrière

TAB 78033

Lifting heights. Hauteurs de levage.

LTM 1400

Telescopic boom.
Flèche télescopique.



Lifting capacities at guyed telescopic boom. Forces de levage à la flèche télescopique haubanée.

LTM 1400



86 ft - 164 ft






360°



276000 lbs

85%

 ft	86 ft	89 ft	104 ft	120 ft		138 ft	154 ft	164 ft	 ft
20	464	353	386						20
22	446	353	376						22
24	423	349	366	296	218	252	212		24
26	398	341	356	292	216	249	210		26
28	378	332	344	285	215	246	206	186	28
30	359	323	332	278	213	242	202	184	30
32	339	310	317	270	211	239	200	180	32
34	321	298	303	261	207	234	196	177	34
36	305	288	289	252	204	226	192	174	36
38	289	278	276	242	201	219	188	172	38
40	274	268	264	234	197	212	184	169	40
45	244	245	238	215	189	195	172	160	45
50	218	225	217	199	176	181	160	151	50
55	195	207	197	184	164	168	149	142	55
60	175	189	178	169	153	157	140	135	60
65	159	172	161	156	144	145	131	125	65
70	143	158	147	146	134	134	123	118	70
75		140	134	134	125	125	116	111	75
80			123	124	117	117	111	104	80
85			113	115	111	111	103	97.5	85
90			100	105	105	98.5	98	91.5	90
95				96.5	100	92.5	92.5	86	95
100				89	95.5	86	88	81.5	100
105				81.5	91.5	80	84	77	105
110				63.5	75.5	75	78.5	73	110
115						69	75	69.5	115
120							71	66	120
125							67	63.5	125
130							63	60.5	130
135							59.2	58.1	135
140								55.4	140
145								51.9	145
150								43.8	150
 %	I 92	0	92	92	0	92	92	100	I
	II 0	50	50	92	92	92	92	100	II
	III 0	50	0	0	92	50	50	100	III

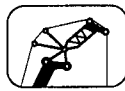
TAB 78051

Lifting capacities at the luffing lattice jib. Forces de levage à la flèche treillis relevable.

LTM 1400



84°
52 ft / 86 ft



69 ft - 276 ft



360°



209000 lbs



85%

ft	52 ft										86 ft										ft		
	69 ft	92 ft	115 ft	138 ft	161 ft	184 ft	207 ft	230 ft	253 ft	276 ft	69 ft	92 ft	115 ft	138 ft	161 ft	184 ft	207 ft	230 ft	253 ft	276 ft			
34	239																					34	
36	232																					36	
38	226																					38	
40	221	202									202											40	
45	209	195									197											45	
50	202	187	152								191	160										50	
55	195	180	148	121							184	157	127									55	
60	186	172	145	117	93.5						176	154	129	99								60	
65	166	160	142	115	92.5						161	152	144	97								65	
70	147	150	137	113	91	77.5					150	143	129	95.5	73							70	
75		140	131	111	90	76.5	62.5				134	120	94.5	72	57.3							75	
80		130	123	108	89	76	61.5	48.5			125	117	93.5	70	57.3	48.5						80	
85		122	113	106	87	75	61.5	48.5			117	113	91.5	68.5	57.3	48.5						85	
90		113	108	103	83	75	61	48.5	38.1		111	106	90.5	67	57.3	48.5	38.6					90	
95			102	97	80	74.5	60	48	37.6	28.7		104	100	88	65	57.3	48.5	38.1	30			95	
100			95	91	77	73	59.5	47.4	37.1	28.1			94.5	83.5	63.5	56.8	48.5	37.5	29.7	21.7		100	
105			88	86	74	69.5	59.5	47.4	36.6	27.8			89.5	78.5	61.5	55.1	48.5	37.5	29.3	21.2		105	
110			83	81	71	67	57.8	47.4	36.1	27.4			83.5	75	59.2	53.4	46.8	37.5	28.8	20.8		110	
115				77	68	64.5	57.3	46.8	35.6	27.1			79.5	71	57.3	52.3	45.1	36.9	28.4	20.5		115	
120				73	65	62	56.4	46.3	35.1	26.8				67	55.6	51.2	43.8	36.4	28	20.2		120	
125				68	62.5	60.5	53.9	46.3	34.6	26.4				64	53.9	49.6	42.9	36.3	27.5	19.8		125	
130				65	59.3	57.1	52.2	46.3	34.1	26.1				61.5	52.2	48.7	42.1	35.5	27.2	19.7		130	
135					56.5	54.6	50.5	45.7	33.5	25.8					50.2	47.2	41.3	34.6	26.8	19.4		135	
140					54	52.5	48.9	44.8	32.9	25.6					48.1	45.6	40.4	33.8	26.4	19		140	
150					49	47.9	45.5	42.7	31.7	25					44.9	42.7	38.7	32.6	25.6	18.6		150	
160						43.5	42.4	40.4	30.6	24.3						40.4	37.1	31.8	25	18.2		160	
170						40.9	39.8	38.7	29.6	23.6						38.7	35.4	30.9	24.3	17.9		170	
180							38.1	37	28.4	23						36.2	32.9	29.3	23.6	17.5		180	
190								35.9	34.8	27.4	22.3						31.4	28.1	23.1	17.2		190	
200									32.5	26.4	21.6							27.3	22.5	16.8		200	
210									30.9	25.4	20.7								26.5	21.8	16.3		210
220									29.2	24.5	20.1								25.6	21	16		220
230										23.4	19.3									20.4	15.6		230
240											18.5									19.9	15.3		240
250											17.8										15		250
260											17.1										14.6		260

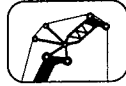
Lengths of telescopic boom including 10 ft luffing lattice jib adapter.
Longueurs de la flèche télescopique avec 10 ft raccord pour flèche treillis relevable.

TAB 78118.1

Les forces de levage sont données



84°
120 ft / 154 ft



69 ft - 276 ft



360°



209000 lbs



85%

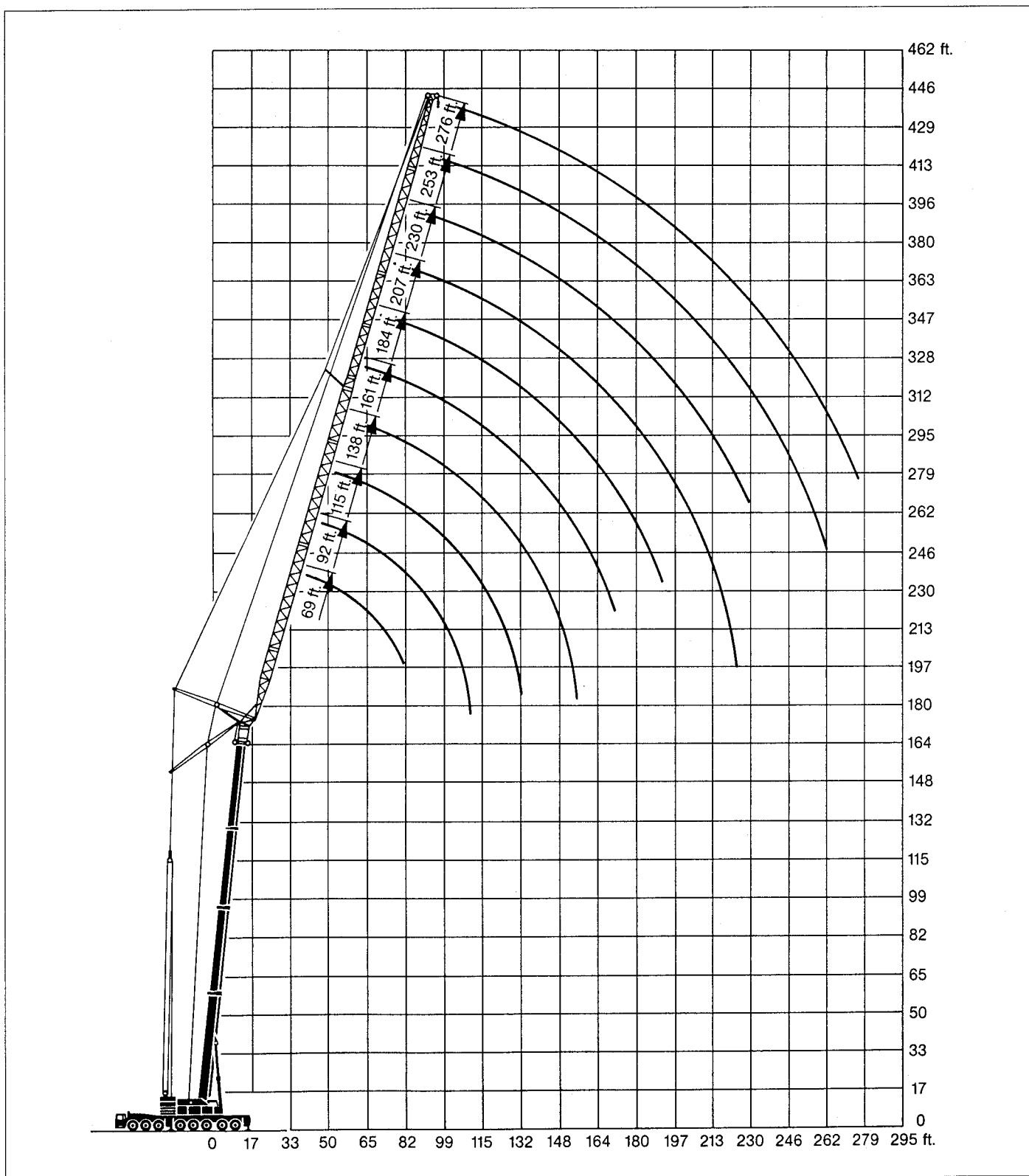
ft	120 ft										154 ft										ft			
	69 ft	92 ft	115 ft	138 ft	161 ft	184 ft	207 ft	230 ft	253 ft	276 ft	69 ft	92 ft	115 ft	138 ft	161 ft	184 ft	207 ft	230 ft	253 ft	276 ft				
50	124																						50	
55	123	103									77												55	
60	120	101	84.5								77	65											60	
65	116	99.5	82								75	65											65	
70	114	98.5	81	66.5							75	64.5	52.9										70	
75	113	97.5	80	65.5	52.9						74	63.5	52.4	40.8									75	
80		96.5	79	65	52.7	41.9					73	63	51.8	40.8	32.6								80	
85		94	78.5	64	51.9	41.9					73	63	51.8	40.8	32.6								85	
90		92	77.5	63	51.8	41.9	33.1					63	51	40	31.8	23.9							90	
95		90.5	76	63	51.3	41.4	33.1	26.5				62.5	50.7	39.7	31.5	23.7	19.3						95	
100		88.5	74.5	62.5	50.7	40.8	33.1	26.5	20.5			61.5	50.7	39.7	31.5	23.6	19.2	14.6					100	
105			73	60.5	50.7	40.8	33.1	26.5	20.3	14.6		60.5	50.7	39.7	31.5	23.6	19.2	14.6					105	
110				70	58.9	49.9	40.8	32.2	26.5	20.1	14.2		60.5	49.9	38.8	31.5	23.4	19	14.4				110	
115				68.5	57.8	49	40.2	32	26.5	20	14			49.6	38.6	31.5	23.4	19	14.2	9.7			115	
120				66.5	56.7	47.6	39.4	32	26.5	19.8	13.9			49.3	38.6	31.1	23.3	18.8	14.1	9.6			120	
125					55	45.1	38.5	32	26.5	19.8	13.9			48.5	38.6	30.2	23.1	18.5	13.9	9.5			125	
130						53.3	44.3	37.7	32	26.5	19.7	13.7			48.5	38.6	30.2	23	18.5	13.9	9.5		130	
135						52.3	43.5	37.2	31.8	26.5	19.6	13.6				38.3	30.2	22.9	18.5	13.8	9.5		135	
140						51.4	42.6	36.7	31.7	26.5	19.5	13.5				37.8	30.2	22.8	18.4	13.6	9.5		140	
150							40.9	35.4	31	26	19.2	13.4				37.5	29.7	22.6	18.2	13.4	9.3		150	
160								33.8	30	25.4	18.9	13.2					29.1	22.4	18	13.2	9		160	
170								32.1	29.2	25.4	18.5	13					29.1	22.3	17.9	13	9		170	
180								31.2	28.2	25.4	18.4	12.9						22.1	17.7	12.9	8.9	4.9	180	
190									27.3	25.4	18.2	12.8						21.9	17.5	12.8	8.8	4.9	190	
200										26.4	25.1	18	12.7							17.4	12.7	8.8	4.9	200
210											24.3	17.9	12.6							17.2	12.6	8.8	4.9	210
220											24.3	17.7	12.6							17	12.4	8.7	4.9	220
230												17.4	12.5								12.2	8.6	4.9	230
240												17.1	12.4									8.6	4.9	240
250													12.3									8.6	4.9	250
260													12.2									8.4	4.9	260
270													12.1									8.4	4.9	270

Lengths of telescopic boom including 10 ft luffing lattice jib adapter.
Longueurs de la flèche télescopique avec 10 ft raccord pour fléchette relevable.

Lifting heights. Hauteurs de levage.

LTM 1400

Luffing lattice jib.
Fléchette treillis relevable.



Lifting capacities at the lattice fly jib. Forces de levage à la flèche treillis fixe.

LTM 1400



138 ft* - 164 ft**



0°
39 ft - 200 ft



360°



209000lbs

85%

ft	138 ft*	154 ft*	154 ft**								164 ft**	ft
	39 ft	39 ft	39 ft	62 ft	85 ft	108 ft	131 ft	154 ft	177 ft	200 ft	200 ft	
34	109	101										34
36	106	99.5										36
38	103	98										38
40	101	96.5	87.5									40
45	96.5	93	83.5									45
50	92	89	79.5	63.5								50
55	87	85.5	75.5	60.5	47.4							55
60	83	82	72	58	45.3	35.8	28.9					60
65	79	77.5	68	55.4	43.4	34.2	27.5					65
70	75.5	74	64.5	52.9	41.6	32.6	26.5	21.4				70
75	72.5	71.5	61.5	50.5	39.9	31.1	25.3	20.3	15.3	11		75
80	69.5	68.5	58.8	48.2	38.4	29.7	24	19.2	14.4	10.2	9.8	80
85	66.5	65.5	56	46.2	36.9	28.5	22.8	18.4	13.7	9.7	9.3	85
90	64	62.5	53.6	44.2	35.4	27.3	21.9	17.4	12.9	9.2	8.8	90
95	62	59.6	51.3	42.3	34	26.3	21	16.6	12.1	8.6	8.3	95
100	59.9	56.8	49.1	40.5	32.6	25.2	20.1	15.8	11.5	8.1	7.8	100
105	57.5	53.8	47	38.8	31.1	24	19.4	15	11	7.7	7.5	105
110	55	51.3	45.1	37.1	29.9	23	18.6	14.3	10.4	7.4	7.2	110
115	52.5	48.6	43.3	35.6	28.9	22.2	17.7	13.5	9.8	7	6.8	115
120	49.9	46.1	41.3	34.2	27.8	21.6	16.9	12.8	9.4	6.7	6.5	120
125	47.2	43.7	39.1	33	26.6	20.9	16.3	12.3	9	6.4	6.1	125
130	44.4	41.7	37.3	31.6	25.8	20.1	15.6	11.8	8.7	6	5.6	130
135	41.5	39.7	35.6	30.4	24.9	19.3	15.1	11.4	8.2	5.7	5.3	135
140	38.8	37.8	33.9	29.4	24.1	18.7	14.6	11	7.8	5.4	5	140
145	36.3	35.9	32.3	28.5	23.3	18.2	14	10.3	7.5	5.1	4.8	145
150	33.9	33.5	31.1	27.5	22.4	17.4	13.5	10	7.1	4.9	4.7	150
155	31.6	31.4	29.6	26.7	21.7	16.8	12.9	9.7	6.9	4.7	4.5	155
160	29.3	29.5	28.3	25.6	21	16.3	12.4	9.3	6.7			160
165	27.2	27.6	27	24.3	20.2	15.7	12.1	9	6.4			165
170	25.4	25.6	25.3	23.3	19.5	15.1	11.7	8.6	6.2			170
175		23.9	23.8	22.2	18.9	14.6	11.3	8.3	5.9			175
180		22.2	22.3	21.1	18.3	14	10.9	8	5.5			180
190			19.4	19.1	17.2	13	10.3	7.4	5.1			190
200				17.2	16.1	12.1	9.8	6.9	4.7			200
210				15	14.8	11.5	9.3	6.4	4.4			210
220				12.8	13.3	10.6	8.8	5.9	4.1			220
230					11.6	9.9	8.1	5.5	3.6			230
240					10	9.1	7.5	5.2				240
250						8.1	7	4.8				250
260						6.7	6.5	4.5				260
270							5.9	4.2				270

* with 5 ft boom extension / avec 5 ft extension de flèche

** with 29 ft boom extension / avec 29 ft extension de flèche

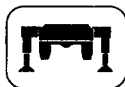
TAB 78034



138 ft**
- 164 ft**



20°
39 ft - 154 ft



360°



209000lbs

85%

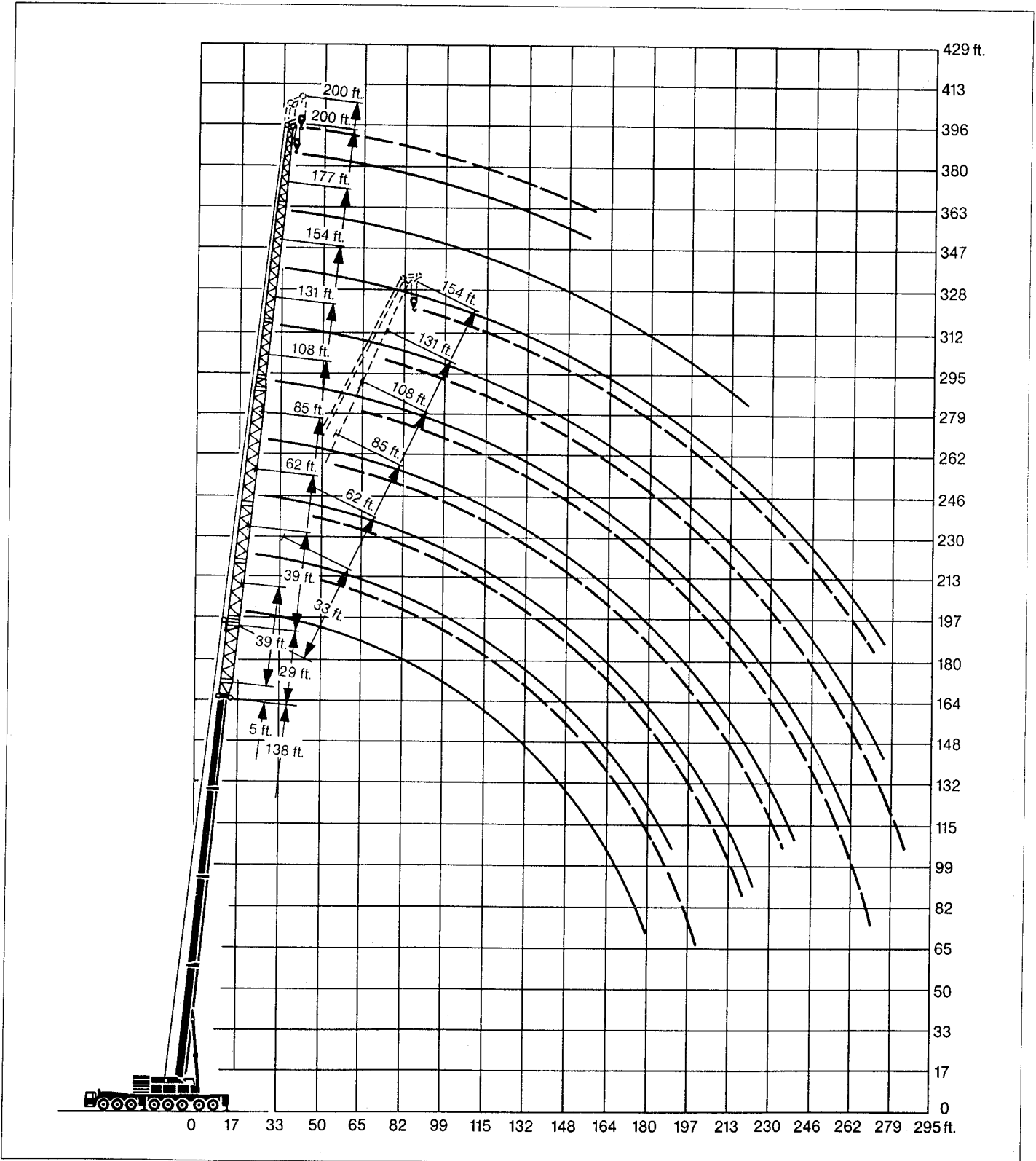
ft	138 ft**	154 ft**						164 ft**	ft
	39 ft	39 ft	62 ft	85 ft	108 ft	131 ft	154 ft	154 ft	
55	62								55
60	60.5	57.9							60
65	58.4	56.2							65
70	56.7	54.5	40.1						70
75	55.1	52.8	38.9						75
80	53.3	51.3	37.8	27.8					80
85	51.5	49.9	36.7	27					85
90	49.6	48.3	35.8	26.3					90
95	47.8	46.5	34.9	25.5	19				95
100	46	44.7	33.9	24.7	18.3				100
105	44.5	43	32.9	24	17.6	12.1			105
110	43.2	41.3	31.7	23.5	17.1	12			110
115	41.8	39.9	30.6	22.9	16.6	11.7			115
120	40.5	38.5	29.7	22.3	16.1	11.3	8.5		120
125	39.2	37.2	28.8	21.8	15.4	11	8.1	7.7	125
130	38	36	28.2	21.3	14.9	10.5	7.8	7.5	130
135	36.8	34.8	27.2	20.7	14.5	10.1	7.6	5.4	135
140	35.6	33.7	26.4	20.1	14.3	9.8	7.4	5.2	140
145	34.5	32.7	25.7	19.8	14.3	9.5	7.3	7	145
150	33.5	31.3	24.9	19.3	14	9.3	7.1	6.7	150
155	32.3	29.9	24.1	18.8	13.6	9.1	6.8	6.5	155
160	30.8	28.4	23.4	18.3	13.2	8.9	6.5	6.3	160
165	29	27.1	22.6	17.8	12.7	8.5	6.4	6.1	165
170	27.1	25.9	22.1	17.3	12.4	8.2	6.2	5.8	170
175	25.3	24.7	21.6	16.8	12.2	8	6	5.6	175
180	23.4	23.4	21.1	16.4	12	7.8	5.7	5.4	180
190		20.6	19.8	15.6	11.6	7.5	5.3	5.1	190
200		17.6	18.2	14.8	11.1	7.2	5	4.7	200
210			16.3	14.1	10.6	6.8	4.6	4.4	210
220			14	13.3	10.3	6.7	4.3	4.1	220
230				12.4	9.8	6.5	4.1	3.9	230
240				11.2	9.3	6.3	3.9	3.6	240
250					8.8	5.9	3.7	3.3	250
260					8.3	5.6	3.4	3.1	260
270					7.9	5.4	3.2		270
280					7.1	5.2			280

** with 29 ft boom extension / avec 29 ft extension de flèche.

Lifting heights. Hauteurs de levage.

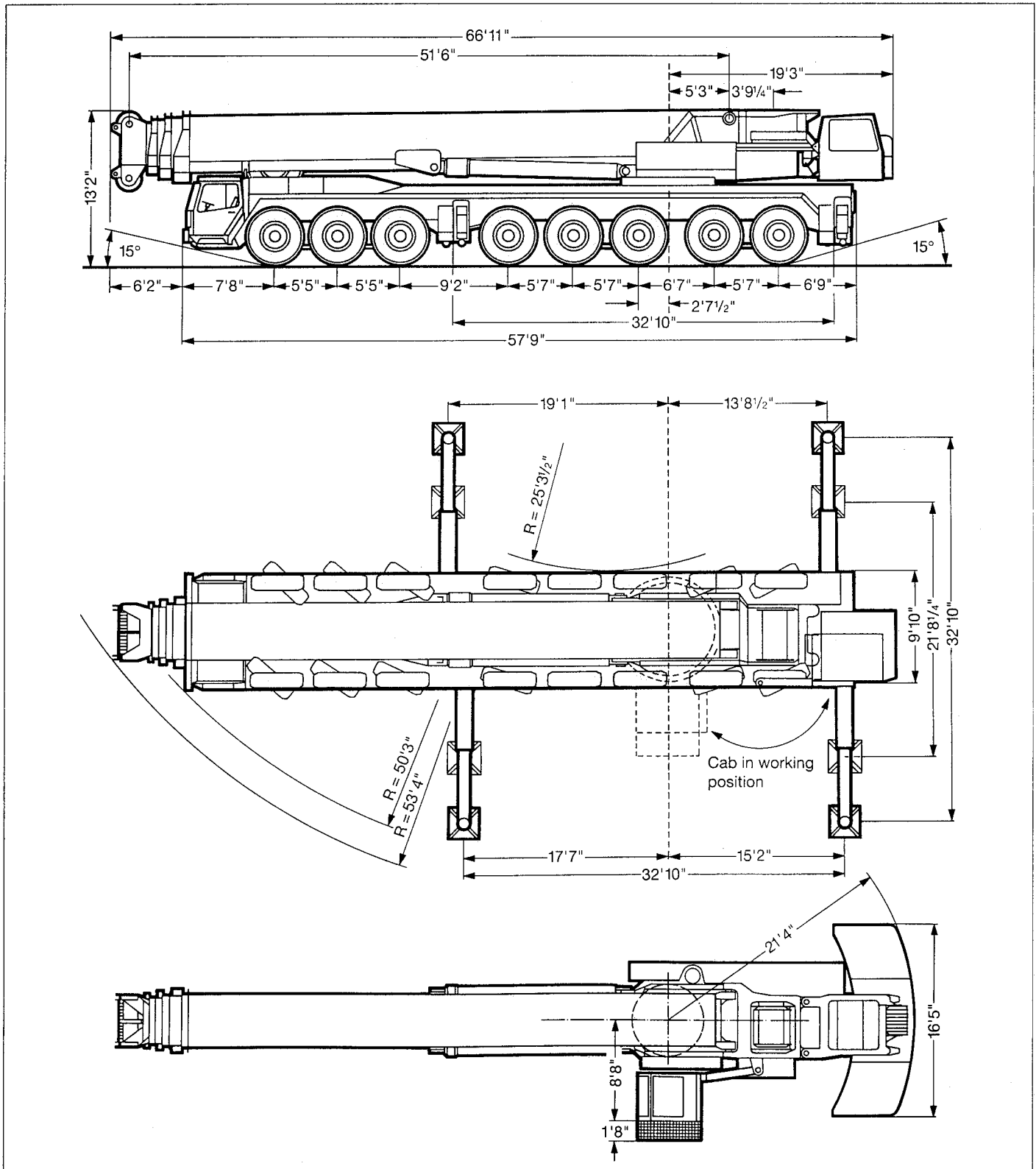
LTM 1400

Lattice fly jib.
Fléchette treillis fixe.



Dimensions. Encombrement.

LTM 1400



Weights. Poids.

LTM 1400

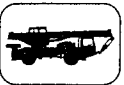







Axle Essieu	1	2	3	4	5	6	7	8	Total weight Poids total
lbs	26500	26500	26500	26500	26500	26500	26500	26500	212000








Load (kips) Forces de levage (kips)	No. of sheaves Poulies	No. of lines Brins	Weight lbs Poids lbs
507	11	22	5732
341.7	7	14	4409
178.6	3	7	3307
79.4	1	3	2205
26.5	-	1	1102

Working speeds. Vitesses.



	1	2	3	4	5	R	
 mph	8	13	22.4	29.8	40.4	8.5	16 %
 mph 	3.7	6.2	9.9	14.3	19.3	4.1	31 %
	16.00 R 25						



Drive Mécanismes	infinitely variable en continu	Rope diameter / Rope length Diamètre du câble / Longueur du câble	Max. single line pull Effort au brin maxi.
	0 - 526 ft/min single line ft/mn au brin simple	$6\frac{3}{8}$ " / 1575'	26900 lbs
	0 - 526 ft/min single line ft/mn au brin simple	$6\frac{3}{8}$ " / 2460'	26900 lbs
	0 - 1,2 rpm		
	approx. 100 seconds to reach 83° boom angle env. 100 s jusqu'à 83°		
	approx. 130 seconds / 350 seconds for boom extension from 52 ft - 164 ft env. 130 s / 350 s pour passer de 52 ft - 164 ft		

Truck chassis.

LTM 1400

Frame:	Liebherr designed and manufactured, box type, torsion resistant, all-welded construction made of high-tensile structural steel.
Outriggers:	4 sliding beams with hydraulic extension cylinders and hydraulic support pad jacks. Front outriggers mounted between axles 3 and 4, rear outriggers at rear of truck chassis.
Engine:	Diesel, 12 cylinder, watercooled, make Daimler-Benz, type OM 444 A, output 390 kW DIN (530 HP) at 2100 rpm, max. torque 1815 lbs-ft at 1300 rpm. Fuel tank capacity: 162 gallons.
Transmission:	Allison type CLBT 755 automatic transmission with torque converter and hydrodynamic retarder brake. 5 forward speeds, 1 reverse. Splitter gearbox with differential and differential lock, off-road range.
Axles:	Heavy duty crane truck axles, all 8 axles sprung. Axles 1 to 4 and 7 and 8 steered. Axles 1, 2, 5 and 6 are planetary axles with differential locks.
Suspension:	All axles are hydropneumatically sprung with automatic levelling. Load equalization between axle pairs 1 + 2, 3 + 4, 5 + 6 and 7 + 8. Suspension hydraulically locked.
Tyres:	16 tyres, all axles with single tyres. Tyre size: 16.00 R 25.
Steering:	ZF semi-unitary hydraulic power steering, dual circuit system, with hydraulic servo mechanism and auxiliary pump circuit from final drive.
Brakes:	Service brake: servo assisted air brakes acting on all wheels, dual circuit system. Hand brake: spring-action, acting on all wheels of axles 5 to 8.
Driver's cab:	Large-area, all-steel cab with resilient mountings, safety glass windows and full range of instruments.
Electrical system:	24 Volts DC, 2 batteries, lighting to German road vehicle regulations.

Crane superstructure.

Frame:	Liebherr-made, torsion-resistant, welded construction made of high-tensile structural steel. Connection to truck chassis by triple roller slewing ring, designed for 360° continuous rotation.
Crane engine:	Diesel, 6 cylinder, watercooled, make Daimler-Benz, type OM 447 LA, output 263 kW DIN (359 HP) at 1800 rpm, max. torque 1122 lbs-ft at 1300 rpm.
Crane drive:	Diesel-hydraulic, with 5 axial piston swivelling pumps with servo control and automatic output regulation.
Crane control:	By self-centering control lever, movable in 4 directions (cross-control arrangement).
Main winch:	Axial piston motor, full hydraulic power up and down. Hoist drum with integrated planetary gear and spring loaded brake.
Luffing gear:	Twin double-acting hydraulic cylinders with integral safety locking valves.
Slewing gear:	Planetary gear with flange connected hydraulic motor and spring loaded brake.
Crane cab:	All-steel construction, safety glazing, controls and instruments. Crane cab is swing to rear when driving on road.
Safety devices:	Electronic load-moment limiter, hoist limit switch, safety valves to protect hydraulic system against pipe and hose fracture.
Telescopic boom:	1 boom pivot section and 3 telescopic sections. All sections separate hydraulically extendable. Boom length: 52 ft – 164 ft.
Electrical system:	24 Volts DC, 2 batteries.

Additional equipment.

Lattice jibs:	Luffing lattice jib 69 ft – 276 ft, lattice fly jib 39 ft – 200 ft.
Hoisting gear 2:	For two-hook operation or to luff the lattice fly jib.

Other items of equipment available on request.