

ALL TERRAIN CRANE

ZAT1500

PRODUCT MANUALS

Zoomlion Lifting Machinery Company

ZOOMLION

A large, modern truck-mounted crane (ZAT1500) is shown from a front-three-quarter perspective. The truck is white with a prominent yellow crane boom and jib. The crane's counterweight is also yellow and features a black and yellow chevron safety pattern. The truck's front grille and hood prominently display the 'ZOOMLION' brand name. The background is a dramatic, overcast sky with dark, heavy clouds. The overall scene is set on what appears to be a construction site or a paved area.

CONTENTS

ZAT1500 Lifting capacity	01 / 02
ZAT1500 Technical data	03 / 04
ZAT1500 Overall view / Lifting height chart	03 / 04
ZAT1500 Rated lifting capacity table	05 / 14
ZAT1500 Lifting height chart	15 / 16





72

Max. jibbing height of main boom

87

Max. lifting height of jib

7.8x8.43

Outrigger spread (W x L)



ZAT1500

Lifting capacity

- This high-tech product, combining mechanical, electrical and hydraulic systems as a whole, has so many advantages, such as good control performance, excellent micro-positioning performance, great lifting capacity and super lifting height, that it is active in various fields.
- The 5-axle (3 axles driven and all axles steered) full-width special purpose chassis is manufactured by Zoomlion, providing wide vision, spacious cab and luxurious decoration.
- The latest electro-hydraulic proportional directional control valve with load sensing function, multiple plunger variable pumps and open / closed variable system ensure that each executive mechanism makes full use of its work capability.
- The safety devices, such as relief valve, balance valve, hydraulic lock and brake valve, etc. in the hydraulic system, are against rupture of pipes and hoses.



Item		Value	Remarks	
Working performance	Max. rated lifting capacity	kg	150000	At 3 m radius
	Max. load moment of basic boom	kN.m	4704	At 6 m radius
	Max. load moment of main boom (fully extended)	kN.m	1505	At 32 m radius
	Max. lifting height of basic boom	m	13.0	
	Max. lifting height of main boom	m	72	
	Max. lifting height of jib	m	87/(95)	The parameters do not include deflection of main boom and jib. The value in the brackets is the value with the extension installed.
Working speeds	Max. hoist rope speed (Main winch)	m/min.	114	
	Max. hoist rope speed (Auxiliary winch)	m/min.	74	At the 4 th layer
	Boom derricking up time	s	94	At the 3 rd layer
	Boom extending time	s	860	
	Max. slewing speed	r/min.	1.4	
	Driving	Max. height above sea level	m	2000
Max. driving speed		km/h	75	
Max. gradeability		%	40	
Min. turning diameter		m	≤ 20	
Min. ground clearance		mm	305	
Limits for exhaust pollutants and smoke			Conform to related standards	GB3847-2005/GB17691-2005 (National Stage IV)
Fuel consumption per hundred kilometers		L	76	
Deadweight in driving condition		kg	60000	
Mass	Complete vehicle kerb mass	kg	59805	
	Load on axles 1, 2 and 3	kg	12000	
	Load on axles 4 and 5	kg	12000	
	Overall dimensions (L × W × H)	mm	15390 × 3000 × 4000	
	Outrigger spread (L)	m	8.43	
	Outrigger spread (W)	m	7.8(fully extended), 5.3(intermediately extended)	
	Main boom length	m	13.5 – 72	
	Boom angle	°	-0.5 – 82	
Dimension	Jib length	m	11, 18.6	
	Jib + extension length	m	26.6	
	Offset	°	0, 30	

Table 1 Main boom

Unit: Metric tons

Outriggers fully extended, with 45 tons counterweight, over full range																		
Radius (m)	Boom length (m)																	
	13.5	18	22.5	27	31.5	36	40.5	45	49.5	54	58.5	63	67.5	72				
3	150*	100*	90															
3.5	105*	95*	87	75														
4	100*	90	83	75														
4.5	96*	85	78	75	60													
5	92*	80	73	70	58													
5.5	86	75	68	65	55	45												
6	80	70	63	60	52	45												
7	67	65	58	55	49	45	35											
8	58	58	53	50	46	43	33											
9	50	50	50	47	43	41	30.5	28										
10		44	44	44	40	38	29	28										
11		39	39	39	37.5	35.5	27.5	26	23									
12		35	35	35	35	33	26	24	21.5	19								
14			29	29.5	32.5	29	23.5	21.4	19	17	15							
16			23	23.6	24.6	25	21.5	19.2	17.2	15.4	13.5	12						
18				19.6	20.4	21	19.5	17	15.6	13.9	12.5	11	9					
20					16.4	17.2	18	17.6	15.2	14	12.6	11.5	10.1	8.2	7			
22						14.5	15	15.4	13.8	12.4	11.3	10.5	9.3	7.6	6.5			
24						12.4	13	13.6	12.4	11.2	10.2	9.5	8.5	7.1	6.1			
26							11.2	11.8	11	10.2	9.2	8.6	7.8	6.6	5.7			
28							9.8	10.4	9.8	9.4	8.4	7.9	7.2	6.2	5.4			
30								9.2	8.6	8.6	7.6	7.2	6.7	5.8	5.1			
32								8.2	7.6	7.6	7	6.5	6.2	5.4	4.8			
34									6.7	6.7	6.4	5.9	5.7	5	4.5			
36									5.9	5.9	5.8	5.4	5.2	4.7	4.2			
38										5.2	5.2	5	4.7	4.4	3.9			
40										4.6	4.6	4.6	4.4	4.1	3.7			
42											4.0	4.2	4.1	3.8	3.5			
44												3.5	3.7	3.9	3.6	3.2		
46													3.3	3.6	3.4	3		
48														2.9	3.2	3.2	2.8	
50															2.8	2.9	2.6	
52															2.4	2.6	2.4	
54																2.3	2.2	
56																2.1	2	
58																	1.8	
60																	1.6	
Reeving	14	14	12	10	8	6	5	4	3	3	2	2	2	2	2	2	2	
Hook	90 tons				55 tons				25 tons									
Telescoping mode	I	1	1	1	2	2	2	2	3	3	3	3	3	3	3	4		
	II	1	2	2	2	2	2	2	2	3	3	3	3	3	3	4		
	III	1	1	2	2	2	2	2	2	3	3	3	3	3	3	4		
	IV	1	1	1	1	2	2	2	2	2	2	3	3	3	3	4		
	V	1	1	1	1	1	2	2	2	2	2	2	3	3	3	4		
	VI	1	1	1	1	1	2	2	2	2	2	2	2	3	3	4		

Note: The data indicated with an asterisk (*) are suitable for 110 tons hook. (The data "150" is the nominal lifting capacity.)

Table 2 Main boom

Unit: Metric tons

Outriggers fully extended, with 32 tons counterweight, over full range																					
Radius (m)	Boom length (m)																				
	13.5	18	22.5	27	31.5	36	40.5	45	49.5	54	58.5	63	67.5	72							
3	110*	100*	90																		
3.5	105*	95*	87	75																	
4	100*	90	83	75																	
4.5	94*	85	78	75	60																
5	88	80	73	70	58																
5.5	82	75	68	65	55	45															
6	76	70	63	60	52	45															
7	62	61	58	55	49	45	35														
8	53	53	53	50	46	43	33														
9	46	46	46	46	43	41	30.5	28													
10		40	40	40	40	38	29	28													
11		35	35	35	36	35.5	27.5	26	23												
12		31	31	30.5	31	32	26	24	21.5	19											
14			24	23.5	24	25	23.5	21.4	19	17	15										
16				19	18.5	19	20	21	19.2	17.2	15.4	13.5	12								
18					15	15.5	16	17	16.5	15.6	13.9	12.5	11	9							
20						12	13	13.5	14.5	13.8	13.8	12.6	11.5	10.1	8.2	7					
22							10.5	11	12	11.5	11.5	11.3	10.5	9.3	7.6	6.5					
24								9	9.5	10.5	10	10	9.5	8.5	7.1	6.1					
26									8.2	9	8.5	8.5	8.6	8.6	7.8	6.6	5.7				
28										7.2	8	7.4	7.4	7.5	7.8	7.2	6.2	5.4			
30											6.8	6.3	6.3	6.4	6.7	6.7	5.8	5.1			
32												6	5.4	5.4	5.5	5.8	6.1	5.4	4.8		
34													4.6	4.6	4.7	5	5.3	5	4.5		
36														3.9	3.9	4	4.3	4.6	4.6	4.2	
38															3.3	3.4	3.7	4	4.2	3.9	
40																2.7	2.9	3.2	3.5	3.8	3.7
42																	2.4	2.7	3	3.4	3.4
44																	1.9	2.2	2.5	2.9	3
46																		1.8	2.1	2.4	2.5
48																		1.4	1.7	2.1	2.2
50																			1.4	1.7	1.8
52																				1.4	1.5
54																				1.1	1.2
Reeving	14	14	12	10	8	6	5	4	3	3	2	2	2	2	2	2	2	2	2	2	2
Hook	90 tons				55 tons				25 tons												
Telescoping mode	I	1	1	1	2	2	2	2	3	3	3	3	3	3	3	4					
	II	1	2	2	2	2	2	2	2	3	3	3	3	3	3	4					
	III	1	1	2	2	2	2	2	2	3	3	3	3	3	3	4					
	IV	1	1	1	1	2	2	2	2	2	2	3	3	3	3	4					
	V	1	1	1	1	1	2	2	2	2	2	2	3	3	3	4					
	VI	1	1	1	1	1	2	2	2	2	2	2	2	3	3	4					

Note: The data indicated with an asterisk (*) are suitable for 110 tons hook.

Table 3 Main boom

Unit: Metric tons

Outriggers fully extended, with 24 tons counterweight, over full range															
Radius (m)	Boom length (m)														
	13.5	18	22.5	27	31.5	36	40.5	45	49.5	54	58.5	63	67.5	72	
3	110*	100*	90												
3.5	105*	95*	87	75											
4	100*	90	83	75											
4.5	91*	85	78	75	60										
5	84	80	73	70	58										
5.5	78	75	68	65	55	45									
6	71	70	63	60	52	45									
7	57	56	56	55	49	45	35								
8	48	48	48	47	46	43	33								
9	41	41	41	41	42	41	30.5	28							
10		35	36	36	36.5	37.5	29	28							
11		30	31	30	30.5	32	27.5	26	23						
12		26	27	26	26.5	27.5	25.8	24	21.5	19					
14			20.5	19.5	20	21.5	22	21.2	19	17	15				
16			16	15	15.5	17	17.5	17	17	15.4	13.5	12			
18			12	12.5	13.5	14.3	13.8	13.6	13.8	12.5	11	9			
20			9.5	10.5	11	12	11	11	11.2	11.5	10.1	8.2	7		
22				8.5	9.3	10	9.4	9.4	9.6	10	9.3	7.6	6.5		
24				7	7.8	8.5	8	8	8.2	8.5	8.5	7.1	6.1		
26					6.6	7.3	6.7	6.7	6.9	7.2	7.5	6.6	5.7		
28					5.5	6.2	5.7	5.7	5.9	6.2	6.5	6.1	5.4		
30						5.3	4.8	4.8	4.9	5.2	5.5	5.6	5.1		
32						4.5	4	4	4.1	4.4	4.7	5.1	4.8		
34							3.3	3.3	3.4	3.7	4.1	4.5	4.5		
36							2.6	2.6	2.7	3	3.4	3.8	3.8		
38								2.1	2.2	2.5	2.9	3.3	3.3		
40								1.6	1.7	2	2.4	2.8	2.8		
42									1.2	1.5	1.9	2.3	2.3		
44									1.1	1.5	1.9	1.9			
46										1.1	1.5	1.5			
48												1.2	1.2		
Reeving	14	14	12	10	8	6	5	4	3	3	2	2	2	2	
Hook	90 tons				55 tons				25 tons						
Telescoping mode	I	1	1	1	2	2	2	2	3	3	3	3	3	4	
	II	1	2	2	2	2	2	2	2	3	3	3	3	4	
	III	1	1	2	2	2	2	2	2	3	3	3	3	4	
	IV	1	1	1	1	2	2	2	2	2	3	3	3	4	
	V	1	1	1	1	1	2	2	2	2	2	3	3	4	
	VI	1	1	1	1	1	1	2	2	2	2	2	3	4	

Note: The data indicated with an asterisk (*) are suitable for 110 tons hook.

Table 4 Main boom

Unit: Metric tons

Outriggers fully extended, with 10 tons counterweight, over full range															
Radius (m)	Boom length (m)														
	13.5	18	22.5	27	31.5	36	40.5	45	49.5	54	58.5	63	67.5	72	
3	110*	100*	90												
3.5	105*	95*	87	75											
4	96*	90	83	75											
4.5	86	85	78	75	60										
5	78	77	73	70	58										
5.5	69	68	68	65	55	45									
6	61	60	61	60	52	45									
7	49	49	50	49	47	44	35								
8	40	40	40	40	40	40	33								
9	31	31	32	31	32	33	30	27							
10		25	26	25	26	27	28	26							
11		21	22	21	22	23	24	23	22						
12		18	18.5	18	18.5	19	20	19	18	18					
14			13.5	13	13.5	14	15	14	14	14	14				
16			10.3	9.8	10.5	11	11.5	11	11	11	11	10			
18				7.3	8	8.5	9	9	9	9	9	9	7		
20				5.4	6.2	7	7.5	7.2	7.2	7.2	7.5	8	6	6	
22					4.7	5.4	6.2	5.6	5.6	5.7	6	6.3	5.5	5.5	
24					3.5	4.2	4.9	4.3	4.3	4.4	4.7	5	5	5	
26						3.2	3.9	3.3	3.3	3.4	3.7	4	4.5	4.5	
28						2.4	3.1	2.5	2.5	2.7	3	3.3	3.7	3.7	
30							2.4	1.8	1.8	2	2.2	2.5	3	3	
32							1.7	1.1	1.1	1.3	1.5	1.9	2.3	2.3	
34												1.4	1.8	1.8	
36													1.3	1.3	
Reeving	14	14	12	10	8	6	5	4	3	3	2	2	2	2	
Hook	90 tons				55 tons				25 tons						
Telescoping mode	I	1	1	1	2	2	2	2	3	3	3	3	3	4	
	II	1	2	2	2	2	2	2	2	3	3	3	3	4	
	III	1	1	2	2	2	2	2	2	3	3	3	3	4	
	IV	1	1	1	1	2	2	2	2	2	3	3	3	4	
	V	1	1	1	1	1	2	2	2	2	2	3	3	4	
	VI	1	1	1	1	1	1	2	2	2	2	2	3	4	

Note: The data indicated with an asterisk (*) are suitable for 110 tons hook.

Table 5 Main boom

Unit: Metric tons

Outriggers fully extended, without counterweight, over full range															
Radius (m)	Boom length (m)														
	13.5	18	22.5	27	31.5	36	40.5	45	49.5	54	58.5	63	67.5	72	
3	105*	100*	90												
3.5	98*	95*	87	75											
4	90	90	83	75											
4.5	78	78	78	75	60										
5	69	69	69	68	58										
5.5	60	60	60	60	55	45									
6	52	52	52	52	48	45									
7	39	39	40	39	39	40	34								
8	29	29	30	29	30	31	31								
9	22	22	22	21.5	22	23	25	23							
10		18	18	17.5	18	19	20	19							
11		14.5	15	14	15	16	17	16	16						
12		11.5	12	11	12	13	14	13	13	13					
14			8.5	7.5	8.5	9.2	10	9.5	9.5	9.5	10				
16			6	5	6	6.5	7.2	6.6	6.6	6.8	7	7			
18				3.2	4	4.5	5.2	4.6	4.6	4.8	5	5	5		
20				1.8	2.6	3.5	4.2	3.6	3.6	3.8	4	4	4	4	
22					1.5	2.3	3	2.4	2.4	2.6	2.8	2.8	3.5	3.5	
24						1.3	2.2	1.4	1.4	1.6	1.8	1.8	2.6	2.6	
26							1.3				1.1	1.1	1.9	1.9	
28													1.2	1.2	
Reeving	14	14	12	10	8	6	5	3	3	2	2	2	2	2	
Telescoping mode	Hook	90 tons				55 tons				25 tons					
	I	1	1	1	2	2	2	2	3	3	3	3	3	3	4
	II	1	2	2	2	2	2	2	2	3	3	3	3	3	4
	III	1	1	2	2	2	2	2	2	2	3	3	3	3	4
	IV	1	1	1	1	2	2	2	2	2	2	3	3	3	4
	VI	1	1	1	1	1	2	2	2	2	2	2	3	3	4

Note: The data indicated with an asterisk (*) are suitable for 110 tons hook.

Table 6 Main boom

Unit: Metric tons

Outriggers intermediately extended, with 45 tons counterweight, over full range																						
Radius (m)	Boom length (m)																					
	13.5	18	22.5	27	31.5	36	40.5	45	49.5	54	58.5	63	67.5	72								
3	110*	100*	90																			
3.5	104*	95*	87	75																		
4	96*	90	83	75																		
4.5	88	85	78	75	60																	
5	82	80	73	70	58																	
5.5	76	75	68	65	55	45																
6	71	71	63	60	52	45																
7	58	58	56	56	49	45	35															
8	50	50	50	50	45	43	33															
9	42	40	40	40	41	40	30.5	28														
10		35	35	35	35	35	29	28														
11		30	30	29.5	29.5	30.5	27.5	26	23													
12		26	26	26	26	26.5	25.5	24	21.5	19												
14			20	19.5	20	21	21	20.5	19	17	15											
16			16	15.5	15.5	16.5	17.5	16.5	16	15.4	13.5	12										
18				12.5	12.5	13.5	14.5	14	14	13.5	12.5	11	9									
20					10.5	11	11.5	12	11.5	11.5	11.7	11.4	10.1	8.2	7							
22						9	9.5	10	9.6	9.6	9.7	9.5	9.3	7.6	6.5							
24							7.5	8	8.8	8.4	8.2	8.3	8.5	8.4	7.1	6.1						
26								7	7.7	7.2	7	7.2	7.4	7.4	6.6	5.7						
28									6	6.7	6.2	6	6.1	6.4	6.6	6.1	5.4					
30										5.5	5.1	5	5.1	5.4	5.8	5.6	5.1					
32											5	4.4	4.3	4.4	4.7	5.1	5.4	4.7				
34												3.5	3.4	3.6	3.9	4.3	4.6	4.6				
36													2.9	2.8	3.0	3.3	3.7	4.1	4.1			
38														2.3	2.5	2.8	3.1	3.5	3.5			
40															1.8	2.0	2.3	2.6	3.0	3.0		
42																1.5	1.9	2.1	2.5	2.5		
44																	1.4	1.7	2.0	2.0		
46																		1.4	1.7	1.7		
48																			1.4	1.4		
Reeving	14	14	12	10	8	6	5	4	3	3	2	2	2	2	2	2	2	2	2	2		
Telescoping mode	Hook	90 tons				55 tons				25 tons												
	I	1	1	1	2	2	2	2	2	3	3	3	3	3	3	3	3	3	3	3	4	
	II	1	2	2	2	2	2	2	2	2	3	3	3	3	3	3	3	3	3	3	4	
	III	1	1	2	2	2	2	2	2	2	2	3	3	3	3	3	3	3	3	3	4	
	IV	1	1	1	1	2	2	2	2	2	2	2	2	2	2	2	2	2	2	3	3	4
	VI	1	1	1	1	1	2	2	2	2	2	2	2	2	2	2	2	2	2	2	3	4

Note: The data indicated with an asterisk (*) are suitable for 110 tons hook.

Table 7 Main boom

Unit: Metric tons

Outriggers intermediately extended, with 32 tons counterweight, over full range																
Radius (m)	Boom length (m)															
	13.5	18	22.5	27	31.5	36	40.5	45	49.5	54	58.5	63	67.5	72		
3	110*	100*	90													
3.5	102*	95*	87	75												
4	93*	90	83	75												
4.5	84	84	78	75	60											
5	77	77	73	70	58											
5.5	72	72	68	65	55	45										
6	63	63	63	60	52	45										
7	51	51	51	52	48	45	35									
8	42	42	43	42	43	43	33									
9	34	34	35	34	35	36	30.5	28								
10		28	29	28	29	30	28.5	28								
11		24	25	24	25	26	26.5	26	23							
12		20	21	20	21	22	23	22.5	21.5	19						
14			16	15.2	16	17	18	17.5	17	15						
16			12.5	11.7	12.5	13.5	14.3	13.8	13.8	14	13.5	12				
18				9.2	10	11	11.4	10.8	10.8	11	11.3	11	9			
20				7.4	8.2	9	9.5	9	9	9.2	9.5	9.8	8.2	7		
22					6.5	7.3	8	7.3	7.3	7.5	7.7	8.2	7.4	6.5		
24					5.3	6	6.6	6.1	6.1	6.3	6.5	7	6.6	6		
26						5	5.5	5	5	5.2	5.5	5.8	5.8	5.5		
28						4	4.6	4.1	4.1	4.3	4.5	4.8	5	5		
30							3.8	3.3	3.3	3.5	3.7	4.1	4.5	4.5		
32								3.1	2.6	2.6	2.8	3	3.3	3.7	3.7	
34									1.9	1.9	2.1	2.3	2.6	3	3	
36									1.4	1.4	1.6	1.8	2.1	2.5	2.5	
38											1.1	1.3	1.6	2	2	
40													1.2	1.6	1.6	
42														1.2	1.2	
Reeving	14	14	12	10	8	6	5	4	3	3	2	2	2	2	2	
Telescoping mode	Hook	90 tons				55 tons				25 tons						
	I	1	1	1	2	2	2	2	3	3	3	3	3	3	3	4
	II	1	2	2	2	2	2	2	2	3	3	3	3	3	3	4
	III	1	1	2	2	2	2	2	2	2	3	3	3	3	3	4
	IV	1	1	1	1	2	2	2	2	2	2	3	3	3	3	4
	V	1	1	1	1	1	2	2	2	2	2	2	3	3	3	4
	VI	1	1	1	1	1	1	2	2	2	2	2	2	3	3	4

Note: The data indicated with an asterisk (*) are suitable for 110 tons hook.

Table 8 Main boom

Unit: Metric tons

Outriggers intermediately extended, with 24 tons counterweight, over full range																	
Radius (m)	Boom length (m)																
	13.5	18	22.5	27	31.5	36	40.5	45	49.5	54	58.5	63	67.5	72			
3	110*	100*	90														
3.5	101*	95*	87	75													
4	92*	90	83	75													
4.5	83	83	78	75	60												
5	75	75	73	70	58												
5.5	67	67	66	65	55	45											
6	58	58	58	57	52	45											
7	45	45	45	44	44	44	35										
8	35	35	36	35	35	36	33										
9	28	28	29	28	29	30	30	28									
10		23	24	23	24	25	26	25									
11		19.5	20	19	20	21	22	21	20								
12		16.5	17	16	17	17.5	18	18	18	16							
14			13	12	12.5	13	13.5	13.5	13	13							
16			10	9.3	10	10.5	11.2	10.9	10.9	11	11	11					
18				7	7.6	8.4	9.2	8.6	8.6	8.7	9	9	8.5				
20					5.3	6	6.6	7.4	6.9	6.9	7	7.3	7.5	7.5	7		
22						4.6	5.3	6	5.5	5.4	5.5	5.8	6	6.5	6		
24							3.5	4.2	5	4.4	4.3	4.4	4.7	5	5.5	5	
26								3.2	4	3.4	3.3	3.5	3.8	4.1	4.5	4.2	
28								2.4	3.2	2.6	2.5	2.7	3	3.3	3.7	3.7	
30									2.4	1.9	1.8	2	2.3	2.6	3	3	
32									1.8	1.3	1.2	1.4	1.7	2	2.4	2.4	
34												1.1	1.4	1.8	1.8		
36															1.4	1.4	
Reeving	14	14	12	10	8	6	5	4	3	3	2	2	2	2	2	2	
Telescoping mode	Hook	90 tons				55 tons				25 tons							
	I	1	1	1	2	2	2	2	2	2	2	2	2	2	2	2	2
	II	1	2	2	2	2	2	2	2	2	2	2	2	2	2	2	2
	III	1	1	2	2	2	2	2	2	2	2	2	2	2	2	2	2
	IV	1	1	1	1	2	2	2	2	2	2	2	2	2	2	2	2
	V	1	1	1	1	1	2	2	2	2	2	2	2	2	2	2	2
	VI	1	1	1	1	1	1	2	2	2	2	2	2	2	2	2	2

Note: The data indicated with an asterisk (*) are suitable for 110 tons hook.

Table 9 Main boom

Unit: Metric tons

Outriggers intermediately extended, with 10 tons counterweight, over full range															
Radius (m)	Boom length (m)														
	13.5	18	22.5	27	31.5	36	40.5	45	49.5	54	58.5	63	67.5	72	
3	100*	100*	90												
3.5	90	90	84	75											
4	80	80	75	70											
4.5	63	63	62	58	58										
5	54	54	53	53	53										
5.5	45	45	44	42	42	42									
6	40	40	39	38	38	38									
7	29	29	29	29	29	29	28								
8	22	22	23	22	23	23	23								
9	17	17	18	17	18	18.5	19	18							
10		14	15	14	15	15.5	16	15							
11		11	12	11	12	12.5	13	12	12						
12		9	10	9	10	10.5	11	10	10	10					
14			7	6.2	7.2	7.7	8.4	8	8	8	8				
16			4.7	4.2	5	5.5	6.2	5.8	5.8	6	6	6			
18				2.5	3.3	4	4.5	4	3.8	4	4.4	4.7	5		
20				1.3	2	2.6	3.4	2.8	2.8	3	3.2	3.5	4	4	
22						1.6	2.4	1.8	1.8	2	2.2	2.5	3	3	
24							1.5			1.1	1.4	1.6	2	2	
26												1.1	1.4	1.4	
Reeving	14	14	12	10	8	6	4	3	2	2	2	2	2	2	
Hook	90 tons			55 tons				25 tons							
Telescoping mode	I	1	1	1	2	2	2	2	3	3	3	3	3	4	
	II	1	2	2	2	2	2	2	2	3	3	3	3	4	
	III	1	1	2	2	2	2	2	2	3	3	3	3	4	
	IV	1	1	1	1	2	2	2	2	2	3	3	3	4	
	V	1	1	1	1	1	2	2	2	2	2	3	3	4	
	VI	1	1	1	1	1	1	2	2	2	2	2	3	4	

Note: The data indicated with an asterisk (*) are suitable for 110 tons hook.

Table 10 Main boom + jib

Unit: Metric tons

Outriggers fully extended (7.8 m), with 45 tons counterweight, over full range					
Jib length	11.0 m				
	Main boom length	63.0 m		67.5 m	
Boom angle	0°	30°	0°	30°	
82°	6.5	4.5	5.5	4	
80°	6.5	4.4	5.5	3.9	
78°	6.5	4.3	5.5	3.8	
76°	6.2	4.2	5.2	3.7	
74°	5.9	4.1	4.8	3.6	
72°	5.6	4	4.5	3.5	
70°	5.2	3.9	4.2	3.4	
68°	4.8	3.8	3.9	3.3	
66°	4.5	3.7	3.6	3.1	
64°	4.2	3.6	3.3	2.9	
62°	3.9	3.4	3.1	2.8	
60°	3.6	3.2	2.9	2.6	
58°	3.4	3.0	2.7	2.4	
56°	3.2	2.8	2.5	2.3	
54°	3.0	2.7	2.4	2.2	
52°	2.7	2.5	2.2	2.0	
50°	2.5	2.3	2.0	1.9	
48°	2.1	2.0	1.8	1.7	
46°	1.9	1.8	1.6	1.5	
44°	1.7	1.6	1.4	1.3	
42°	1.5	1.4	1.2	1.1	
40°	1.3	1.2			
Reeving	1				
Hook	7 tons				
Telescoping mode	I	3	3	3	3
	II	3	3	3	3
	III	3	3	3	3
	IV	3	3	3	3
	V	3	3	3	3
	VI	2	2	3	3

Table 11 Main boom + jib

Unit: Metric tons

Outriggers fully extended (7.8 m), with 32 tons counterweight, over full range					
Jib length	11.0 m				
	Main boom length	63.0 m		67.5 m	
Boom angle	0°	30°	0°	30°	
82°	6.5	4.5	5.5	4	
80°	6.5	4.4	5.5	3.9	
78°	6.5	4.3	5.5	3.8	
76°	6.2	4.2	5.2	3.7	
74°	5.9	4.1	4.8	3.6	
72°	5.6	4.0	4.5	3.5	
70°	5.2	3.9	4.2	3.4	
68°	4.8	3.8	3.9	3.3	
66°	4.5	3.7	3.6	3.1	
64°	4.2	3.6	3.3	2.9	
62°	3.8	3.4	3.1	2.8	
60°	3.4	3.1	2.8	2.6	
58°	3.0	2.8	2.6	2.3	
56°	2.6	2.5	2.3	2.1	
54°	2.3	2.1	1.9	1.8	
52°	2.0	1.8	1.6	1.5	
50°	1.7	1.5	1.4	1.3	
48°	1.5	1.3	1.1	1.0	
46°	1.2	1.1			
44°	1.0	0.9			
Reeving	1				
Hook	7 tons				
Telescoping mode	I	3	3	3	3
	II	3	3	3	3
	III	3	3	3	3
	IV	3	3	3	3
	V	3	3	3	3
	VI	2	2	3	3

Table 12 Main boom + jib Unit: Metric tons

Outriggers fully extended (7.8 m), with 24 tons counterweight, over full range					
Jib length	11.0 m				
Main boom length	63.0 m		67.5 m		
Boom angle	0°	30°	0°	30°	
82°	6.5	4.5	5.5	4	
80°	6.5	4.4	5.5	3.9	
78°	6.5	4.3	5.5	3.8	
76°	6.2	4.2	5.2	3.7	
74°	5.9	4.1	4.8	3.6	
72°	5.6	4.0	4.5	3.5	
70°	5.2	3.9	4.2	3.4	
68°	4.7	3.8	3.9	3.3	
66°	4.2	3.6	3.5	3.0	
64°	3.6	3.2	3.1	2.8	
62°	3.1	2.8	2.6	2.4	
60°	2.6	2.4	2.2	2.0	
58°	2.2	2.0	1.8	1.7	
56°	1.8	1.7	1.5	1.4	
54°	1.5	1.4	1.2	1.1	
52°	1.2	1.1			
Reeving	1				
Hook	7 tons				
Telescoping mode	I	3	3	3	3
	II	3	3	3	3
	III	3	3	3	3
	IV	3	3	3	3
	V	3	3	3	3
	VI	2	2	3	3

Table 13 Main boom + jib Unit: Metric tons

Outriggers fully extended (7.8 m), with 10 tons counterweight, over full range					
Jib length	11.0 m				
Main boom length	63.0 m		67.5 m		
Boom angle	0°	30°	0°	30°	
82°	6.5	4.5	5.5	4	
80°	6.5	4.5	5.5	3.9	
78°	6.5	4.3	5.5	3.8	
76°	6.2	4.2	5.2	3.7	
74°	5.3	4.1	4.5	3.5	
72°	4.3	3.6	3.7	3.1	
70°	3.6	3.0	3.0	2.5	
68°	2.9	2.4	2.4	2.0	
66°	2.2	1.9	1.8	1.6	
64°	1.7	1.4	1.3	1.1	
62°	1.2	1.0			
Reeving	1				
Hook	7 tons				
Telescoping mode	I	3	3	3	3
	II	3	3	3	3
	III	3	3	3	3
	IV	3	3	3	3
	V	3	3	3	3
	VI	2	2	3	3

Table 14 Main boom + jib Unit: Metric tons

Outriggers fully extended (7.8 m), with 45 tons counterweight, over full range					
Jib length	18.6 m				
Main boom length	63.0 m		67.5 m		
Boom angle	0°	30°	0°	30°	
82°	4.5	2.5	3.5	2.0	
80°	4.3	2.5	3.5	2.0	
78°	4.1	2.4	3.5	2.0	
76°	3.9	2.4	3.3	1.9	
74°	3.6	2.2	3.1	1.9	
72°	3.3	2.1	2.9	1.8	
70°	3.1	2.0	2.7	1.8	
68°	2.9	1.9	2.5	1.7	
66°	2.7	1.8	2.4	1.7	
64°	2.5	1.8	2.2	1.6	
62°	2.4	1.7	2.0	1.5	
60°	2.2	1.7	1.9	1.5	
58°	2.1	1.6	1.7	1.4	
56°	2.0	1.6	1.6	1.4	
54°	1.9	1.5	1.5	1.3	
52°	1.8	1.5	1.4	1.2	
50°	1.7	1.4	1.3	1.1	
48°	1.5	1.3	1.2	1.0	
46°	1.2	1.1			
Reeving	1				
Hook	7 tons				
Telescoping mode	I	3	3	3	3
	II	3	3	3	3
	III	3	3	3	3
	IV	3	3	3	3
	V	3	3	3	3
	VI	2	2	3	3

Table 15 Main boom + jib Unit: Metric tons

Outriggers fully extended (7.8 m), with 32 tons counterweight, over full range					
Jib length	18.6 m				
Main boom length	63.0 m		67.5 m		
Boom angle	0°	30°	0°	30°	
82°	4.5	2.5	3.5	2.0	
80°	4.3	2.5	3.5	2.0	
78°	4.1	2.4	3.5	2.0	
76°	3.9	2.4	3.3	1.9	
74°	3.6	2.2	3.1	1.9	
72°	3.3	2.1	2.9	1.8	
70°	3.1	2.0	2.7	1.8	
68°	2.9	1.9	2.5	1.7	
66°	2.7	1.8	2.4	1.7	
64°	2.5	1.8	2.2	1.6	
62°	2.4	1.7	2.0	1.5	
60°	2.2	1.7	1.9	1.5	
58°	2.0	1.6	1.7	1.4	
56°	1.8	1.5	1.5	1.3	
54°	1.5	1.3	1.2	1.0	
52°	1.2	1.1			
Reeving	1				
Hook	7 tons				
Telescoping mode	I	3	3	3	3
	II	3	3	3	3
	III	3	3	3	3
	IV	3	3	3	3
	V	3	3	3	3
	VI	2	2	3	3

Table 16 Main boom + jib Unit: Metric tons

Outriggers fully extended (7.8 m), with 24 tons counterweight, over full range				
Jib length	18.6 m			
Main boom length	63.0 m		67.5 m	
Boom angle	0°	30°	0°	30°
82°	4.5	2.5	3.5	2.0
80°	4.3	2.5	3.5	2.0
78°	4.1	2.4	3.5	2.0
76°	3.9	2.4	3.3	1.9
74°	3.6	2.2	3.1	1.9
72°	3.3	2.1	2.9	1.8
70°	3.1	2.0	2.7	1.8
68°	2.9	1.9	2.5	1.7
66°	2.7	1.8	2.4	1.7
64°	2.4	1.8	2.1	1.6
62°	2.1	1.7	1.8	1.4
60°	1.8	1.6	1.4	1.2
58°	1.4	1.2		
56°	1.1			
Reeving	1			
Hook	7 tons			
Telescoping mode	I	3	3	3
	II	3	3	3
	III	3	3	3
	IV	3	3	3
	V	3	3	3
	VI	2	2	3

Table 17 Main boom + jib Unit: Metric tons

Outriggers fully extended (7.8 m), with 10 tons counterweight, over full range				
Jib length	18.6 m			
Main boom length	63.0 m		67.5 m	
Boom angle	0°	30°	0°	30°
82°	4.5	2.5	3.5	2.0
80°	4.3	2.5	3.5	2.0
78°	4.1	2.4	3.5	2.0
76°	3.9	2.4	3.3	1.9
74°	3.5	2.2	3.1	1.8
72°	3.2	2.1	2.6	1.7
70°	2.6	1.9	2.1	1.6
68°	2.0	1.5	1.6	1.2
66°	1.5	1.1		
Reeving	1			
Hook	7 tons			
Telescoping mode	I	3	3	3
	II	3	3	3
	III	3	3	3
	IV	3	3	3
	V	3	3	3
	VI	2	2	3

Table 18 Main boom + jib Unit: Metric tons

Outriggers fully extended (7.8 m), with 45 tons counterweight, over full range				
Jib length	26.6 m			
Main boom length	63.0 m		67.5 m	
Boom angle	0°	30°	0°	30°
82°	2.5		2.0	
80°	2.5		2.0	
78°	2.5		2.0	
76°	2.3		1.9	
74°	2.1		1.8	
72°	1.9		1.7	
70°	1.8		1.6	
68°	1.7		1.5	
66°	1.6		1.4	
64°	1.5		1.3	
62°	1.4		1.2	
60°	1.3		1.1	
58°	1.2		1.0	
56°	1.1			
54°	1.0			
Reeving	1			
Hook	7 tons			
Telescoping mode	I	3		3
	II	3		3
	III	3		3
	IV	3		3
	V	3		3
	VI	2		3

Table 19 Main boom + jib Unit: Metric tons

Outriggers fully extended (7.8 m), with 32 tons counterweight, over full range				
Jib length	26.6 m			
Main boom length	63.0 m		67.5 m	
Boom angle	0°	30°	0°	30°
82°	2.5		2.0	
80°	2.5		2.0	
78°	2.5		2.0	
76°	2.3		1.9	
74°	2.1		1.8	
72°	1.9		1.7	
70°	1.8		1.6	
68°	1.7		1.5	
66°	1.6		1.4	
64°	1.5		1.3	
62°	1.4		1.2	
60°	1.3		1.1	
58°	1.2			
56°	1.1			
Reeving	1			
Hook	7 tons			
Telescoping mode	I	3		3
	II	3		3
	III	3		3
	IV	3		3
	V	3		3
	VI	2		3

Table 20 Main boom + jib Unit: Metric tons

Outriggers fully extended (7.8 m), with 24 tons counterweight, over full range				
Jib length	26.6 m			
Main boom length	63.0 m		67.5 m	
Boom angle	0°	30°	0°	30°
82°	2.5		2.0	
80°	2.5		2.0	
78°	2.5		2.0	
76°	2.3		1.9	
74°	2.1		1.8	
72°	1.9		1.7	
70°	1.8		1.6	
68°	1.7		1.5	
66°	1.6		1.4	
64°	1.5		1.3	
62°	1.3		1.1	
60°	1.2			
Reeving	1			
Hook	7 tons			
Telescoping mode	I	3		3
	II	3		3
	III	3		3
	IV	3		3
	V	3		3
	VI	2		3

Table 21 Main boom + jib Unit: Metric tons

Outriggers fully extended (7.8 m), with 10 tons counterweight, over full range				
Jib length	26.6 m			
Main boom length	63.0 m		67.5 m	
Boom angle	0°	30°	0°	30°
82°	2.5		2.0	
80°	2.5		2.0	
78°	2.5		2.0	
76°	2.3		1.9	
74°	2.1		1.8	
72°	1.9		1.6	
70°	1.8		1.4	
68°	1.3			
Reeving	1			
Hook	7 tons			
Telescoping mode	I	3		3
	II	3		3
	III	3		3
	IV	3		3
	V	3		3
	VI	2		3

Table 22 Main boom + jib Unit: Metric tons

Outriggers intermediately extended (5.3 m), with 45 tons counterweight, over full range				
Jib length	11.0 m			
Main boom length	63.0 m		67.5 m	
Boom angle	0°	30°	0°	30°
82°	6.5	4.5	5.5	4
80°	6.5	4.5	5.5	3.9
78°	6.5	4.3	5.5	3.8
76°	6.2	4.2	5.2	3.7
74°	5.9	4.1	4.8	3.6
72°	5.6	4.0	4.5	3.5
70°	5.2	3.9	4.2	3.4
68°	4.7	3.8	3.9	3.2
66°	4.1	3.6	3.5	3.0
64°	3.6	3.2	3.1	2.8
62°	3.1	2.8	2.7	2.4
60°	2.6	2.4	2.2	2.0
58°	2.2	2.0	1.9	1.7
56°	1.8	1.6	1.5	1.4
54°	1.5	1.3	1.2	1.1
52°	1.2	1.0		
Reeving	1			
Hook	7 tons			
Telescoping mode	I	3	3	3
	II	3	3	3
	III	3	3	3
	IV	3	3	3
	V	3	3	3
	VI	2	2	3

Table 23 Main boom + jib Unit: Metric tons

Outriggers intermediately extended (5.3 m), with 32 tons counterweight, over full range				
Jib length	11.0 m			
Main boom length	63.0 m		67.5 m	
Boom angle	0°	30°	0°	30°
82°	6.5	4.5	5.5	4
80°	6.5	4.4	5.5	3.9
78°	6.5	4.3	5.5	3.8
76°	6.2	4.2	5.2	3.7
74°	5.9	4.1	4.8	3.6
72°	5.5	4.0	4.5	3.5
70°	4.6	3.9	4.0	3.3
68°	4.0	3.4	3.4	3.0
66°	3.3	2.9	2.8	2.5
64°	2.7	2.4	2.3	2.0
62°	2.2	2.0	1.9	1.7
60°	1.8	1.6	1.5	1.3
58°	1.4	1.2	1.1	1.0
Reeving	1			
Hook	7 tons			
Telescoping mode	I	3	3	3
	II	3	3	3
	III	3	3	3
	IV	3	3	3
	V	3	3	3
	VI	2	2	3

Table 24 Main boom + jib Unit: Metric tons

Outriggers intermediately extended (5.3 m), with 24 tons counterweight, over full range				
Jib length	11.0 m			
Main boom length	63.0 m		67.5 m	
Boom angle	0°	30°	0°	30°
82°	6.5	4.5	5.5	4
80°	6.5	4.4	5.5	3.9
78°	6.5	4.3	5.5	3.8
76°	6.2	4.2	5.2	3.6
74°	5.3	4.1	4.5	3.4
72°	4.4	3.6	3.7	3.1
70°	3.6	3.1	3.0	2.5
68°	2.9	2.5	2.4	2.0
66°	2.3	2.0	1.9	1.6
64°	1.7	1.5	1.4	1.2
62°	1.3	1.1		
Reeving	1			
Hook	7 tons			
Telescoping mode	I	3	3	3
	II	3	3	3
	III	3	3	3
	IV	3	3	3
	V	3	3	3
	VI	2	2	3

Table 25 Main boom + jib Unit: Metric tons

Outriggers intermediately extended (5.3 m), with 45 tons counterweight, over full range				
Jib length	18.6 m			
Main boom length	63.0 m		67.5 m	
Boom angle	0°	30°	0°	30°
82°	4.5	2.5	3.5	2.0
80°	4.3	2.5	3.5	2.0
78°	4.1	2.4	3.5	2.0
76°	3.9	2.4	3.3	1.9
74°	3.6	2.2	3.1	1.9
72°	3.3	2.1	2.9	1.8
70°	3.1	2.0	2.7	1.8
68°	2.9	1.9	2.5	1.7
66°	2.7	1.8	2.4	1.7
64°	2.4	1.8	2.1	1.6
62°	2.2	1.7	1.8	1.4
60°	1.8	1.5	1.5	1.2
58°	1.5	1.2	1.2	1.0
56°	1.2	1.0		
Reeving	1			
Hook	7 tons			
Telescoping mode	I	3	3	3
	II	3	3	3
	III	3	3	3
	IV	3	3	3
	V	3	3	3
	VI	2	2	3

Table 26 Main boom + jib Unit: Metric tons

Outriggers intermediately extended (5.3 m), with 32 tons counterweight, over full range				
Jib length	18.6 m			
Main boom length	63.0 m		67.5 m	
Boom angle	0°	30°	0°	30°
82°	4.5	2.5	3.5	2.0
80°	4.3	2.5	3.5	2.0
78°	4.1	2.4	3.5	2.0
76°	3.9	2.4	3.3	1.9
74°	3.6	2.2	3.1	1.9
72°	3.3	2.1	2.8	1.8
70°	3.1	2.0	2.6	1.7
68°	2.7	1.8	2.4	1.6
66°	2.3	1.7	1.9	1.5
64°	1.9	1.5	1.5	1.2
62°	1.5	1.2		
60°	1.1			
Reeving	1			
Hook	7 tons			
Telescoping mode	I	3	3	3
	II	3	3	3
	III	3	3	3
	IV	3	3	3
	V	3	3	3
	VI	2	2	3

Table 27 Main boom + jib Unit: Metric tons

Outriggers intermediately extended (5.3 m), with 24 tons counterweight, over full range				
Jib length	18.6 m			
Main boom length	63.0 m		67.5 m	
Boom angle	0°	30°	0°	30°
82°	4.5	2.5	3.5	2.0
80°	4.3	2.5	3.5	2.0
78°	4.1	2.4	3.5	2.0
76°	3.8	2.4	3.3	1.9
74°	3.5	2.2	3.1	1.8
72°	3.2	2.0	2.6	1.7
70°	2.6	1.8	2.1	1.6
68°	2.0	1.5	1.6	1.2
66°	1.5	1.1		
Reeving	1			
Hook	7 tons			
Telescoping mode	I	3	3	3
	II	3	3	3
	III	3	3	3
	IV	3	3	3
	V	3	3	3
	VI	2	2	3

Table 28 Main boom + jib Unit: Metric tons

Outriggers intermediately extended (5.3 m), with 45 tons counterweight, over full range				
Jib length	26.6 m			
Main boom length	63.0 m		67.5 m	
Boom angle	0°		0°	
82°	2.5		2.0	
80°	2.5		2.0	
78°	2.5		2.0	
76°	2.3		1.9	
74°	2.1		1.8	
72°	1.9		1.7	
70°	1.8		1.6	
68°	1.7		1.5	
66°	1.6		1.4	
64°	1.5		1.2	
62°	1.3		1.1	
60°	1.2			
Reeving	1			
Hook	7 tons			
Telescoping mode	I	3		3
	II	3		3
	III	3		3
	IV	3		3
	V	3		3
	VI	2		3

Table 29 Main boom + jib Unit: Metric tons

Outriggers intermediately extended (5.3 m), with 32 tons counterweight, over full range				
Jib length	26.6 m			
Main boom length	63.0 m		67.5 m	
Boom angle	0°		0°	
82°	2.5		2.0	
80°	2.5		2.0	
78°	2.5		2.0	
76°	2.3		1.9	
74°	2.1		1.8	
72°	1.9		1.7	
70°	1.8		1.6	
68°	1.7		1.4	
66°	1.6		1.2	
64°	1.2			
Reeving	1			
Hook	7 tons			
Telescoping mode	I	3		3
	II	3		3
	III	3		3
	IV	3		3
	V	3		3
	VI	2		3

Table 30 Main boom + jib Unit: Metric tons

Outriggers intermediately extended (5.3 m), with 24 tons counterweight, over full range				
Jib length	26.6 m			
Main boom length	63.0 m		67.5 m	
Boom angle	0°		0°	
82°	2.5		2.0	
80°	2.5		2.0	
78°	2.5		2.0	
76°	2.3		1.9	
74°	2.1		1.8	
72°	1.9		1.6	
70°	1.7		1.4	
68°	1.3		1.0	
Reeving	1			
Hook	7 tons			
Telescoping mode	I	3		3
	II	3		3
	III	3		3
	IV	3		3
	V	3		3
	VI	2		3

Table 31 Main boom + tip boom

Unit: Metric tons

Outriggers fully extended (7.8 m), with 45 tons counterweight, over full range															
Radius (m)	Boom length (m)														
	13.5	18.0	22.5	27.0	31.5	36.0	40.5	45.0	49.5	54.0	58.5	63.0	67.5	72	
3.0	28														
3.5	27	27													
4.0	26.5	26.5	27												
4.5	26	26	26.5												
5.0	25.5	25.5	26	27											
5.5	25	25	25.5	26.5											
6.0	24.5	24.5	25	26	26										
7.0	23.5	24	24.5	25.5	26	24									
8.0	22.5	23.5	24	25	25.5	24	22								
9.0	21.5	23	23.5	24.5	25	24	21								
10.0	20.5	22.5	23	24	24.5	24	20	20							
11.0	20	22	22.5	23.5	24	23.5	19	19	18						
12.0	19.5	21.5	22	23	23.5	23	18	18	17	15					
14.0		20.5	21.5	22.5	23	22.5	16.5	17	16	14	12				
16.0		19.5	20.5	21.5	22	21.5	15	16	15	13	11	9			
18.0			19.5	19	19.5	19.5	14	15	14	12	10.4	8.5	7		
20.0			16.5	16	16.5	16.5	13	14	12.5	11	9.8	8	6.6	5	
22.0				13	14	14.5	12	12.5	11.5	10.2	9.2	7.5	6.3	5	
24.0					11	12	12.5	11	11.5	10.5	9.4	8.6	7.2	6	5
26.0					10	10.5	10.5	10.5	9.5	8.7	8	6.9	5.7	4.8	
28.0					8.5	9	9.5	9.2	8.6	8	7.4	6.6	5.4	4.5	
30.0					8	8.5	8.2	7.8	7.4	6.9	6.3	5.1	4.3		
32.0					7	7.5	7.2	7.2	6.8	6.4	5.8	4.8	4.1		
34.0						6.5	6.2	6.2	6.2	5.9	5.4	4.5	3.9		
36.0						5.7	5.4	5.4	5.6	5.4	5.1	4.2	3.7		
38.0							4.6	4.6	4.8	4.9	4.7	3.9	3.5		
40.0							4	4	4.2	4.4	4.3	3.6	3.3		
42.0								3.4	3.6	3.8	4	3.4	3.1		
44.0									2.9	3.1	3.3	3.6	3.2	2.9	
46.0										2.6	2.8	3.1	3	2.7	
48.0										2.2	2.4	2.7	2.8	2.5	
50.0											2	2.3	2.5	2.3	
52.0											1.6	2	2.2	2.1	
54.0												1.6	1.9	1.9	
56.0												1.3	1.6	1.7	
58.0													1.3	1.4	
60.0														1.1	
Reeving	4	4	4	4	4	3	3	3	3	2	2	2	2	2	
Hook	55 tons					25 tons									
Telescoping mode	I	1	1	1	2	2	2	2	3	3	3	3	3	3	4
	II	1	2	2	2	2	2	2	3	3	3	3	3	3	4
	III	1	1	2	2	2	2	2	2	3	3	3	3	3	4
	IV	1	1	1	1	2	2	2	2	2	2	3	3	3	4
	V	1	1	1	1	1	2	2	2	2	2	2	3	3	4
	VI	1	1	1	1	1	1	2	2	2	2	2	2	3	4

Table 32 Main boom + tip boom

Unit: Metric tons

Outriggers fully extended (7.8 m), with 32 tons counterweight, over full range															
Radius (m)	Boom length (m)														
	13.5	18.0	22.5	27.0	31.5	36.0	40.5	45.0	49.5	54.0	58.5	63.0	67.5	72	
3.0	28														
3.5	27	27													
4.0	26.5	26.5	27												
4.5	26	26	26.5												
5.0	25.5	25.5	26	27											
5.5	25	25	25.5	26.5											
6.0	24.5	24.5	25	26	26										
7.0	23.5	24	24.5	25.5	26	24									
8.0	22.5	23.5	24	25	25.5	24	22								
9.0	21.5	23	23.5	24.5	25	24	21								
10.0	20.5	22.5	23	24	24.5	24	20	20							
11.0	20	22	22.5	23.5	24	23.5	19	19	18						
12.0	19.5	21.5	22	23	23.5	23	18	18	17	15					
14.0		20.5	21.5	22.5	23	22.5	16.5	17	16	14	12				
16.0		19.5	20.5	21.5	22	21.5	15	16	15	13	11	9			
18.0			19.5	19	19.5	19.5	14	15	14	12	10.4	8.5	7		
20.0			16.5	16	16.5	16.5	13	14	12.5	11	9.8	8	6.6	5	
22.0				13	14	14.5	12	12.5	11.5	10.2	9.2	7.5	6.3	5	
24.0					11	12	12.5	11	11.5	10.5	9.4	8.6	7.2	6	5
26.0					10	10.5	10.5	10.5	9.5	8.7	8	6.9	5.7	4.8	
28.0					8.5	9	9.5	9.2	8.6	8	7.4	6.6	5.4	4.5	
30.0					8	8.5	8.2	7.8	7.4	6.9	6.3	5.1	4.3		
32.0					7	7.5	7.2	7.2	6.8	6.4	5.8	4.8	4.1		
34.0						6.5	6.2	6.2	6.2	5.9	5.4	4.5	3.9		
36.0						5.7	5.4	5.4	5.6	5.4	5.1	4.2	3.7		
38.0							4.6	4.6	4.8	4.9	4.7	3.9	3.5		
40.0							4	4	4.2	4.4	4.3	3.6	3.3		
42.0								3.4	3.6	3.8	4	3.4	3.1		
44.0									2.9	3.1	3.3	3.6	3.2	2.9	
46.0										2.6	2.8	3.1	3	2.7	
48.0										2.2	2.4	2.7	2.8	2.5	
50.0											2	2.3	2.5	2.3	
52.0											1.6	2	2.2	2.1	
54.0												1.6	1.9	1.9	
56.0												1.3	1.6	1.7	
58.0													1.3	1.4	
60.0														1.1	
Reeving	4	4	4	4	4	3	3	3	3	2	2	2	2	2	
Hook	55 tons					25 tons									
Telescoping mode	I	1	1	1	2	2	2	2	3	3	3	3	3	3	4
	II	1	2	2	2	2	2	2	3	3	3	3	3	3	4
	III	1	1	2	2	2	2	2	2	3	3	3	3	3	4
	IV	1	1	1	1	2	2	2	2	2	2	3	3	3	4
	V	1	1	1	1	1	2	2	2	2	2	2	3	3	4
	VI	1	1	1	1	1	1	2	2	2	2	2	2	2	3

Table 33 Main boom + tip boom

Unit: Metric tons

Outriggers fully extended (7.8 m), with 24 tons counterweight, over full range																			
Radius (m)	Boom length (m)																		
	13.5	18.0	22.5	27.0	31.5	36.0	40.5	45.0	49.5	54.0	58.5	63.0	67.5	72					
3.0	28																		
3.5	27	27																	
4.0	26.5	26.5	27																
4.5	26	26	26.5																
5.0	25.5	25.5	26	27															
5.5	25	25	25.5	26.5															
6.0	24.5	24.5	25	26	26														
7.0	23.5	24	24.5	25.5	26	24													
8.0	22.5	23.5	24	25	25.5	24	22												
9.0	21.5	23	23.5	24.5	25	24	21												
10.0	20.5	22.5	23	24	24.5	24	20	20											
11.0	20	22	22.5	23.5	24	23.5	19	19	18										
12.0	19.5	21.5	22	23	23.5	23	18	18	17	15									
14.0		20.5	21	21.5	22	22	16.5	17	16	14	12								
16.0		17	17.5	17	17.5	18	15	16	15	13	11	9							
18.0			14	13.5	14	14.5	14	14.5	13.5	12	10.4	8.5	7						
20.0			11.5	11	11.5	12	12.5	12	12	11	9.8	8	6.6	5					
22.0				9	9.5	10	10.5	10	10	10	9.2	7.5	6.3	5					
24.0					7.6	8.1	8.6	9.2	8.6	8.6	8.7	8.4	7.2	6	5				
26.0						6.7	7.2	7.8	7.3	7.3	7.4	7.6	6.9	5.7	4.8				
28.0						5.6	6.1	6.7	6.2	6.2	6.3	6.5	6.4	5.4	4.5				
30.0							5.1	5.7	5.2	5.2	5.3	5.5	5.8	5.1	4.3				
32.0								4.2	4.8	4.3	4.3	4.4	4.6	5	4.8	4.1			
34.0									4.1	3.6	3.6	3.7	3.9	4.3	4.5	3.9			
36.0										3.4	3	2.9	3	3.3	3.6	4	3.7		
38.0											2.4	2.3	2.4	2.7	3	3.4	3.4		
40.0												1.8	1.7	1.8	2.1	2.4	2.8	2.8	
42.0													1.4	1.7	2	2.3	2.3	2.3	
44.0														1.2	1.5	1.9	1.9	1.9	
46.0															1.1	1.5	1.5	1.5	
48.0																1.1	1.1	1.1	
Reeving	4	4	4	4	4	3	3	3	3	3	2	2	2	2	2	2	2	2	
Hook	55 tons						25 tons												
Telescoping mode	I	1	1	1	2	2	2	2	3	3	3	3	3	3	3	3	4	4	
	II	1	2	2	2	2	2	2	2	3	3	3	3	3	3	3	4	4	
	III	1	1	2	2	2	2	2	2	2	3	3	3	3	3	4	4	4	
	IV	1	1	1	1	1	2	2	2	2	2	3	3	3	3	4	4	4	
	V	1	1	1	1	1	2	2	2	2	2	2	3	3	3	4	4	4	
	VI	1	1	1	1	1	1	2	2	2	2	2	2	3	3	4	4	4	

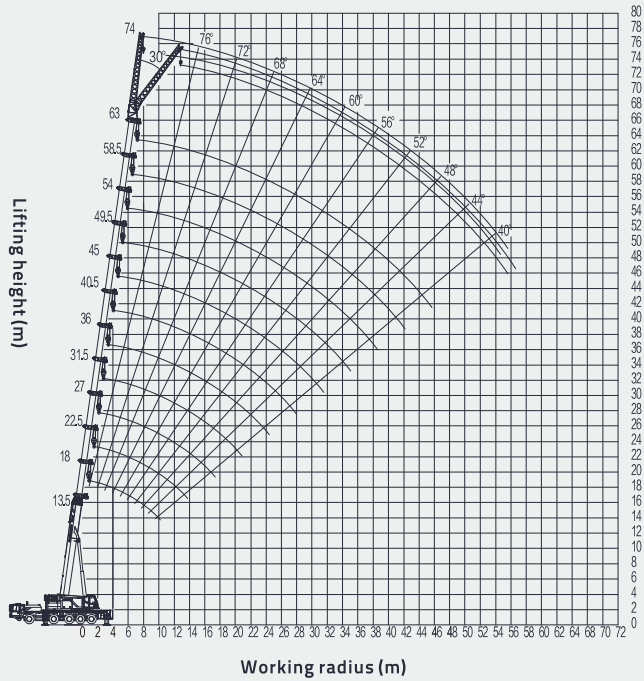
Table 34 Main boom + tip boom

Unit: Metric tons

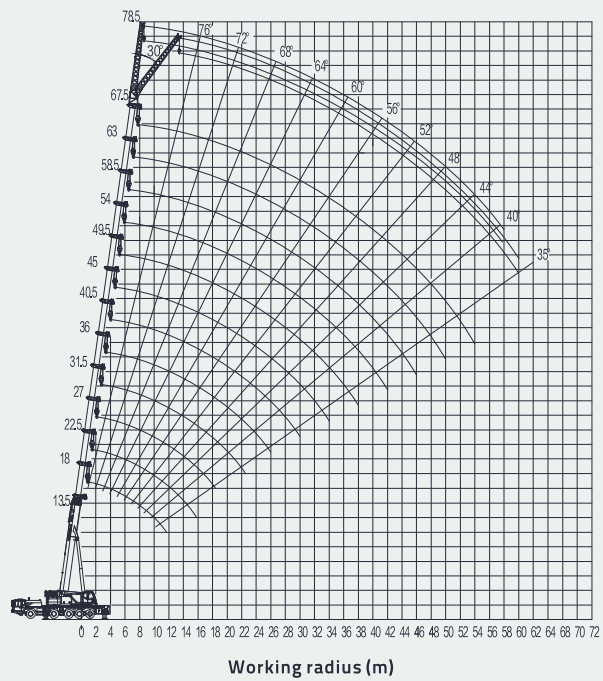
Outriggers fully extended (7.8 m), with 10 tons counterweight, over full range																			
Radius (m)	Boom length (m)																		
	13.5	18.0	22.5	27.0	31.5	36.0	40.5	45.0	49.5	54.0	58.5	63.0	67.5	72					
3.0	28																		
3.5	27	27																	
4.0	26.5	26.5	27																
4.5	26	26	26.5																
5.0	25.5	25.5	26.5	27															
5.5	25	25	25.5	26.5															
6.0	24.5	24.5	25	26	26														
7.0	23.5	24	24.5	25.5	26	24													
8.0	22.5	23.5	24	25	25.5	24	22												
9.0	21.5	23	23.5	24.5	25	24	21												
10.0	20.5	22.5	23	24	24.5	24	20	19											
11.0	20	22	22.5	22.5	23	22.5	19	19	17										
12.0	19.5	20	20.5	19.5	20	20	18	18	17	14									
14.0		15	15.5	14.5	15	15.5	15	16	15	13	11								
16.0		11.5	12	11	11.5	12	12.5	12	12	12	10	8							
18.0			9.5	8.5	9	9.5	10	9.5	9.5	9.5	9.5	7.5	5						
20.0				7.5	6.7	7.3	8.0	8.5	8	8	8	7	5	4					
22.0					5.1	5.7	6.4	6.9	6.4	6.4	6.4	6.5	6.5	5	4				
24.0						3.7	4.3	5	5.5	5	5	5.1	5.3	5.5	4.8	3.8			
26.0							3.2	3.9	4.5	4	4	4.1	4.3	4.5	4.3	3.6			
28.0								2.3	3	3.6	3.1	3	3.1	3.3	3.5	3.8	3.4		
30.0									2.2	2.8	2.3	2.2	2.3	2.5	2.8	3.2	3.2		
32.0										1.5	2.1	1.6	1.5	1.6	1.8	2.1	2.5	2.5	
34.0													1.1	1.3	1.5	1.9	1.9	1.9	
36.0															1.1	1.4	1.4	1.4	
Reeving	4	4	4	4	4	3	3	3	3	3	2	2	2	2	2	2	2	2	
Hook	55 tons						25 tons												
Telescoping mode	I	1	1	1	2	2	2	2	3	3	3	3	3	3	3	4	4	4	
	II	1	2	2	2	2	2	2	2	3	3	3	3	3	3	4	4	4	
	III	1	1	2	2	2	2	2	2	2	3	3	3	3	3	4	4	4	
	IV	1	1	1	1	1	2	2	2	2	2	3	3	3	3	4	4	4	
	V	1	1	1	1	1	2	2	2	2	2	2	3	3	3	4	4	4	
	VI	1	1	1	1	1	1	2	2	2	2	2	2	2	3	4	4	4	

Main boom + 11 m jib

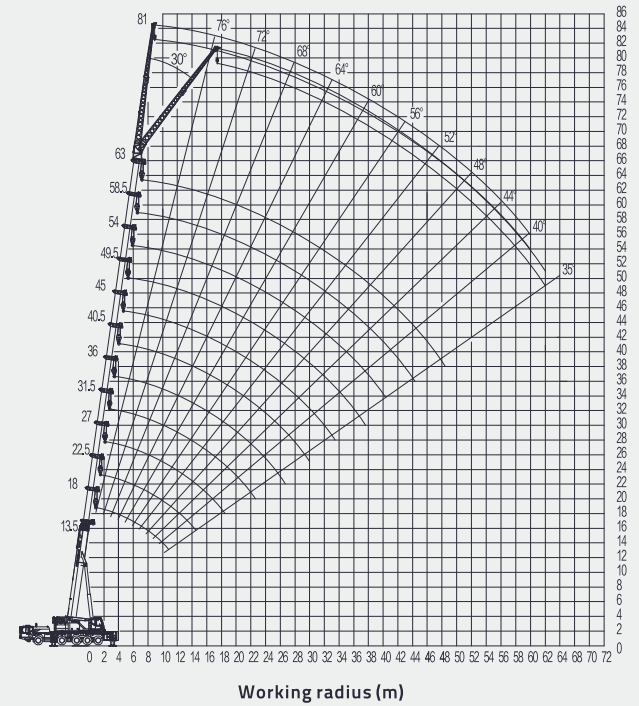
Main boom + 18.6 m jib



63 m main boom + 11 m jib

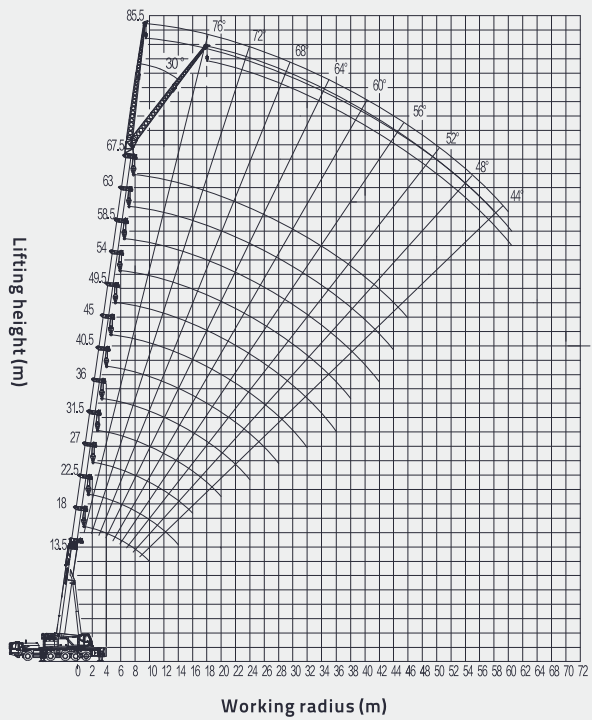


67.5 m main boom + 11 m jib

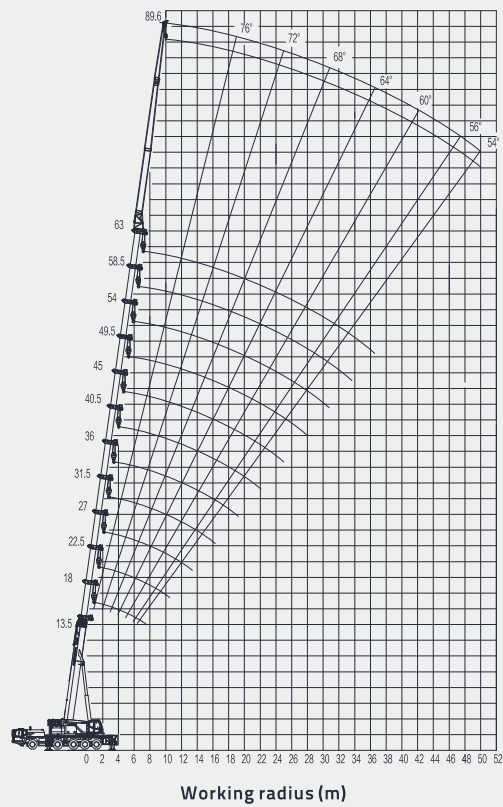


63 m main boom + 18.6 m jib

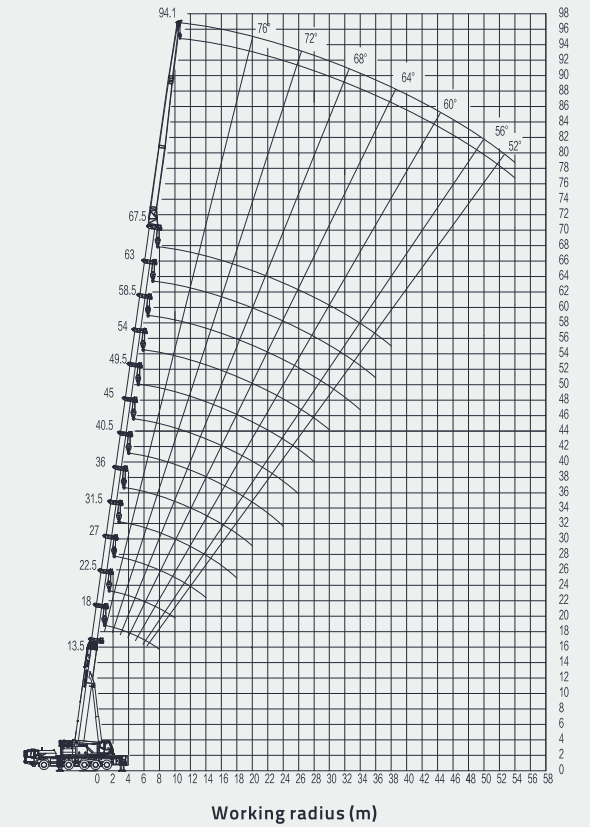
Main boom + 26.6 m jib



67.5 m main boom + 18.6 m jib



63 m main boom + 26.6 m jib



67.5 m main boom + 26.6 m jib

ZOOMLION

ZOOMLION LIFTING MACHINERY COMPANY

Address: Zoomlion Quantang Industrial Park, Changsha Economic-Technological Development Zone, China
Find out more details at: en.zoomlion.com

Copyright © 2014 Zoomlion. All Rights Reserved.

Reproduction and copying any part of the Contents is not allowed for any purposes without Zoomlion's written approval.

