

# Truck Crane



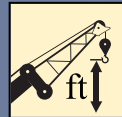
## XCT40U



40 US t



142 ft



197 ft



# Features and Advantages

Equipped with North American general chassis with energy conservation and high efficiency, and the lifting capacity takes the lead in the industry .

It is widely used in construction site, urban reconstruction, transportation, port, bridge, oil field, mine, other places and other complex working environment.





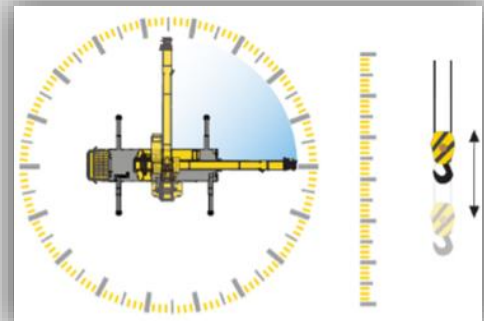
- 5-section boom .fully extended 142ft
- 40USl lifting load at 5ft radius
- 2 jib sections of 30.5ft and 53.5ft
- Max. lifting height 197ft
- Wireless remote control of outrigger
- Tilttable operator's cab

# Features and Advantages



## Super lifting performance

- double-cylinder plus ropes telescoping system
- 5-section boom of 142ft
- Fixed jib of 30.5ft -53.5ft
- 0° , 15° and 30° jib offset angles

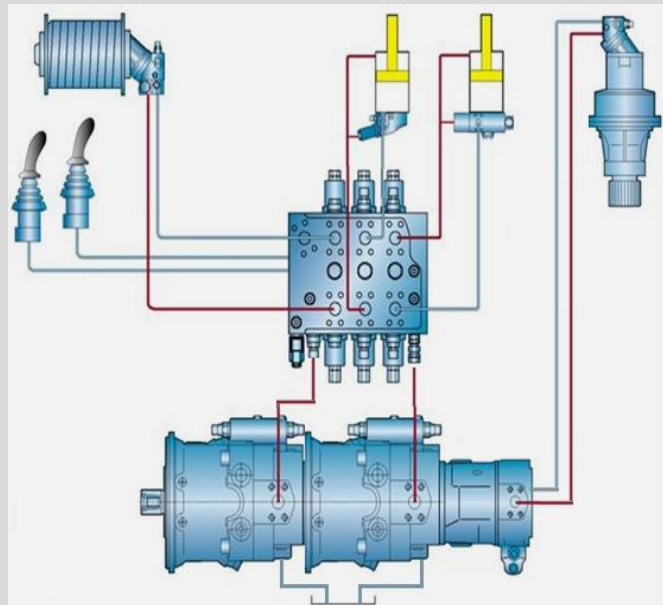


# Features and Advantages



## Precise lifting operation,

- New novel energy-saving hydraulic system, promotes the energy use rate
- High-power hydraulic oil independent radiating system, promoting the working time and reliability
- Dual-pump flow combining and dividing control, large emission pump and active compensation technology promoted hoisting efficiency



- Double-variable mechanism with load sensitive
- Min. stable lifting speed 8.2fpm, and min. stable slewing speed  $0.1^{\circ}/s$



- The flow accurate control, system detection feedback control, element optimization
- Greatly promoting inching control and fully satisfying the accurate hoisting demand

# Features and Advantages



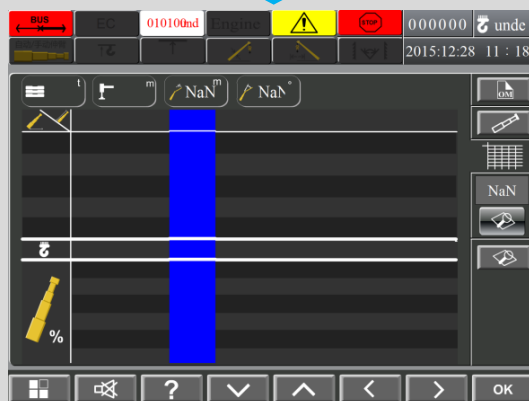
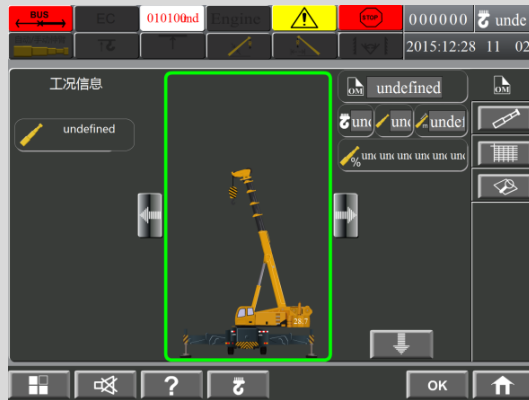
## Outrigger wireless remote control

- Controlling the lifting/falling of main winch and Auxiliary winch within 100m, improving the operation convenience



## Automatic working condition planning technology

- Automatically recommend the most proper working conditions
- Searching and setting work condition simply



## Winch wireless remote control

- Controlling the telescoping of the outriggers within 100m, improving work efficiency

# Features and Advantages



## XCMG man-machine interactive system

- 7 inch color touch screen
- Ergonomically designed working space
- Informative interactive techniques brings more friendly man-machine conversation



# Features and Advantages



## New appearance and humanized design

- A new generation of appearance design makes the whole vehicle powerful and vigorous; Fashionable outlines of driver's cab and operator's cab bring perfect combination of sense of lays and sense of physical strength; ergonomics analysis and humanized details make inherent quality of easy driving, comfortable operation and convenient maintenance.



## Touch button

- Three control areas for safely protection, hoisting operation and operating environment bring convenient control



## Operator's cab

- The new type steel operator's cab
- $0^{\circ} \sim 20^{\circ}$  tilting adopted, broaden the operation view



Add : No.165 Tongshan Road Xuzhou Jiangsu China

Tel : 0516-83462242/83462350

Quality Inquiry Tel : 0516-87888268

Spare Parts Tel : 0516-83461542

Post Code : 221004

Web : [www.xcmg.com/qizhongji](http://www.xcmg.com/qizhongji)

**Service Tel**

**400-110-9999**

**400-001-5678**



This print does not belong to the contract. We reserve the right to modify the design (such as product model, parameters and configuration) without notice for improvement. The pictures are just for reference. The product in the picture may not be standard configuration. Some parts need to be purchased separately. Conform to the local laws for license application and road traveling.