

Features

- First 5 axle 220t all-terrain crane made in China, compact in dimension, light in weight, strong in power and gradeability;
- U-shaped boom design, buckling modulus increased by 15%, max. rated capacity of 220t. And max. hoisting moment of the boom reaches 6900kNm;
- 105m of the fully extended boom combined with jib length is the longest in China. It's the first China-made model fulfilling the hoisting height of 103.5m;
- Fully extending/retracting the main boom can be achieved in 10min. The single-rope speed of hoisting reaches 130m/min;
- Fly jib adjusting continuously from 0°~40° with high performance in operation, reducing the use of labor;
- Short vehicle length, with 6 steering mode and 6 suspension mode to select, result in extraordinary excellent performance in traveling and maneuverability;
- The specialized SANY SYML automatic operation control system realizes a complete logic and interlock monitor and ensures safe operation;
The Red-Star design from a top European company shows the international fashion;
- Joysticks, buttons, instruments and indicators designed according to ergonomic principles, driver's and passenger's seat with high quality of convenience contribute to comfort of operation.



SANY Overseas

Address: 319 Chuanda Road, Chuansha Economic Park, Pudong, Shanghai, China
Postcode: 201200
Website: <http://www.sanygroup.com>
Consultation Hotline: (+86)21-58592902
Email: sanyservice@sany.com.cn

Materials and specifications are subject to change without further notice in accordance with constant technical innovations.
Photos may include additional equipment.

Copyright ©2010 SANY Group Co.,Ltd. All rights reserved.

SAC2200 All-terrain Crane

220t Lifting Capacity



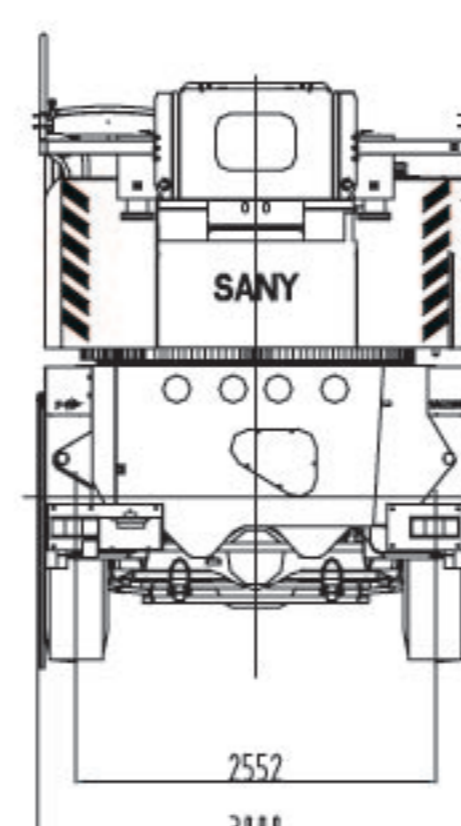
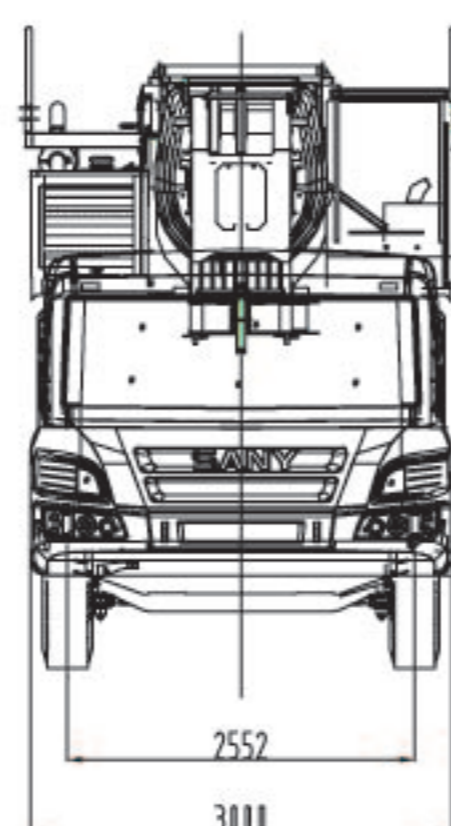
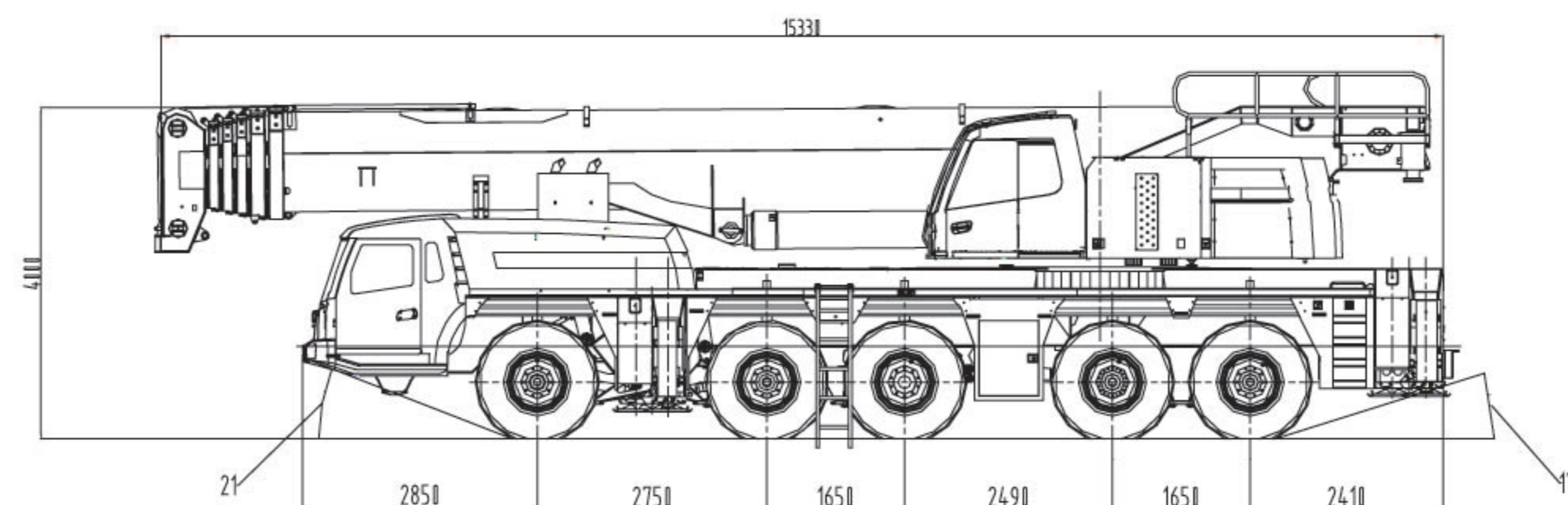
Printed in China



Specifications

Category	Item	Unit	Parameter	Category	Item	Unit	Parameter
Dimensional parameters	Vehicle length	mm	15530	Quality parameter	Vehicle weight (traveling)	kg	60000
	Vehicle width	mm	2995		Front axle load (front axles 1, 2)	kg	12000
	Vehicle height	mm	4000		Rear axle load (rear axles 3, 4, 5)	kg	12000
	Axle base	mm	2750/1650/2490/1650	Model of engine	BENZ OM502LA		
	Wheel base	mm	2552	Rated engine power	kw/rpm	390/1800	
Traveling parameters	Maximum traveling speed	km/h	81	Power parameters	Rated engine torque	N.m/rpm	2400/1100
	Minimum turning radius	m	<10		Emission reference standard	Euro IIIA	
	Minimum ground clearance	mm	325	Maximum rated general lifting capacity	t	220	
	Apartment angle	°	20	Minimum rated range	m	3	
	Departure angle	°	17	Maximum lifting moment	Basic boom	kN.m	6900
	Brake distance (30km/h)	m	<10		Fully extended boom	kN.m	3540
	Maximum gradeability	%	58	Outrigger span (longitudinal and transverse)	m	9.0×8.5	
	Oil consumption/100km	L	72	Main Performance parameter	Lifting height	Basic boom	m
Maximum single-rope lifting speed of main winch (without load)	m/min	130	Fully extended boom			m	62.5
Maximum single-rope lifting speed of auxiliary winch (without load)	m/min	130	Longest boom + jib			m	103.5
Full extension/retraction time of boom	s	550/550	Length of jib		Basic boom	m	13.5
Raising/lowering time of boom	s	90/90			Fully extended boom	m	62
Maximum slewing speed	r/min	1.8			Longest boom + jib	m	105
Operating speed parameters	Full extension/retraction time of horizontal outrigger	s	50/40		Jib offset	°	
	Full extension/retraction time of supporting cylinder	s	50/40				

Dimension



Configuration

NO	Item	Supplier
1	Cab	SANY
2	Engines of superstructure and chassis	Mercedes Benz
3	Gear box	ZF
4	Transfer case	ZF
5	Axle	Kessler
6	Bevel box	ZF
7	Drive shaft	Xuchang Far East
8	Suspension cylinder	Hydac
9	Tire	Michelin
10	Accumulator	Hydac
11	Suspension controller	HYDAC
12	Steering controller	Pal-fin
13	Main Controller / Outrigger controller	SPN
14	ABS controller	WABCO
15	Monitor	SPN
16	Pressure sensor	HYDAC
17	Angle sensor	HYDAC
18	Dual direction inclinometer sensors	SPN
19	ABS sensor	WABCO
20	ABS electromagnetic valve	WABCO
21	Triplet gear pump	Keyuan
22	Bi-directional gear pump (Emergency pump)	Casappa
23	Steering device	ZF
24	Fan motor	Parker
25	Filter	Hydac
26	Three-port flow valve	Oleosta
27	Flow indicator valve	Oleosta

28	Emergency control valve	ZF
29	Engine	Benz
30	Sling bearing	Wuxi Lida Technology Co., Ltd.
31	Wire rope	Diepa
32	Articulated boom	Sany
33	Main pump	Rexroth
34	Drum pump	Rexroth
35	Auxiliary pump set	Keyuan
36	Rotary motor	Rexroth
37	Swing reduction unit	Rexroth
38	Winch motor	Rexroth
39	Winch motor reduction unit	Rexroth
40	Winch balance valve	Wessel
41	Aux winch reduction unit	Wessel
42	Luffing balance valve	Bucher
43	Telescoping balance valve	Wessel

Part	Standard Config.	Optional Config.
Lifting hook	145, 75, 35, 12T lifting hook	165, 115T lifting hook
Outrigger cushion		✓