



POTAIN®
by **Manitowoc**

MDT 809

**HIGHER CAPACITY.
LOWER OPERATING COSTS.**

**HIGHER CAPACITY.
LOWER OPERATING
COSTS.**

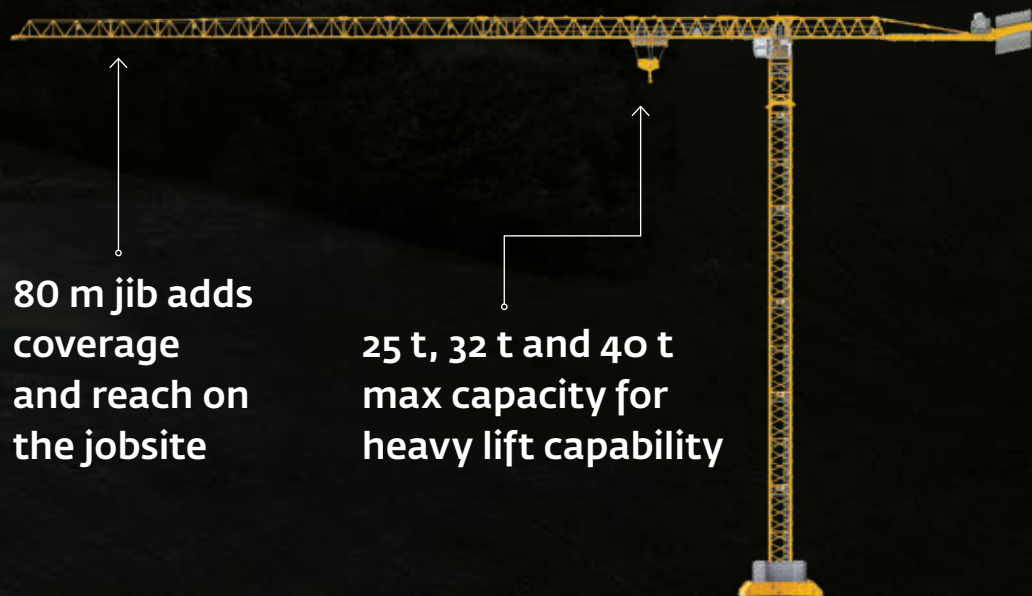


The largest capacity topless crane.

Introducing the new Potain MDT 809. Now you can have the high-capacity lifting performance you expect from a hammerhead tower crane and the reduced operating costs of a topless crane. This crane has the lift capacity necessary for big construction projects along with a compact crane configuration for the tightest and most congested jobsites.

MDT 809 performance features include:

Topless design overlaps and avoids collisions on jobsites when multiple cranes are in use



80 m jib adds coverage and reach on the jobsite

25 t, 32 t and 40 t max capacity for heavy lift capability

Engineered for easy transport.

New design features optimized crane transport, saving you valuable time and money. Crane components are designed to maximize the use of space inside containers or trucks, reducing the number of containers needed for transport.

> Easy transport features:

- All crane sections can be transported by a standard-sized ship container
- Maximum 11 containers are necessary for the rotating section, while standard 40 t capacity cranes require up to 14 containers for transport.
- Rotating cabin to better fit inside shipping containers
- NEW** • 8 m cross base performs like a 10 m chassis but only requires a single container
- NEW** • Protective packaging helps efficient and safe transport and includes:
 - > Brackets to secure the jib sections
 - > Cushioned pads inside the carrier to protect sections and make packing more efficient



Fastest 40 t tower crane assembly in the industry.

The Potain MDT 809 has been designed to set up two times faster than a standard 40 t crane. Configured with an 80 m jib and 50 m mast, assembly is achieved in as little as three days.

> Fast assembly features:

- Compared to a traditional 10 m chassis, the new 8 m cross base can be erected easier and faster
- Designated sling points make lifting and positioning the jib sections easier and more secure
- Rotating cab and folding counter-jib allow easier mounting
- MDT 809 requires less space to assemble than other cranes in its class
- Crane Control System (CCS) enables crane calibration in as little as 15 minutes
- Jib assembly can be completed in various configurations to best utilize space on jobsite and equipment
 - > Jib sections can be pre-assembled on the ground or assembled in the air
 - > The jib can be assembled in sections with a maximum weight package of 13 tons
 - > Jib sections feature connection systems for faster and simpler assembly compared to standard jib designs
 - > The jib has been designed to allow easier access to key crane components for enhanced serviceability

NEW



Specific designs and technologies dedicated to the biggest Potain topless crane.

Leading-edge Potain technologies including the Crane Control System (CCS) and new reinforced K mast deliver maximum performance and jobsite productivity.

> Innovative structural design

In order to provide the MDT 809 with capacity, performance and a compact design, the crane structure has been engineered with these specific features:

NEW

- Jib is designed with a rectangular section that delivers outstanding capacity and ease of setup for technicians

NEW

- Cross base design is only 8 m wide to allow 75 m height under hook and absorb more stress

NEW

- Reinforced K mast: KM 850.14 offers up to 75 m of free-standing height
- Section lengths enable you to perfectly match your requirements including 10 m for rapid erection, 5 m for telescoping and 3,33 m for adjusting heights
- Special features and tools ease maintenance and erection tasks:
 - > Derricks for handling all crane mechanisms
 - > Greater access space for easy maintenance
 - > Slings points for easier crane assembly

> Leading technologies

The new Potain MDT 809 features the expertise of French engineering with technologies that include:

NEW

- Excellent combination of power and speed as two falls on the trolley accommodate fast duty-cycle lifting and four falls deliver heavy lifting capability
- Automatic trolley wire rope tensioning system allows adjustments from inside the cab by the crane operator — perfect for long-term jobsites requiring frequent tensioning
- Available winches from 100 LVF to 270 LVF (150 HPL depending on the crane version) provide maximum loads of 25 t to 40 t

> Crane Control System

The new MDT 809 features the integrated Crane Control System (CCS). Benefits include:

- Crane calibration can be completed in only 15 minutes
- Load curve with P+ maximizes lifting capacities
- Operating profiles are customized to the crane operator
- Ergonomically designed Ultra View cab makes it easy for the crane operator to maximize all features of the Crane Control System
- Compatible with CraneSTAR Diag to deliver real-time maintenance information to any computer screen

CraneSTAR
Diag



Meet all requirements.

With its renowned French engineering, the Potain MDT 809 is the ideal tower crane for the world market. High-lift capacities, fast setup times and a compact erection profile allow it to excel in a wide range of construction applications.

> Designed for industrial and large-scale infrastructure projects such as:



**Pre-fabricated
components**



**Urban
areas**



**Metro
stations**



Shipyards



Bridges



**Mining
sector**



Manitowoc Cranes

Regional headquarters

Americas

Milwaukee, Wisconsin, USA

Tel: +1 414 760 4600

Shady Grove, Pennsylvania, USA

Tel: +1 717 597 8121

Fax: +1 717 597 4062

Europe and Africa

Dardilly, France - TOWERS

Tel: +33 (0) 4 72 18 20 20

Fax: +33 (0) 4 72 18 20 00

Wilhelmshaven, Germany - MOBILE

Tel: +49 (0) 4421 294 0

Fax: +49 (0) 4421 294 4301

APAC

Shanghai, China

Tel: +86 21 6457 0066

Fax: +86 21 6457 4955

Singapore

Tel: +65 6264 1188

Fax: +65 6862 4040

Middle East and India

Dubai, UAE

Tel: +971 4 8862677

Fax: +971 4 8862678/79



This document is non-contractual. Constant improvement and engineering progress make it necessary that we reserve the right to make specification, equipment, and price changes without notice. Illustrations shown may include optional equipment and accessories and may not include all standard equipment.