



Lifting your dreams

TELESCOPIC BOOM CRAWLER CRANE

# GTC-350

35 METRIC TON CAPACITY

TELESCOPIC  
BOOM  
CRAWLER  
CRANE

*The GTC-350:  
High Quality We Are Proud Of*



# MULTI PURPOSE CRANES: LIFTING AND FOUNDATION WORK

*Most practical cranes  
for your job site!*

Crane capacity  
**35 t**

TELESCOPIC BOOM CRAWLER CRANE

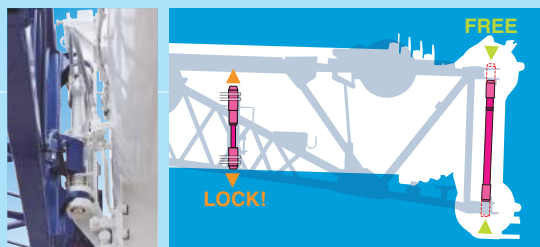
**GTC-350**





## Jib Interlock System

Interlock jib pinning system ensures safer and quicker jib mounting and stowing.



## GTC-350

Crane capacity: 35 t at 3.0 m

Main boom: 3-section,  
10.9 m - 27.2 m

Main jib: 7.2 m

Fly jib: 12.8 m

Maximum lifting height:

26.4 m (Main boom)

33.4 m (Main boom + Main jib)

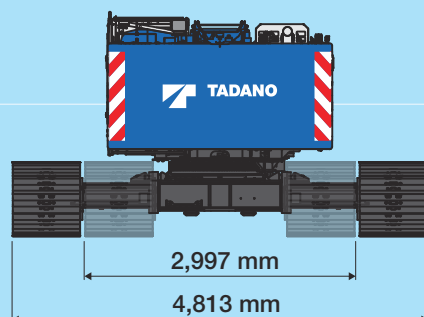
38.9 m (Main boom + Fly jib)

Maximum load radius:

24 m (Main boom)

32 m (Main boom + Main jib)

38 m (Main boom + Fly jib)



40 m

35 m

30 m

25 m

20 m

15 m

10 m

5 m

5°

25°

45°

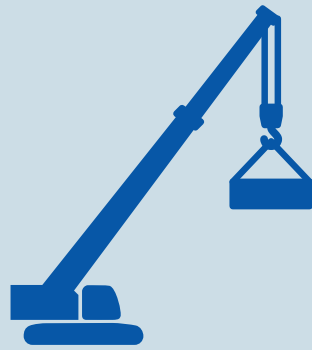
5.6 m

7.2 m

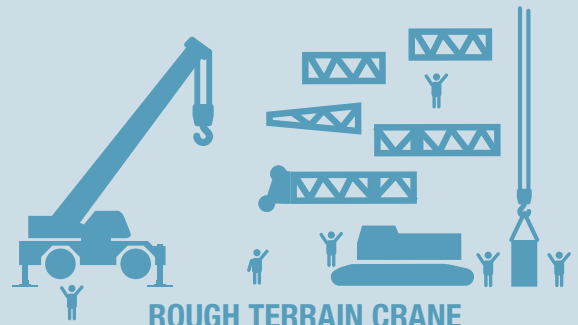
10.9 m–  
27.2 m

# BENEFITS OF TELESCOPIC BOOM CRAWLER CRANES

## Quick & Safer Set Up

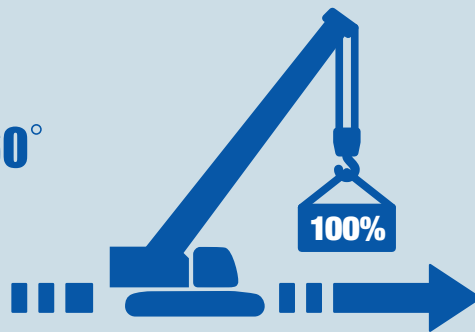


TELESCOPIC BOOM CRAWLER CRANE

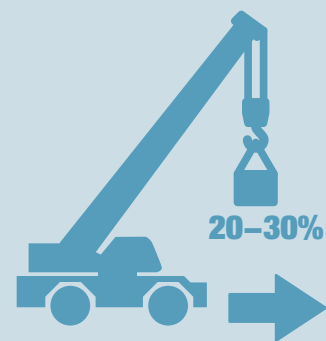


ROUGH TERRAIN CRANE  
& LATTICE BOOM CRAWLER CRANE

## Maximum Pick & Carry Capacity at 360°

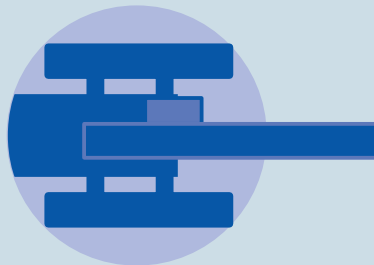


TELESCOPIC BOOM CRAWLER CRANE

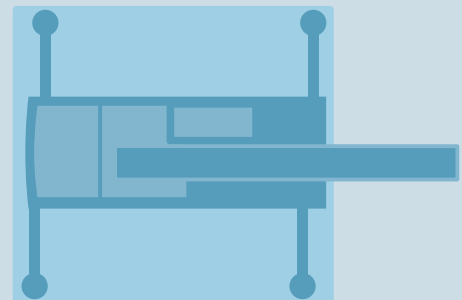


ROUGH TERRAIN CRANE

## Compact Work Dimension Low Ground Bearing Pressure



TELESCOPIC BOOM CRAWLER CRANE



ROUGH TERRAIN CRANE

## Less Transportation Costs



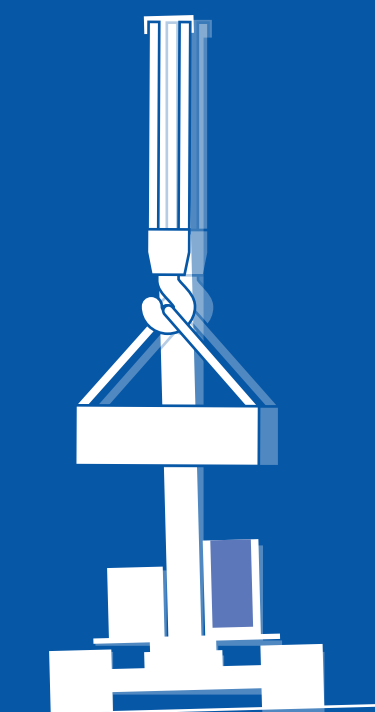
TELESCOPIC BOOM CRAWLER CRANE



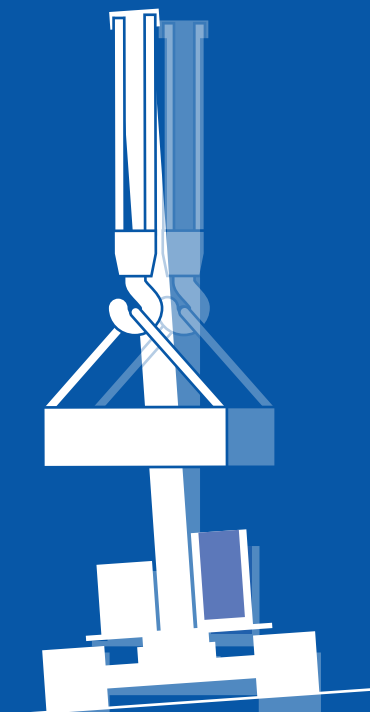
LATTICE BOOM CRAWLER CRANE

# GENUINE PICK & CARRY DESIGN

Level ground load charts available up to 1.5° slope!  
Load chart at 4° slope is top in class!



0°-1.5° slope



4° slope

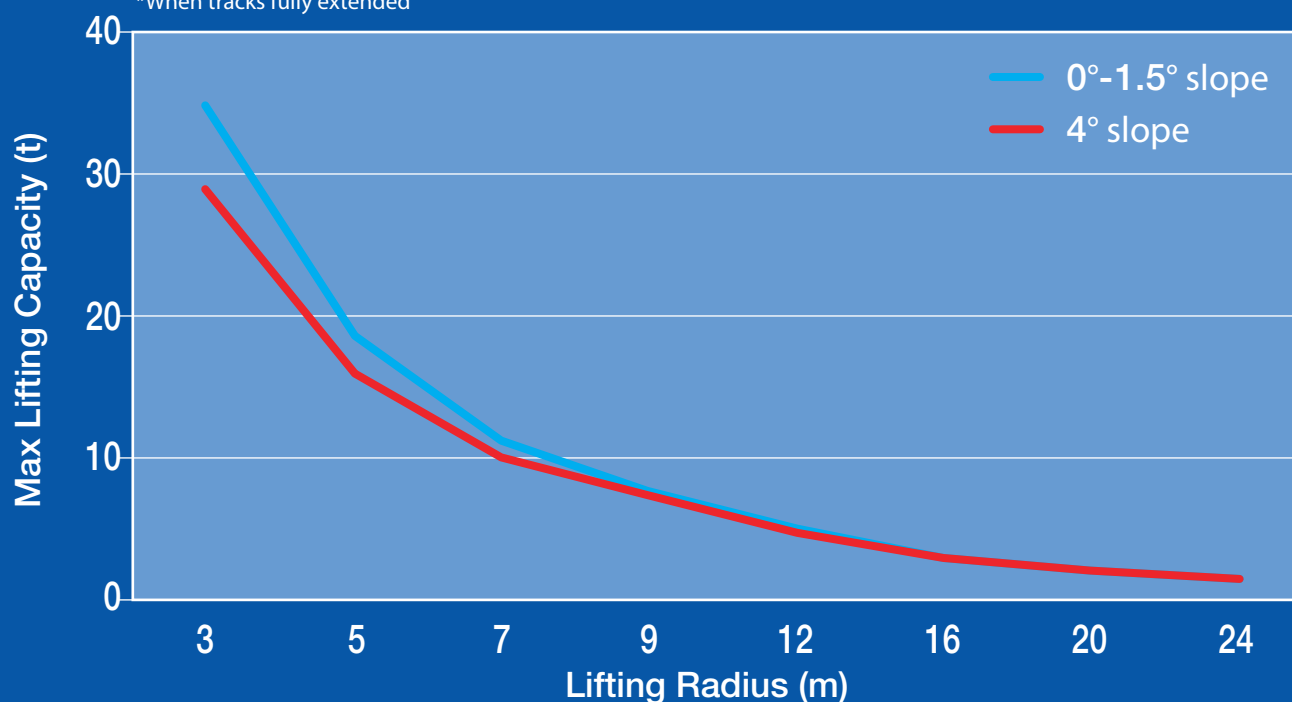
**Pick & Carry even  
on 4 degree slope**



4° slope

**Even at 4° slope the GTC maintains 83% of level ground capacity!**

\*When tracks fully extended





**PRODUCT CONCEPTS**

# New Features

## Quality

The GTC series utilizes superior designs from Tadano's global engineering team incorporating proven components from Tadano Japan, such as jibs, winches, and cylinders to achieve improved quality, performance, and reliability.

## Long Boom and Enhanced Lifting Capacity

The GTC booms are purpose designed and manufactured for telescopic boom crawlers by Tadano Japan.

## Full power boom system

Robust double acting hydraulic cylinder allows telescoping of all rated loads.

## Powerful winch

Grooved drums, cable followers and 3rd wrap shutdown are standard.



# Retains all of the beneficial features of the GTC Series

**Pick & Carry the load on uneven and rough terrain through 360 degrees slew conditions**

**Pick & Carry the load with track retracted position**

**Telescope under full load lifting capacity**

**Automatic switching load charts for operation up to 4 degrees out of level**

**Use of foundation attachments such as vibratory hammer\***

\*ADANO MANTIS Guidelines for vibratory hammer use must be followed.

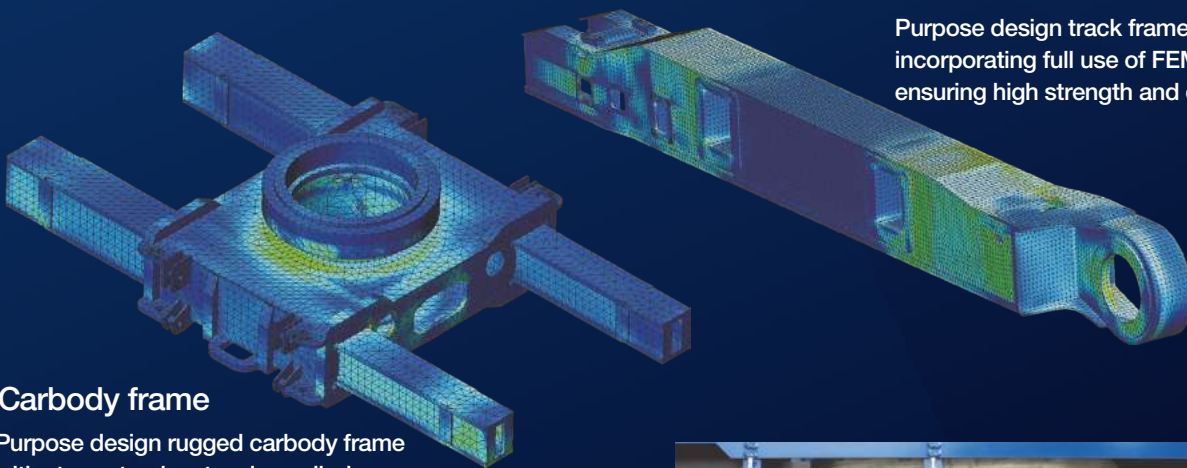
## Tough & Durable Design

Simple control system.  
Class exceeding larger boom sections and boom head, stronger telescopic cylinder.



### Track frame

Purpose design track frame design incorporating full use of FEM analysis ensuring high strength and durability.



### Carbody frame

Purpose design rugged carbody frame with strong track extension cylinders.

## High power engine provides superior travel and multi-function performance

Powerful engine, pump and track drive motor.

Crane Engine: 4-cylinder Cummins QSB 4.5

Tier3, Euromot stage IIIA

(123kW at 2,000 rpm, max. torque 624 Nm at 1,500 rpm)

Tier4f, Euromot stage IV

(129kW at 2,200 rpm, max. torque 705 Nm at 1,500 rpm)





# PRODUCT FEATURES



## Load Moment Indicator [AML-C]

AML-C allows the operator to simultaneously monitor: boom angle, boom length, crane inclination angle, track extension width, counterweight configuration, rated lifting capacity and hook load. While traveling under load, the crane inclination can be displayed and the AML-C provides the corresponding rated lifting based on actual inclination.

The operator configurable work range limit function warns the operator and provides function soft stop when the crane approaches the pre-registered boom angle (upper limit, lower limit), lifting height, load radius and swing angle.

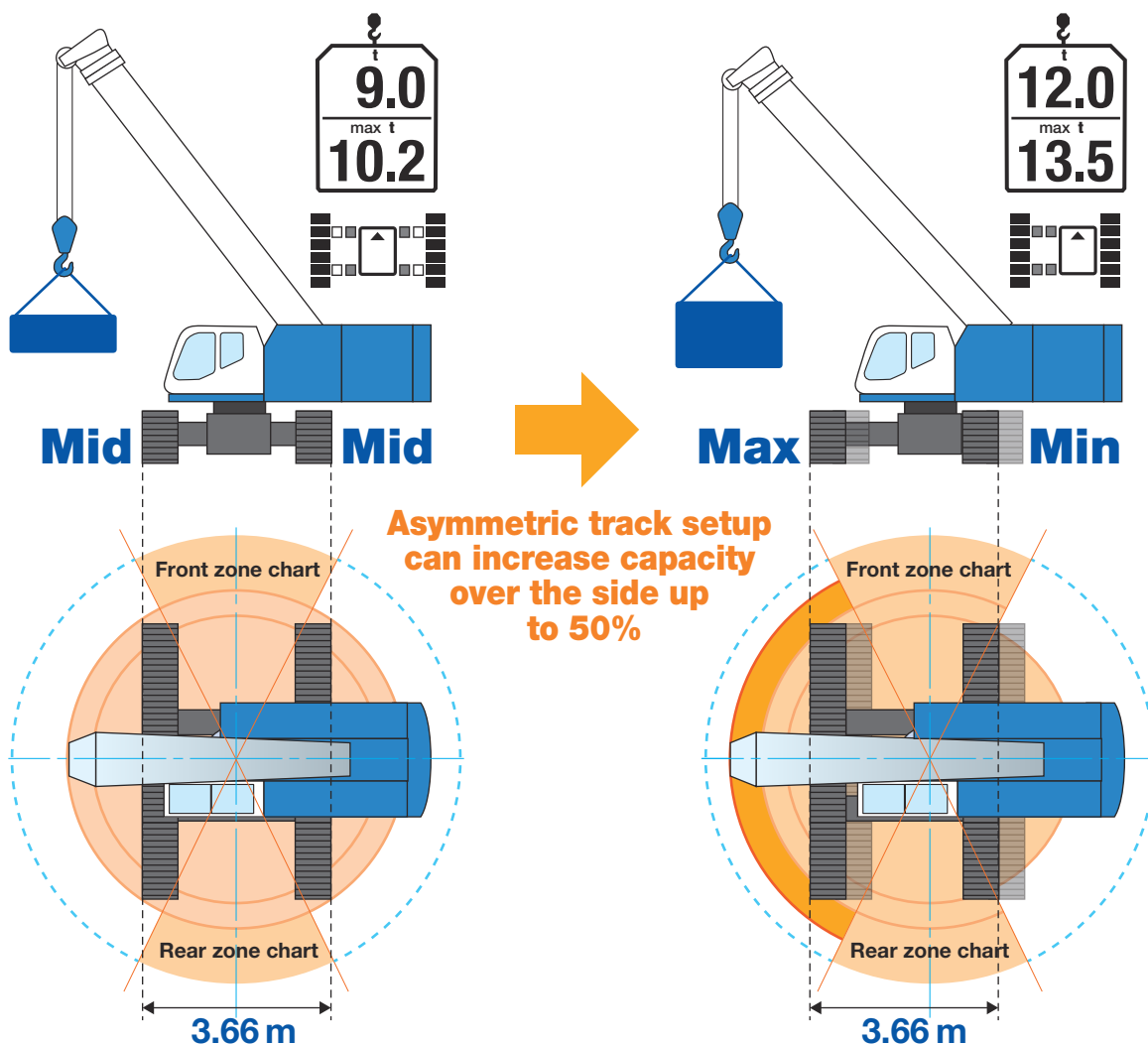


AML lamp



## OPTIMUM lifting performance at any track WIDTH!

Optimized lifting performance for reduced width configurations. Reduced width, asymmetric track setup can give significant capacity improvements when compared to symmetrical track width settings.







### Winch, Rear and Side View Color Monitor ①



Winch page, monitor display

### Load Moment Indicator [AML-C] ②



### Travel Mode ④

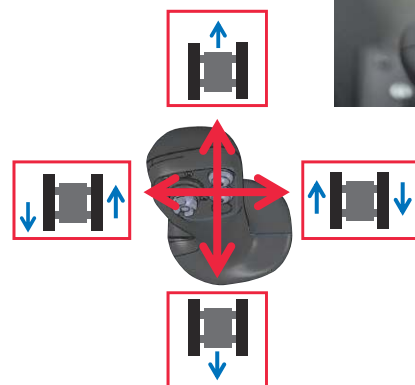
Select travel mode by either using the touch screen or pushing a button on the control screen, right joystick acts as a travel controller for improved operability.



### Maintenance Reminder Function ③



Operator can preset the maintenance reminder function on the control screen by selecting the required maintenance items and engine hours from 50 hours up to 2,000 hours.



### Compact design

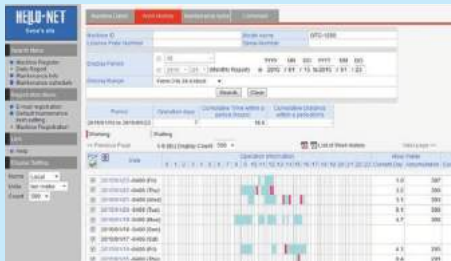
Maximize productivity on a confined job site.

The GTC-350 excels in areas with low overhead clearance, challenging access, or tight working conditions.



## Telematics with HELLO-NET System

HELLO-NET System is an Internet-based crane management system capable of simultaneously monitoring crane location and operating conditions. Service areas differ according to individual countries.



### Monitoring machine information from your computer

#### 1. Work History

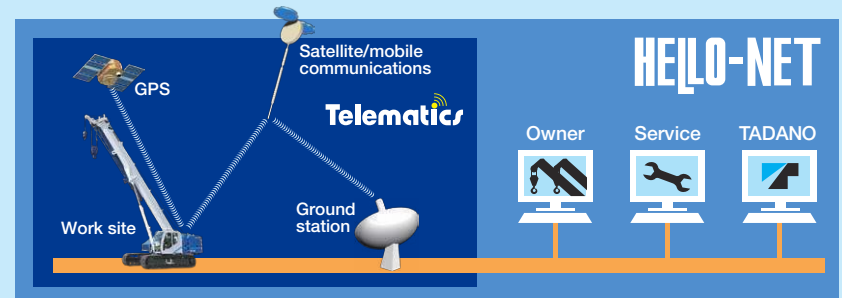
HELLO-NET Owner's Site displays the day-to-day operational status, mileage and remaining fuel for each machine equipped with a communication terminal. In addition, you can view a list displaying the number of hours of operation and the mileage of all your machines for any specified month.

#### 2. Machine Position Data

Using HELLO-NET Owner's Site, you can check a machine's latest position (up until the previous day) on a map. Two types of position data are transmitted automatically from your machine once a day. Work Site: The location where the machine engine has been activated (for one hour or more). Position at Day's End: The final location data from the GPS which was received on a given day.

#### 3. Maintenance Information

You can check the maintenance timetable of your machines for periodical replacement parts and inspection schedule. HELLO-NET supports the maintenance of your machine.



**Telematics (machine data logging and monitoring system) with HELLO-NET via internet (\*availability depends on countries).**

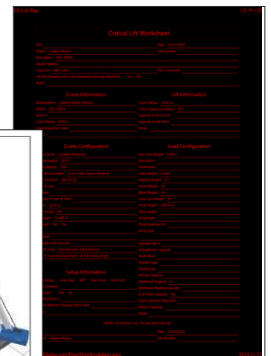
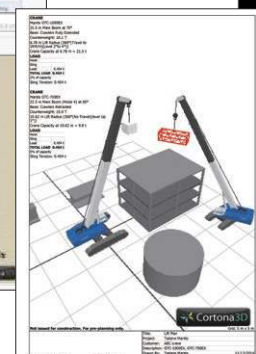
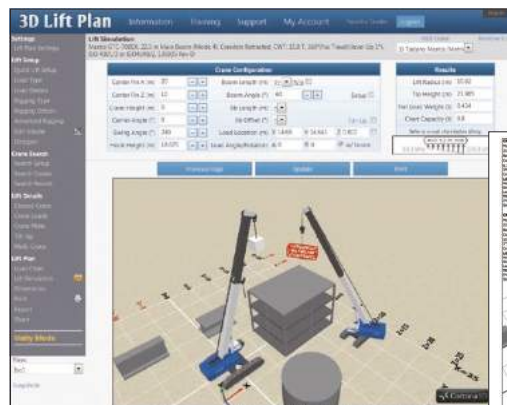
Details: The availability of data communications systems, such as satellite or mobile communications differ according to individual countries. There are some countries where the system itself is not in use. For details, please contact your distributor or our sales staff.

## 3D Lift Plan\*

Customize 3D lift simulation at your fingertips for FREE\*\*. Easy access and user friendly webpage allows you to calculate crane configurations and ground bearing pressure simultaneously. Moreover, you can print out detailed configurations and 3D graphics to further support your work preparation.

\*3D Lift Plan is a product of A1A Software LLC.

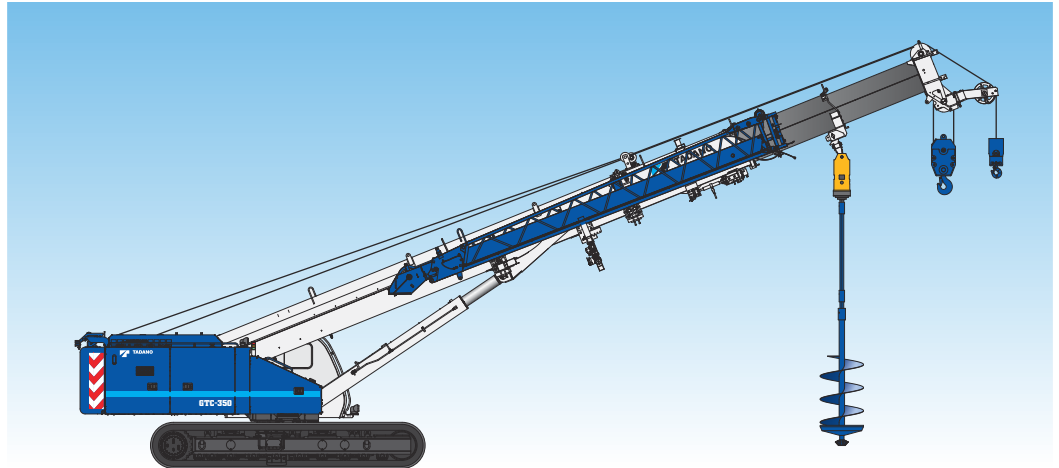
\*\*Advanced customize functions will be extra.



# Optional attachments for GTC Series

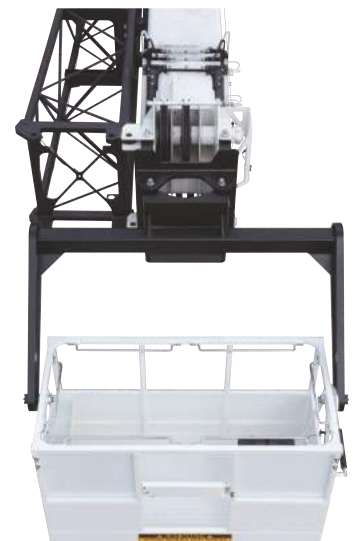
## Complete Auger Package

Includes circuit, hoses, fasteners, stowage bracket, two-speed auger motor and 2 pieces of kelly bar.



## Work Platform

Work Platform can be fitted to the boom head or first section of boom extension. Heavy duty all steel construction with non-skid floor, Self-leveling platform with position locking pin, Tool storage racks and interior handrails inside. By selecting Work Platform Chart, permissible operating range will be monitored by the load moment indicator. It also comes with DC hydraulic pump integrated into the crane system to lower and retract the boom with Work Platform to the ground in the event of main hydraulic system failure.



## Clip on Polyurethane Flat Pads



Standard,  
3-bar semi grouser shoe

Clip on polyurethane flat pads can be easily installed/removed on top of the standard 3-bar semi grouser shoes.

## Hydraulic Tool Circuit



Provides 23 L/min and 45 L/min at 176 bar through a 15.2 m twin hose reel with quick disconnect fittings.

Please contact the Tadano distributor and/or sales base for the availability in your area.



# WORK APPLICATIONS

## Powerline Transmission & Construction



## Powerline Utility





## Storage Tank Building



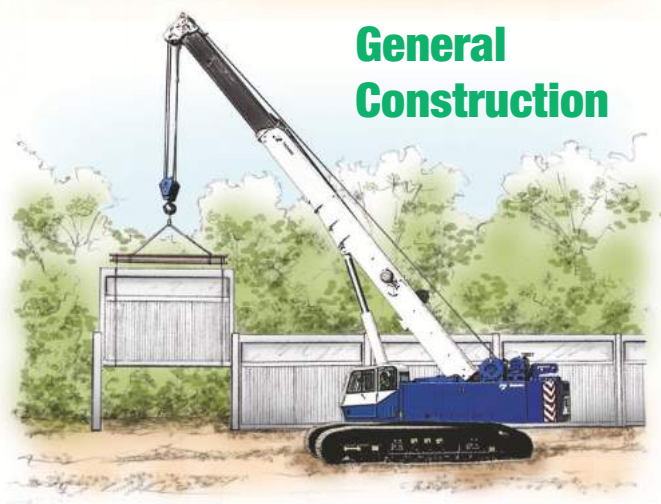
## Mining



## Pipeline Construction



## General Construction



Note: "Work platform option only available in approved markets. Please contact your Tadano representative to confirm availability."

## GTC-350

### MACHINE WEIGHTS

#### STANDARD CRANE

with 3 section- 27.2 m boom, 5,670 kg counterweight, Main winch with wire rope, and 750 mm 3-bar semi grouser track shoes

31,802 kg

### OPTIONAL EQUIPMENT

Extendable jib - 7.2 m to 12.8 m (Offset Angles 5°, 25° & 45°)

630 kg

Auxiliary Nose Sheave

44 kg

Auxiliary Winch with 91.4 m wire rope

521 kg

35 t hook block - four sheaves

420 kg

4 t overhaul ball

113 kg



#### TADANO MANTIS Corporation

1705 Columbia Avenue, Franklin, Tennessee 37064, U.S.A.  
Phone: +1-800-272-3325 Fax: +1-615-790-6803  
<http://www.mantiscranes.com/> E-mail: [tmcsales@tadano.com](mailto:tmcsales@tadano.com)

#### TADANO LTD. (International Sales Division)

4-12, Kamezawa 2-chome, Sumida-ku Tokyo 130-0014, Japan  
Phone: +81-3-3621-7750 Fax: +81-3-3621-7785  
<http://www.tadano.com/> E-mail: [info@tadano.com](mailto:info@tadano.com)

