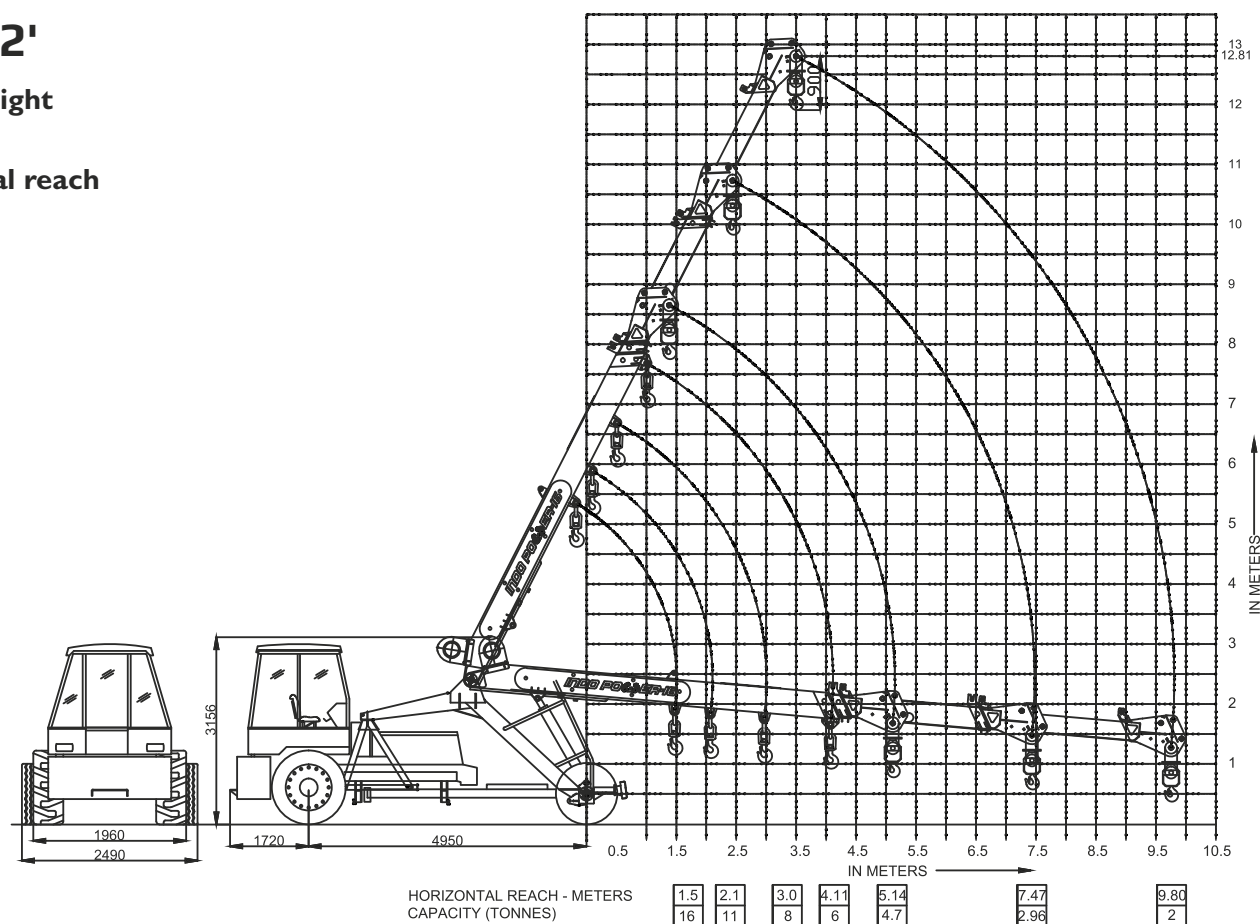


## 16T-42'

**Boom Height**  
12.81 m

**Horizontal reach**  
9.8 m

Load Chart of Indo Power 16-42'

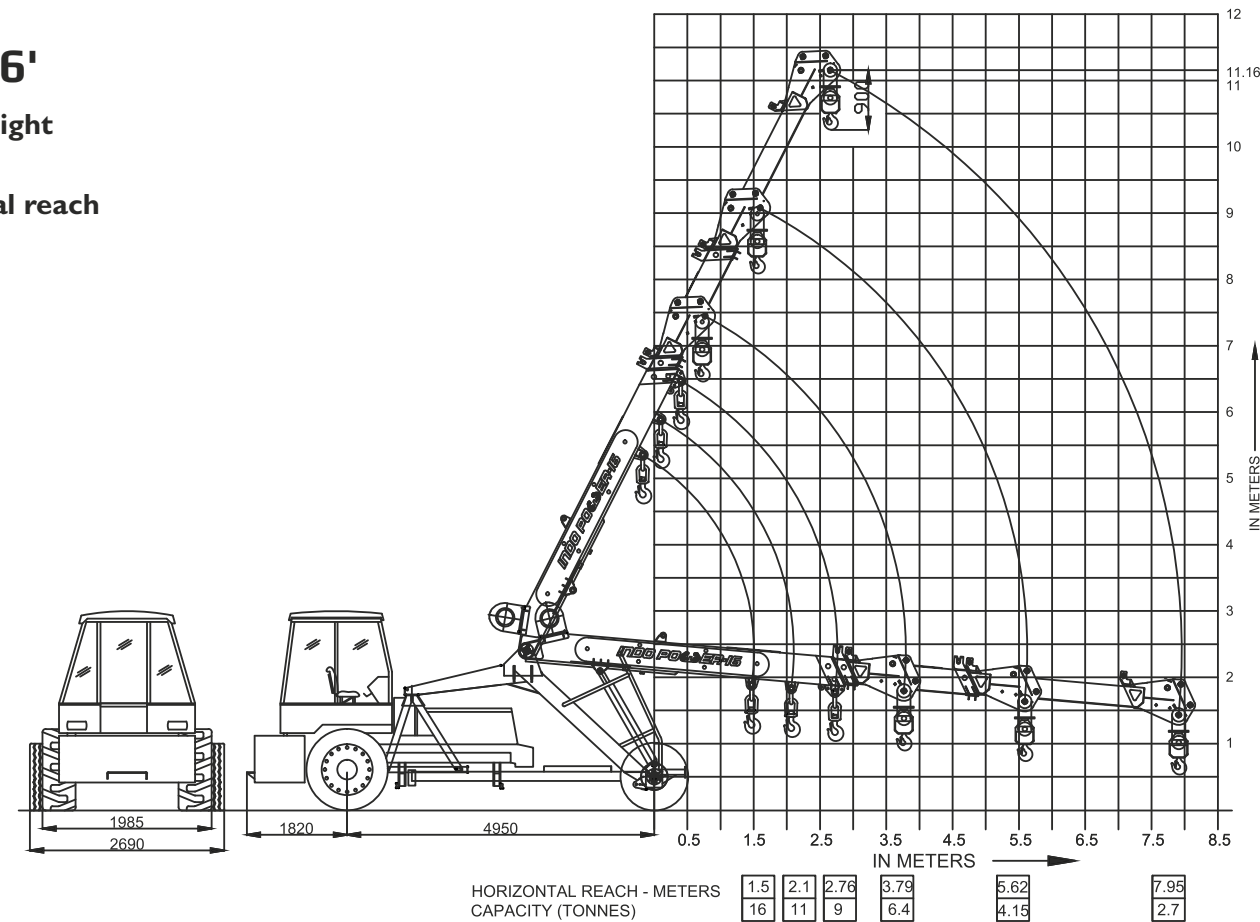


## 16T-36'

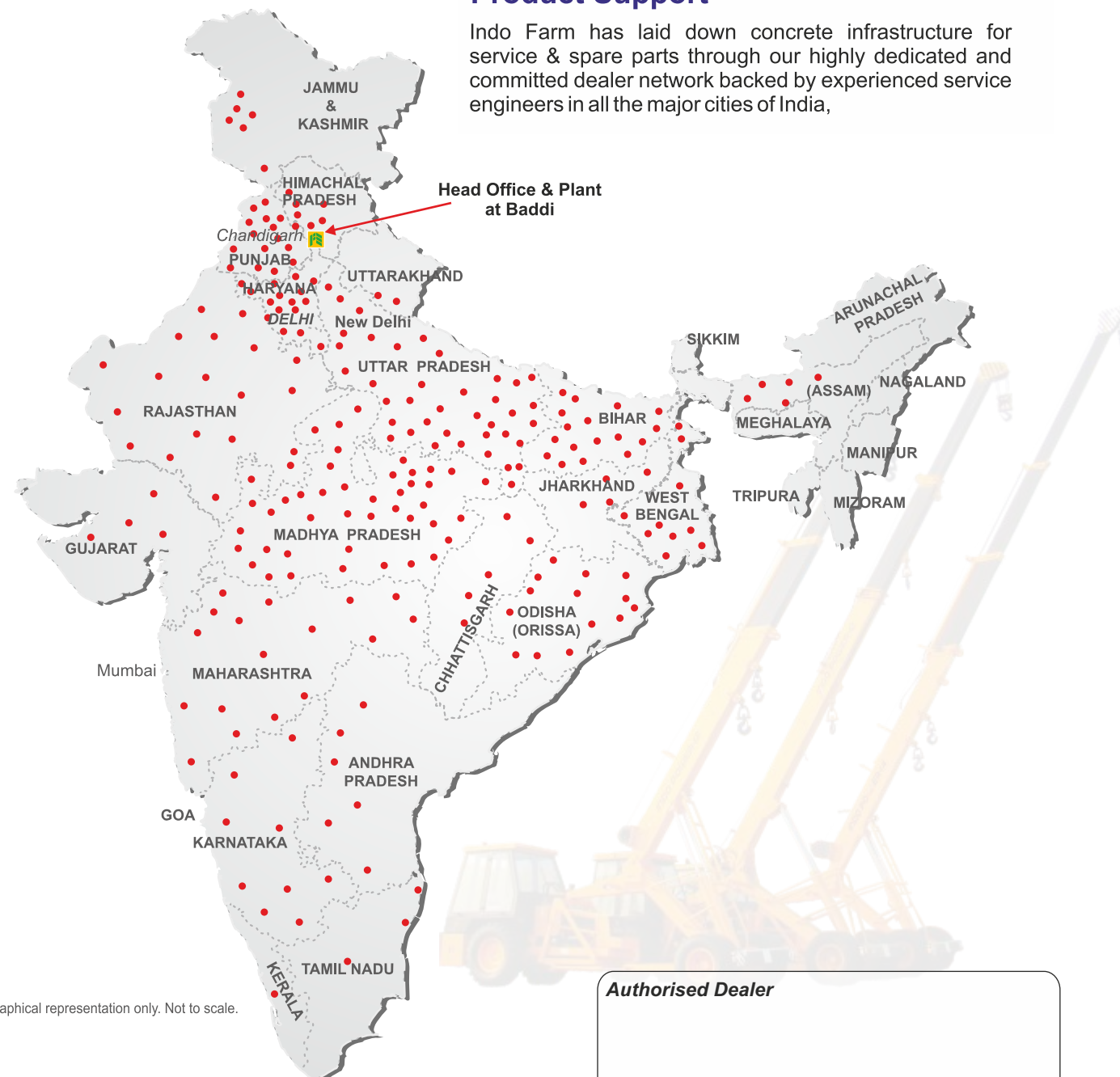
**Boom Height**  
11.16 m

**Horizontal reach**  
7.95 m

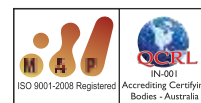
Load Chart of Indo Power 16-36'



## All India Network



**INDO FARM**  
EQUIPMENT LIMITED  
An ISO 9001:2008 Certified Company



**Head Office & Plant:**  
Export Promotion Industrial Park, Phase-II,  
Baddi-173 205, Distt. Solan, H.P. (India)  
Tel.: +91-78329-25002, Fax: +91-1795-274308-309  
Email: mail@indofarm.in, Website: www.indofarm.in

**Registered Office:**  
SCO 859, NAC Manimajra, Chandigarh-Kalka Road,  
Chandigarh - 160 101  
Tel.: +91-172-2730060, 2730059  
Fax: +91-172-2734913

## Product Range



# INDO POWER-16

THE SYMBOL OF STRENGTH

## 16T-65', 55', 42' & 36'

Pick 'N' Carry Hydraulic Mobile Crane

**Load Capacity**  
16 T

**Boom Height**  
19.81 m, 16.76 m, 12.81 m, 11.16 m

**Horizontal reach**  
17.17 m, 13.7 m, 9.8 m, 7.95 m

**Engine Power**  
60 hp@2200 rpm



Technical Specifications

	16-65'	16-55'	16-42'	16-36'
<b>ENGINE</b> Model & Type	Indo Farm - 3065 DI; Four Cylinder;Water Cooled Diesel Engine Rated power 60 hp max @2200 rpm.			
<b>TRANSMISSION</b> Type	Heavy duty transmission for crane application. Sliding mesh Spur teeth gearbox, Eight forward and two reverse speeds with high and low selector.			
Speed (Top)	30 kmph.			
Clutch	Single plate,heavy duty dry friction type clutch plate especially designed for crane application.			
<b>STEERING</b> Type	Articulated power steering,hydraulically controlled through two double acting hydraulic cylinders.			
Articulation	upto 53°			
Turning Radius	6.5 m			
<b>OPERATING TIMING</b>				
Steering (lock to lock)	9-11 Sec	9-11 Secs	9-11 Secs	9-11 Secs
Boom Raising	18-20 Secs	18-20 Secs	18-20 Secs	18-20 Secs
Boom Lowering	13-15 Secs	13-15 Secs	13-15 Secs	13-15 Secs
Telescoping Extension in	17-20 Secs	16-18 Secs	16-18 Secs	15-18 Secs
Telescoping Extension out	34-37 Secs	21-23 Secs	21-23 Secs	19-21 Secs
Hoist Line Speed	55 m/min. (Single Line)	55 m/min. (Single Line)	55 m/min. (Single Line)	55 m/min. (Single Line)
<b>BRAKES</b> Front wheel	Fully air operated 'S' cam dual circuit brakes.			
Rear wheel	Mechanical disc brakes, actuated through pneumatic brake chamber.			
Parking	Air operated fail safe brakes on front wheels.			
<b>TRACKS</b> Front	2080 mm (center of twin wheels)			
Rear	1630 mm (center of wheels)			
<b>TYRES</b> Front	11.00x20 - 16 PR (4 Nos.)			
Rear	14.00x25 - 20 PR (2 Nos.)			
<b>BOOM</b> Telescoping	4 part, 2nd & 3rd parts are actuated by hydraulic cylinders and 4th part by hydraulic assisted rope.		3 part, box type hydraulically operated.	
Derricking	Through two double acting cylinders.		Through two double acting cylinders.	
<b>HOIST MECHANISM</b> Hoist	Six falls with fail safe brake.			
<b>HYDRAULIC SYSTEM</b> Pump	Vane type hydraulic pump.			
Control Valve	4 spool control valve with built in pressure relief valve for trouble free operation.			
Hydraulic Filter	Suction line has a 100 mesh inline strainer while return line has 25 micron full flow filter.			
<b>ELECTRICAL SYSTEM</b> Type	12V Single battery negative earth.			
<b>CAPACITY</b> Fuel	60 Litres	60 Litres		
Hydraulic	140 Litre	120 Litre		
Engine oil	12 Litres	12 Litres		
Gear oil	45 Litres	45 Litres		
<b>OPERATING WEIGHT</b>	11970 Kgs	11750 Kgs	11340 Kgs	11200 Kgs

Features

- Safety**

  - Overload audio warning system
  - Safety brakes on hoist
  - Cylinder guard for protection
  - Counter balance valve on lift cylinder
- Optional Features/Accessories**

  - Steering wheel
  - Extra hooks
  - Man carrying basket
  - Fire extinguisher
  - Over hoist warning system
  - Safe load indicator with hydraulic cutoff
  - Spark arrester
- Standard Accessories**

  - Air brakes (Fail Safe)
  - Heavy duty winch - Six falls rope
  - All weather cabin
  - Reflectors
  - Turn & reverse lamp
  - Rear view mirror
  - Tool kit
  - Steering Cylinder Guard
  - Lift cylinder guard
  - Front bumper
  - Tool box



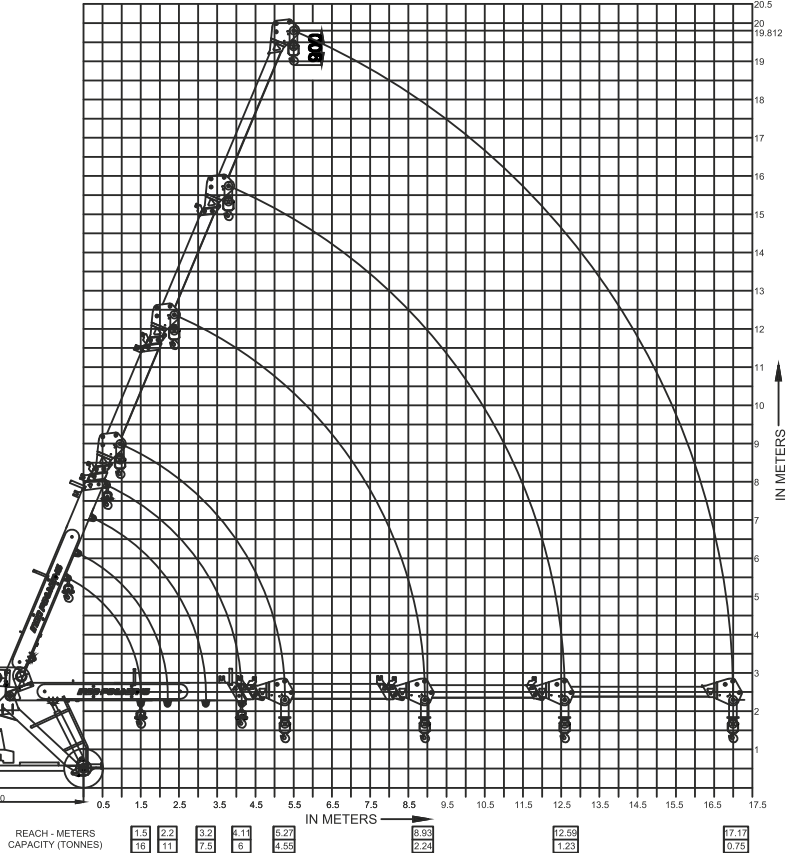
16T-65'

Boom Height  
19.81 m

Horizontal reach  
17.17 m



Load Chart of Indo Power 16-56'

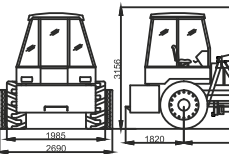


Load Chart of Indo Power 16-55'

16T-55'

Boom Height  
16.76 m

Horizontal reach  
13.7 m



Straight Rear Axle



Heavy Duty Main Frame



Heavy Duty Winch



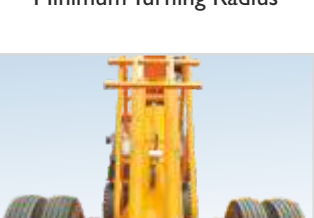
High Ground Clearance



Full Length Chassis



Minimum Turning Radius



Air Brakes