

# 4-Stage Telescopic Crane

**TX**160

A P P L I C A T I O N   &   A T T A C H M E N T

Max. Lifting Capacity : 8.0 t x 2.5 m  
Max. Working radius : 0.9 t x 13.2 m



# Powerful Crane Operation in Urban Tight Workplace, Including Underground, behind Numerous Safety Devices

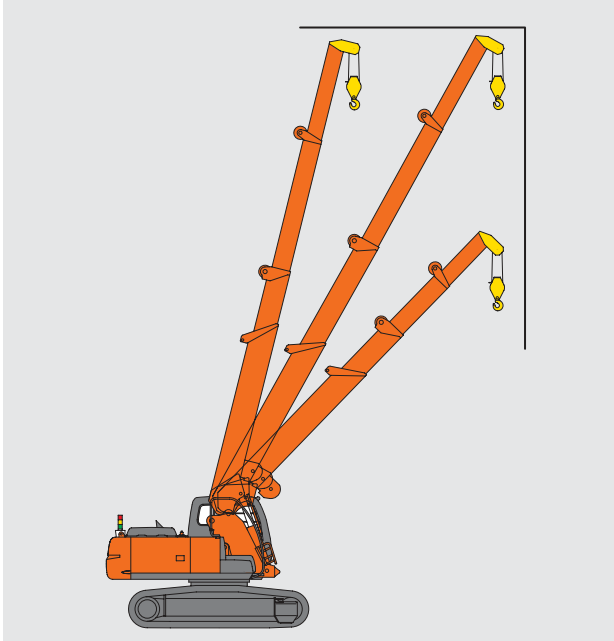
The Hitachi TX160, equipped with the robust 4-stage box-section telescopic boom, gives wide working ranges and high working stability. These features allow efficient lifting jobs in confined job sites. An array of safety devices, including the moment limiter, working range control limiter, and overhoist prevention device are provided.

### Moment Limiter



To prevent tipping due to overload, the moment limiter automatically buzzes, and stops hook hoisting, boom lowering or boom extending at the limits. The rated load, actual load, limited lifting height above ground, ground, working radius, boom length and the load ratio (that of actual load to rated load) is indicated in 10 % steps, by lamps.

### Working Range Control Limiter



The boom angles (upper and lower limits), maximum working radius and maximum lifting height can be arbitrarily set. When exceeding the setting, the boom automatically stops. This helps operations at limited working area.

### Overhoist Auto-Stop

The hook, when overhoisted, stops automatically with alarm to avoid line failure.

### Rugged Boom Construction

The telescopic boom is the box-section construction with large sectional area and high rigidity for tough crane operation.

### Ample Lift under the Ground

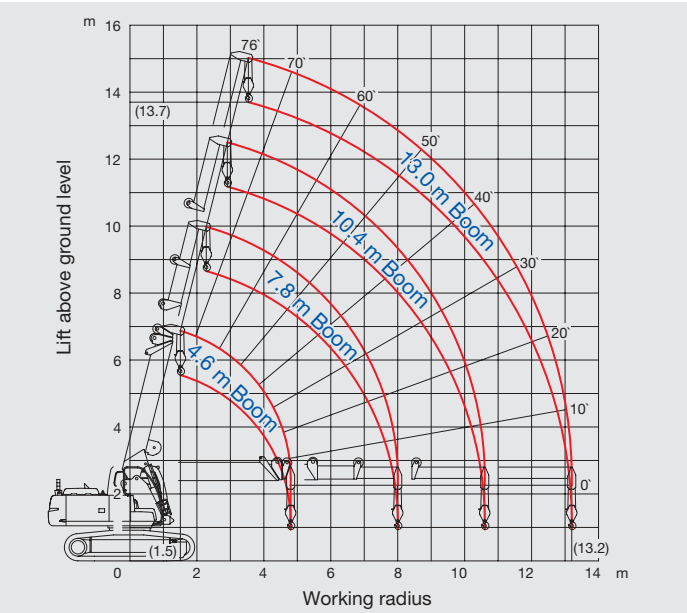
Ample drum winding capacity gives ample lifting under the ground. Two hoist line speeds – high and low – are selectable to suit jobs: high lifting, inching and much more.

Maximum lift under underground : 26.2 m  
(When using optional 160 m line) : 36.2 m



# SPECIFICATIONS

## WORKING RANGES



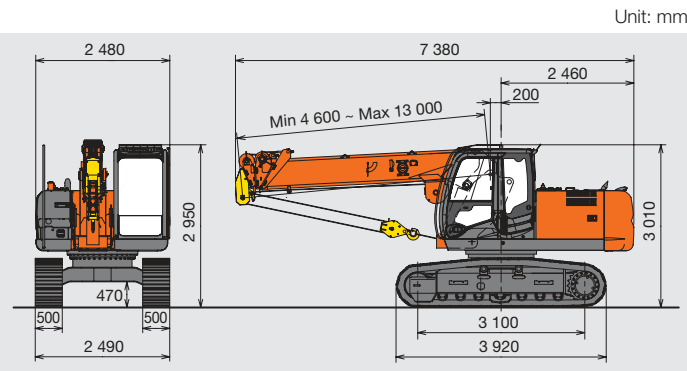
Notes: 1. This graph shows working ranges with the load, and does not include boom deflection.  
2. The crane can be operated with the load in the range of 0 degree to 76 degree.

## SPECIFICATIONS

		TX160 (Grouser shoe)
Operating weight	kg	16 600
Crane capacity		
Overall	mm	7 380
Max.lifting load x Working radius	t x m	8.0 x 2.5
Max. hook lift above ground level	m	13.7 (5 reeving)
Max. hook lift below ground level	m	18.0 (5 reeving)
		49.0 (2 reeving)*
Boom length	m	4.6 ~ 13.0
Boom raising angle	degree	-3 ~ 76
Boom raising speed	s	9.0 (-3 degree ~ 76 degree)
Boom extending speed	m/min	8.4 / 14.0
Hoisting rope speed	m/min	High : 97 / Low : 66
Hoisting rope	diameter mm/m	10 x 111
Swing speed	min <sup>-1</sup> (rpm)	2.0 (2.0)
Travel speed	km/h	3.4
Engine		
Model		Isuzu AI-4JJ1X
Rated power	kW/min <sup>-1</sup> (HP/rpm)	83 / 2 000 (112 / 2 000)

Notes: 1. Data shown above are in SI units, followed by data in conventional units in ( ).  
2. \*When hook lift becomes large, the rope is likely to be kinked.

## DIMENSION



### Gross Rated Capacity (5 and 2 reeving)

m	4.6 m Boom				7.8 m Boom				10.4 m Boom		13.0 m Boom	
	*5		*2		*5		*2		*5	*2	*5	*2
	A	B	A	B	A	B	A	B	A		A	
2.50	8 000	3 000	2 500	1 250								
2.70	7 600	3 000	2 500	1 250	7 000	3 000	2 500	1 250				
3.00	7 000	3 000	2 500	1 250	7 000	3 000	2 500	1 250				
3.50	5 500	2 750	2 500	1 250	5 500	2 750	2 500	1 250	4 900	2 500		
4.00	4 900	2 450	2 500	1 250	4 900	2 450	2 500	1 250	4 900	2 500	3 900	2 500
4.50	4 150	2 075	2 500	1 250	4 250	2 125	2 500	1 250	4 300	2 500	3 900	2 500
4.80	3 775	1 885	2 500	1 250	-	-	-	-	-	-	-	-
5.00					3 650	1 825	2 500	1 250	3 650	2 500	3 650	2 500
6.00					2 820	1 410	2 500	1 250	2 820	2 500	2 820	2 500
6.50					2 500	1 250	2 500	1 250	2 500	2 500	2 500	2 500
7.00					2 250	1 125	2 250	1 125	2 250	2 250	2 250	2 250
8.00					1 820	910	1 820	910	1 820	1 820	1 820	1 820
9.00									1 550	1 550	1 550	1 550
10.00									1 320	1 320	1 320	1 320
10.60									1 220	1 220	1 220	1 220
11.00											1 160	1 160
12.00											1 020	1 020
13.00											920	920
13.20											900	900

\*reeving  
A : at Rest B : Travel  
Notes: 1. The rated loads shown do not exceed 78% of tipping load with the machine on firm level ground. Forward stability is 1.15 or more.  
2. The load to be actually lifted is the listed total load minus sling fittings such as hook. (8.0 t hook: 75 kg / 1.2 t hook : 20 kg)  
3. Working radius m x Gross rated capacity kg.

### Gross Rated Capacity (1 reeving)

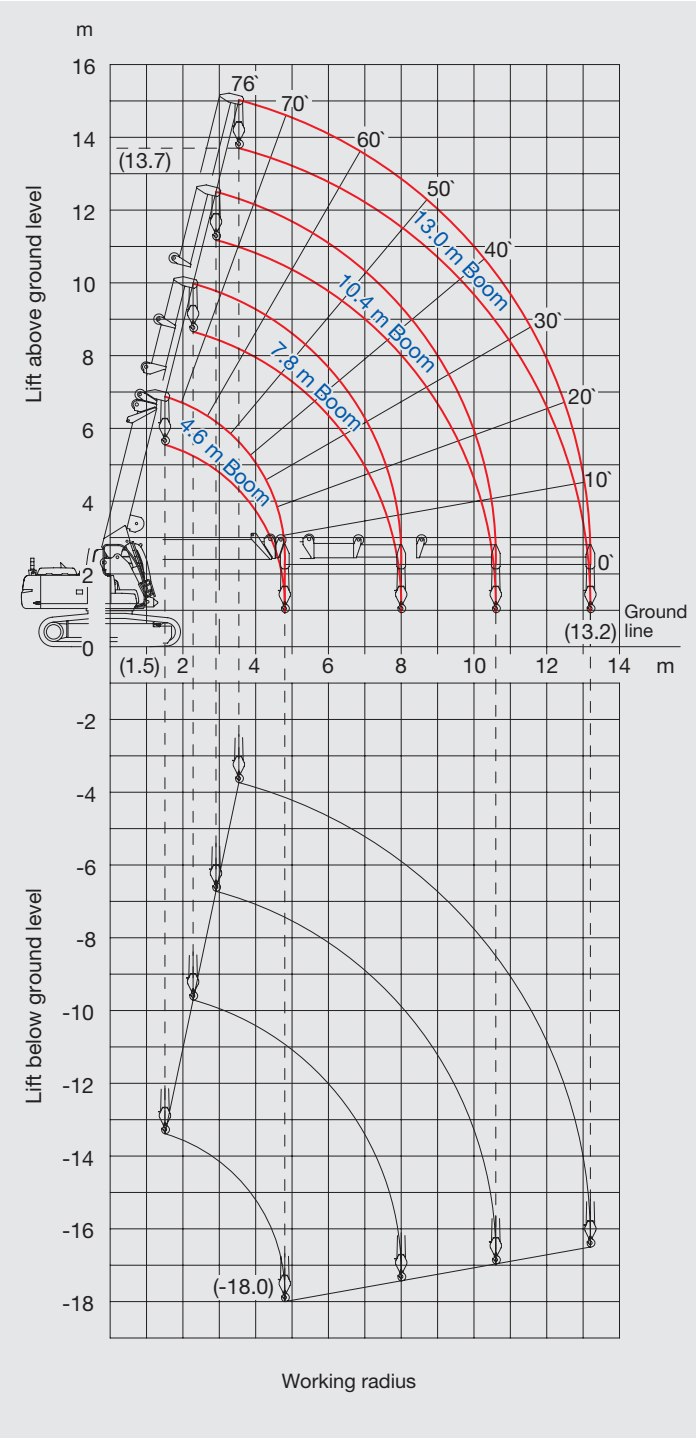
m	4.6 m Boom		7.8 m Boom		10.4 m Boom	13.0 m Boom
	A	B	A	B	A	A
2.50	1 200	600				
2.70	1 200	600	1 200	600		
3.00	1 200	600	1 200	600	1 200	
3.50	1 200	600	1 200	600	1 200	1 200
4.00	1 200	600	1 200	600	1 200	1 200
4.50	1 200	600	1 200	600	1 200	1 200
4.80	1 200	600	-	-	-	-
5.00			1 200	600	1 200	1 200
6.00			1 200	600	1 200	1 200
6.50			1 200	600	1 200	1 200
7.00			1 200	600	1 200	1 200
8.00					1 200	1 200
9.00					1 200	1 200
10.00					1 200	1 200
10.60					1 200	1 200
11.00						1 160
12.00						1 020
13.00						920
13.20						900

A : at Rest B : Travel  
Notes: 1. The rated loads shown do not exceed 78% of tipping load with the machine on firm level ground. Forward stability is 1.15 or more.  
2. The load to be actually lifted is the listed total load minus sling fittings such as hook. (8.0 t hook: 75 kg / 1.2 t hook : 20 kg)  
3. Working radius m x Gross rated capacity kg.

# SPECIFICATIONS

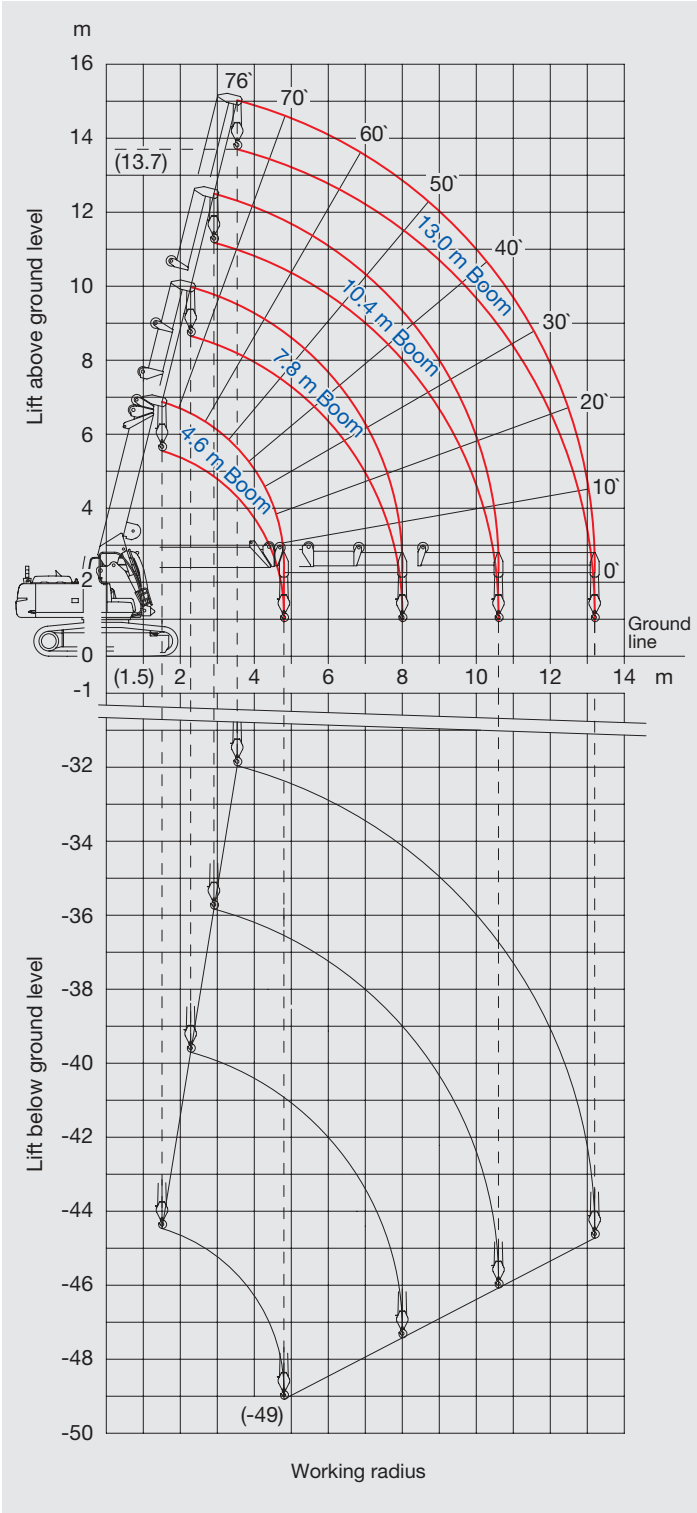
## WORKING RANGES

Lifting Height Below Ground : 5 reeving



Notes: 1. This graph shows working ranges with the load, and does not include boom deflection.  
2. The crane can be operated with the load in the range of 0 degree to 76 degree.

Lifting Height Below Ground : 2 reeving



These specifications are subject to change without notice.  
Illustrations and photos show the standard models, and may or may not include optional equipment, accessories, and all standard equipment with some differences in colour and features.  
Before use, read and understand the Operator's Manual for proper operation.