

GR-1100EX

110 METRIC TONS CAPACITY

**Longer Rounded Boom
and Compact Carrier**

**New
110t
model**

Compact carrier

The GR-1100EX has a compact carrier whose size is almost the same as Tadano's GR-800EX. This compactness provides high maneuverability and easy transportability.



Overall length:
approx. 14,450 mm

Overall width:
approx. 3,315 mm

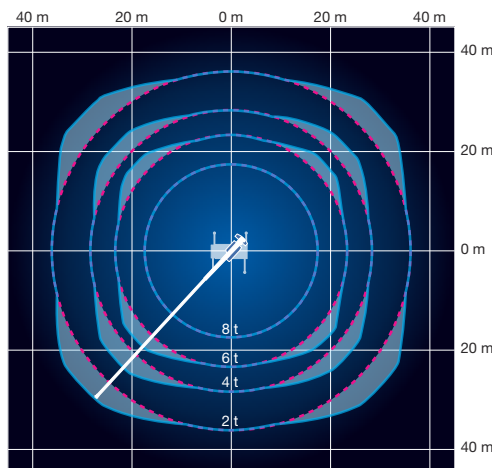
Overall height:
approx. 3,795 mm

Carrier length: **8,580 mm**



Smart Chart system

Tadano's newly developed Smart Chart taps the potential of a crane by expanding the conventional circular working area into a square one, improving work safety and efficiency.



Max. lifting height:

56.1 m
[Boom only]

73.6 m
[Boom + Jib]

Max. working radius:

44.0 m
[Boom only]

48.3 m
[Boom + Jib]

-1.5° – 81.0°



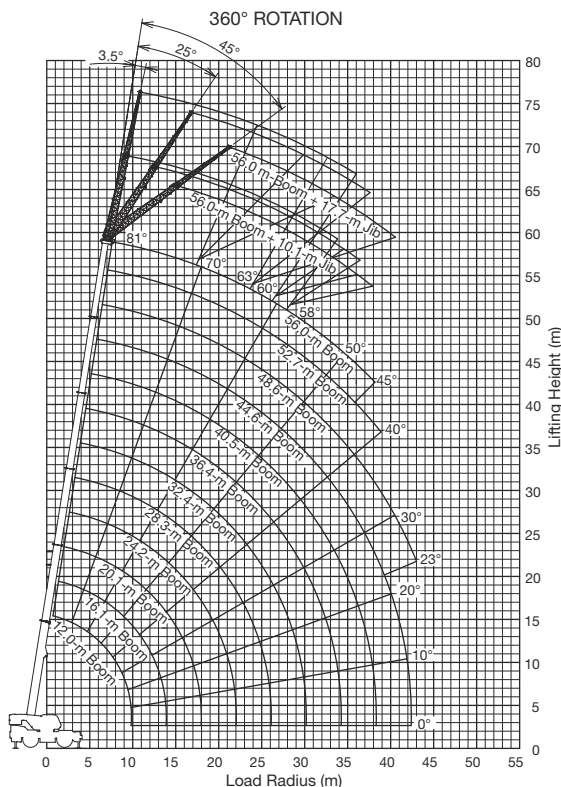
MODEL: GR-1100EX

SPECIFICATIONS

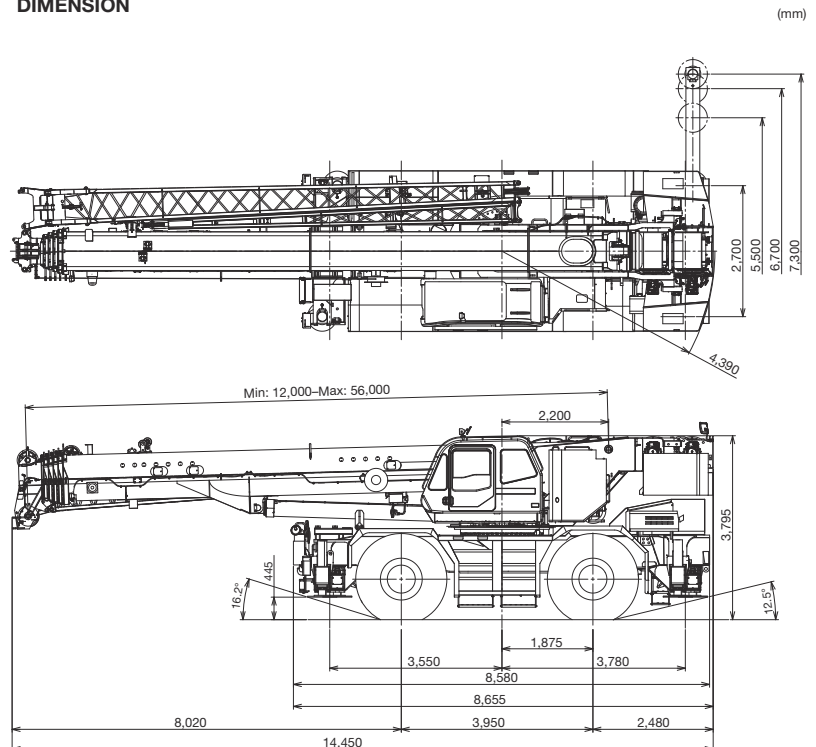
MAXIMUM CAPACITY	110,000 kg at 2.5 m
PERFORMANCE	
Max. traveling speed	19 km/h
Gradeability (tan θ)	84% (at stall), 30%*
	* Machine should be operated within limit of engine crackcase design. (17°: MITSUBISHI 6M60-TLU3R)
WEIGHT	
Gross vehicle mass	55,474 kg
-1st axle	27,775 kg
-2nd axle	27,699 kg
MIN. TURNING RADIUS	2-wheel steer: 11.9 m 4-wheel steer: 6.8 m (at center of extreme outer tire)
BOOM	
Fully retracted length	12.0 m
Fully extended length	56.0 m
Extension speed	44.0 m in 340 s
Angle	-1.5°-81°
Elevation speed	20° to 60° in 40 s
JIB	
	2 stage bi-fold lattice type; Single sheave at the head of both jib sections.
Offset	3.5°, 25° or 45°
Length	10.1 m, 17.7 m
MAIN WINCH	
	Variable speed type with grooved drum driven by hydraulic axial piston motor.
Single line pull	9,900 kgf
Single line speed	136 m/min. (at the 4th layer)
Wire rope	19 mm x 235 m (Diameter x length)
AUXILIARY WINCH	
	Variable speed type with grooved drum driven by hydraulic axial piston motor.
Single line pull	9,900 kgf
Single line speed	117 m/min. (at the 2nd layer)
Wire rope	19 mm x 158 m (Diameter x length)
SLEWING	
Slewing speed	1.5 min ⁻¹ {rpm}
Tail slewing radius	4,390 mm
HYDRAULIC SYSTEM	
	Pumps... 2 variable piston pumps for crane functions. Tandem gear pump for steering, slewing and optional equipment.
	Control valves... Multiple valves actuated by pilot pressure with integral pressure relief valves.
	Reservoir... 763 lit. capacity. External sight level gauge.
	Oil cooler... Air cooled fan type.

TADANO Automatic Moment limiter (TADANO AML-C)	Following information is displayed: • Control lever lockout function with audible and visual pre-warning • Boom position indicator • Outtrigger state indicator • Boom angle / boom length / jib offset angle / jib length / load radius / rated lifting capacities / actual loads read out • Ratio of actual load moment to rated load moment indication • Automatic speed reduction and slow stop function on boom elevation and slewing • Working condition register switch • Load radius / boom angle / tip height / slewing range preset function • External warning lamp • Tare function • Fuel consumption monitor • Main winch / auxiliary winch select • Drum rotation indicator (audible and visible type) main and auxiliary winch
OUTRIGGERS	4 hydraulic, beam and jack outriggers. Vertical jack cylinders equipped with integral holding valve. Each outrigger beam and jack is controlled independently from cab.
Extension width	Max. ... 7,300 mm, Mid. ... 5,500 mm & 6,700 mm, Min. ... 2,700 mm, Float size (Diameter)... 600 mm
CARRIER	Rear engine, left-hand steering, driving axle 2-way selected type by manual switch. 4 x 2 front drive, 4 x 4 front and rear drive.
ENGINE	Model... MITSUBISHI 6M60-TLU3R Type... 4-cycle, turbo charged and after cooled, direct injection diesel. Piston displacement ... 7.54 liters Bore x stroke... 118 mm x 115 mm Max. output... Gross 200 kW at 2,600 min ⁻¹ {rpm} Max. torque... 785 N·m at 1,400 min ⁻¹ {rpm}
TRANSMISSION	Electronically controlled full automatic transmission.
STEERING	Hydraulic power steering controlled by steering wheel. 4 steering modes available: 2-wheel front, 2-wheel rear, 4-wheel coordinated and 4 wheel crab
SUSPENSION	Front: Rigid mounted to frame. Rear : Pivot mounted with hydraulic lockout device.
TIRES	29.5-25 34PR (OR)
FUEL TANK CAPACITY	300 lit.

WORKING RANGE



DIMENSION



Note: Dimension is with boom angle at -1.5 degree.

Note: Some specifications are subject to change.



TADANO LTD. (International Sales Division)

4-12, Kamezawa 2-chome, Sumida-ku Tokyo 130-0014, Japan

Phone: +81-3-3621-7750 Fax: +81-3-3621-7785

http://www.tadano.com/ E-mail: info@tadano.com

