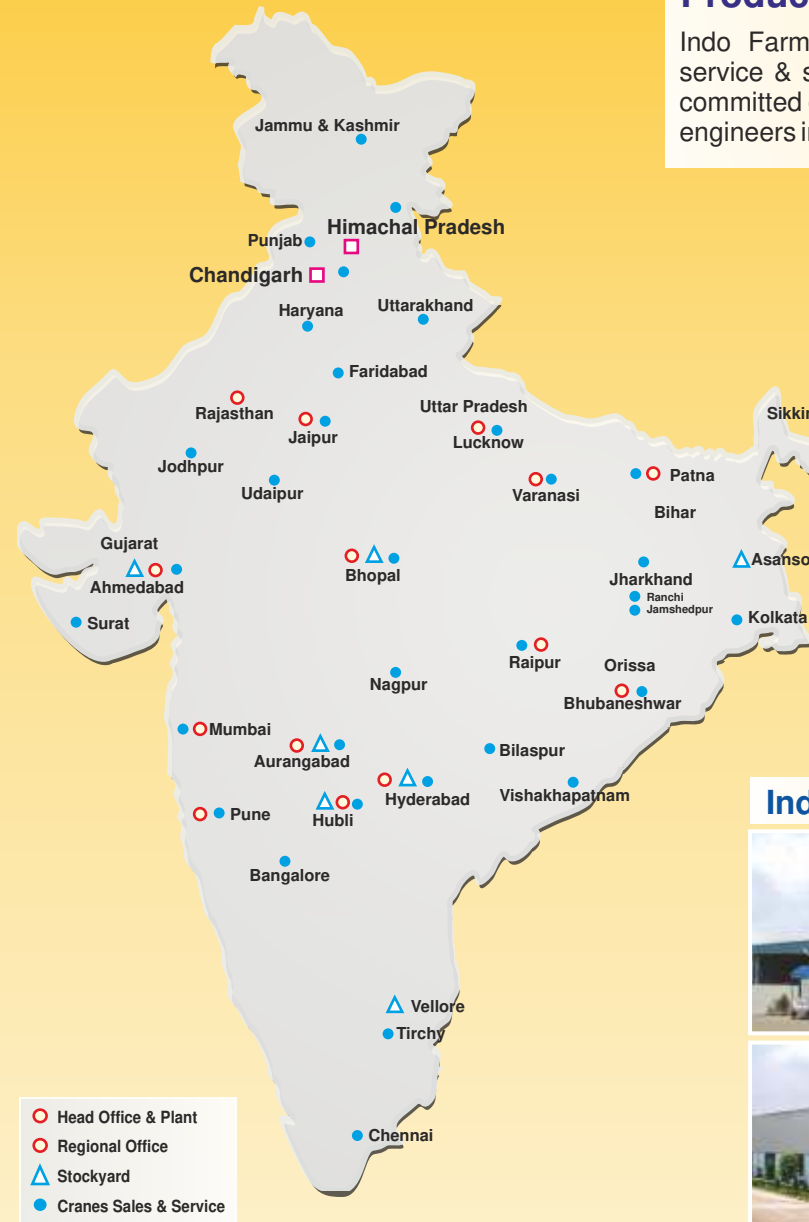


Product Range



All India Network



*Map for graphical representation only. Not to scale.

INDO FARM
EQUIPMENT LIMITED
An ISO 9001:2008 Certified Company

Head Office & Plant :
Export Promotion Industrial Park, Phase-II,
Baddi-173 205, Distt. Solan, H.P. (India),
Tel. : +91-1795-274241 (8 Lines)
Fax : +91-1795-274308-309
Email : mail@indofarm.in
Website : www.indofarm.in

Registered Office :
SCO 859, NAC Manimajra,
Chandigarh-Kalka Road,
Chandigarh-160 101
Tel. : +91-172-2730060, 2730059
Fax : +91-172-2734913

Product Support

Indo Farm has laid down concrete infrastructure for service & spare parts through our highly dedicated and committed dealer network backed by experienced service engineers in all the major cities of India,

Indo Farm Plant



Authorised Dealer

INDO POWER-20

The Symbol of Strength

Pick 'N' Carry Hydraulic Mobile Crane

20T 61' (Std)

Load Capacity

20 T

Boom Height

18.7 m

Horizontal reach

15.7 m

Engine Power

65 hp@2200 rpm



INDO FARM
EQUIPMENT LIMITED
An ISO 9001:2008 Certified Company

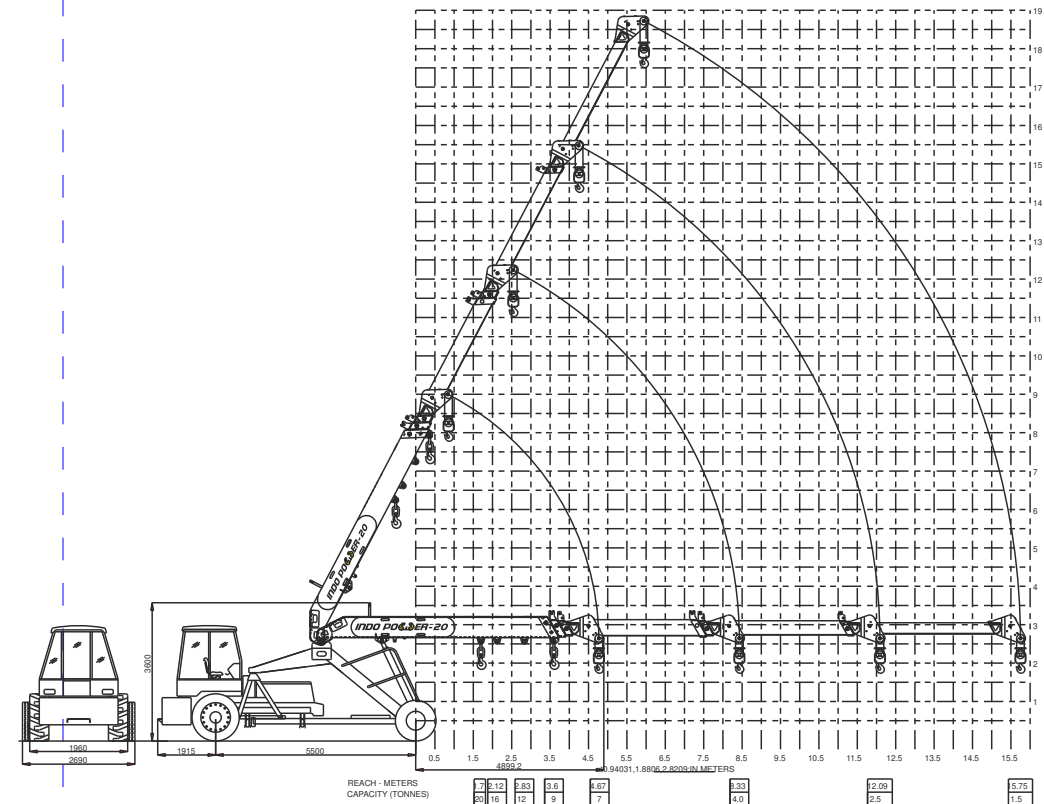


Technical Specifications

Engine	
Model & Type	Indo Farm 3070 DI; Four Cylinder, Water Cooled Diesel Engine Rated power 65 hp (Maximum)@ 2200 rpm.
Transmission	
Type	Heavy duty transmission for crane application. Sliding Mesh, spur teeth gearbox, Eight forward and two reverse speeds with high and low selector.
Speed (Top)	30 kmph.
Clutch	Single plate, heavy duty dry friction type clutch plate especially designed for crane application.
Steering	
Type	Articulated power steering, hydraulically controlled through two double acting hydraulic cylinders.
Articulation	upto 53°
Turning Radius	7.2m
Operational Timing	
Steering (lock to lock)	6-9 Secs
Boom Raising	22-25 Secs
Boom Lowering	13-16 Secs
Telescoping Extension in	13-16 Secs
Telescoping Extension out	26-29 Secs
Hoist Line Speed	55 m/min. (Single line)
Brakes	
Front Wheel	Fully air operated 'S' cam dual circuit brakes.
Rear Wheel	Mechanical wet disc brakes, actuated through pneumatic brake chamber.
Parking	Air operated fail safe brakes on front & rear wheels.
Tracks	
Front	2105 mm (center of twin wheels)
Rear	1630 mm (center of wheels)
Tyres	
Front	12.00x20 - 18 PR (Four Nos.)
Rear	14.00x25 - 20 PR (Two Nos.)
Boom	
Telescoping	Four part, 2nd & 3rd parts are actuated by hydraulic cylinders and 4th part by rope mechanism.
Derricking	Through two double acting cylinders.
Hoist Mechanism	
Hoist	<ul style="list-style-type: none"> Six falls. Fail-safe brakes.

The information in this brochure is intended to be general nature only. We reserve the right to change the specifications without notice.

Hydraulic System	
Pump	Vane/Gear type hydraulic pump.
Control Valve	4 spool control valve with built in pressure relief valve for trouble free operation.
Hydraulic Filter	Suction line has a 100 mesh inline strainer while return line has 25 micron full flow filter.
Electrical System	
Type	12V Single battery, Negative earth.
Capacity	
Fuel	60 Liters
Hydraulic	155 Liters
Engine Oil	12.5 Liters
Gear Oil	45 Liters
Operating weight	15300 Kg
Safety System	
	<ul style="list-style-type: none"> Overload audio warning system Safety brakes on hoist Cylinder guard for protection Counter balance valve on lift cylinder
Standard Accessories	
<ul style="list-style-type: none"> All weather cabin Reflectors Rear view mirror Tool kit 	<ul style="list-style-type: none"> Front bumper Lift cylinder guard Turn & reverse lamp Steering Cylinder Guard
Optional Features/Accessories	
<ul style="list-style-type: none"> Steering wheel Man carrying basket Spark arrester 	<ul style="list-style-type: none"> Extra hooks Fire extinguisher Over hoist warning system



Straight Rear Axle



Heavy Duty Main Frame



Heavy Duty Winch



Full Length Chassis



Minimum Turning Radius



High Ground Clearance

Features

- 4-Part telescopic boom.
- Aesthetically design spacious cabin with ergonomic controls for ease of operation and visibility.
- Robust chassis for more reliability.
- Steering cylinders of 880 mm stroke to ensure proper steering even in loose, sandy & rocky terrains.
- Heavy duty transmission.
- Top traveling speed of 30 kmph for faster inter-site movements.
- Heavy duty hydraulic winch with integrated safety brakes.
- High ground clearance.



Air Brakes