

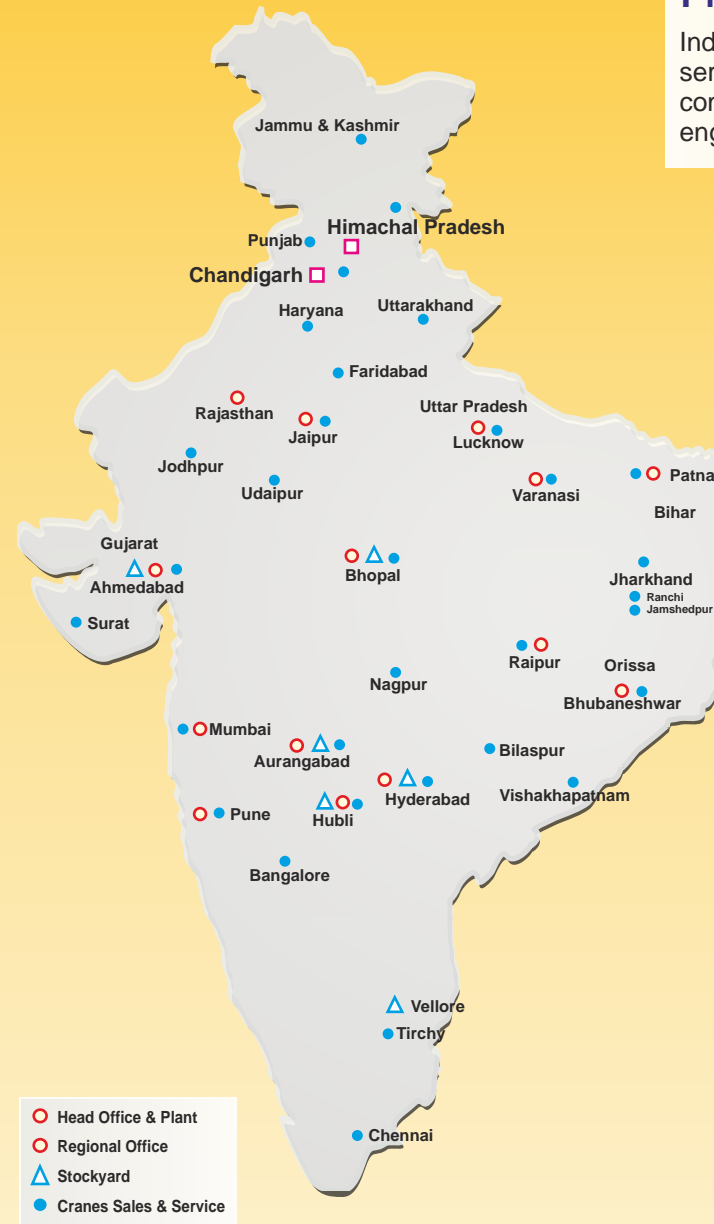
## Product Range



# INDO POWER-14

The Symbol of Strength

## All India Network



## Product Support

Indo Farm has laid down concrete infrastructure for service & spare parts through our highly dedicated and committed dealer network backed by experienced service engineers in all the major cities of India,

## Indo Farm Plant



\*Map for graphical representation only. Not to scale.

**INDO FARM**  
EQUIPMENT LIMITED  
An ISO 9001:2008 Certified Company



**Head Office & Plant :**  
Export Promotion Industrial Park, Phase-II,  
Baddi-173 205, Distt. Solan, H.P. (India),  
Tel. : +91-1795-274241 (8 Lines)  
Fax : +91-1795-274308-309  
Email : mail@indofarm.in  
Website : www.indofarm.in

**Registered Office :**  
SCO 859, NAC Manimajra,  
Chandigarh-Kalka Road,  
Chandigarh-160 101  
Tel. : +91-172-2730060, 2730059  
Fax : +91-172-2734913

Authorised Dealer

## Pick 'N' Carry Hydraulic Mobile Crane

14T 42'/36' (Std)

Load Capacity  
14 T

Boom Height  
12.8 m (42')  
10.9 m (36')

Horizontal reach  
9.76 m (42'), 8.16 m (36')

Engine Power  
60 hp (Maximum)@2200 rpm



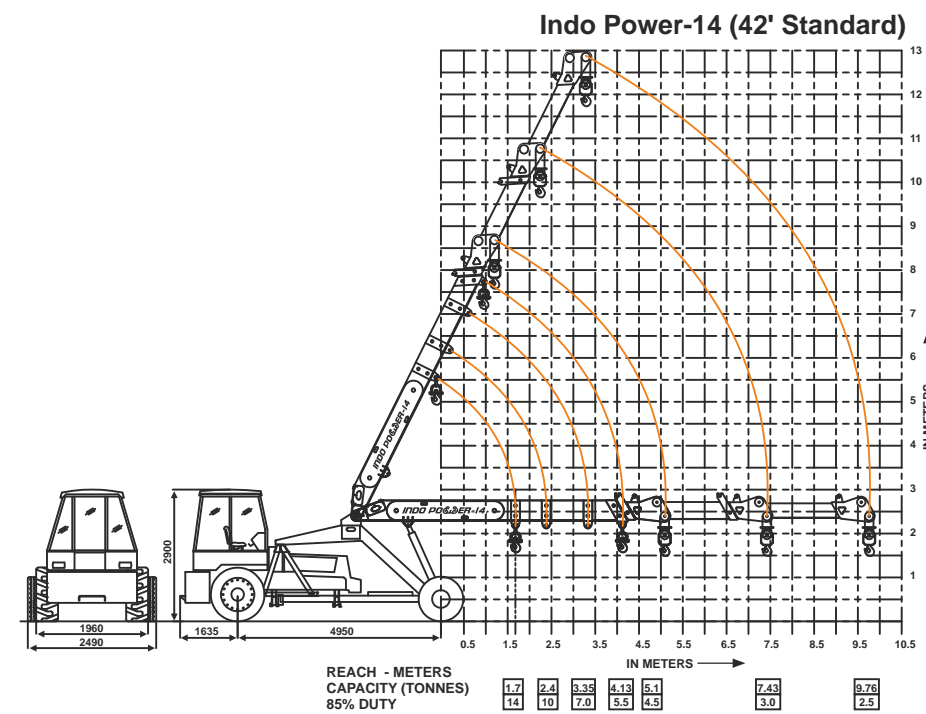
**INDO FARM**  
EQUIPMENT LIMITED  
An ISO 9001:2008 Certified Company



### Technical Specifications

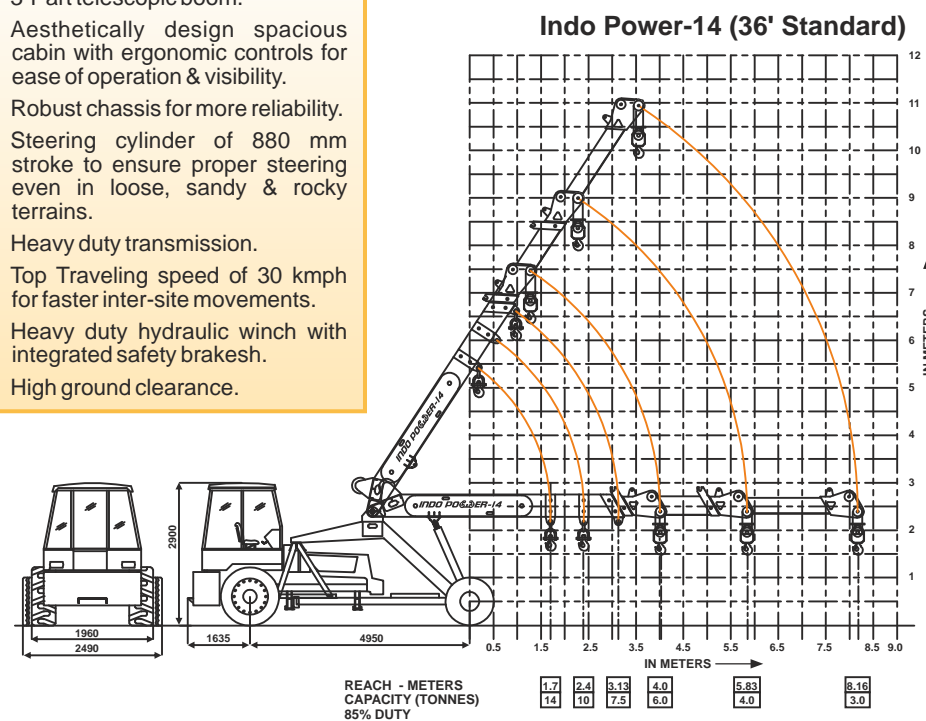
<b>Engine</b>		
Model & Type	Indo Farm 3065 DI; Four Cylinder, Water Cooled Diesel Engine Rated power 60 HP (Max.) @ 2200 rpm.	
<b>Transmission</b>		
Type	Heavy duty transmission for crane application. Sliding Mesh, spur teeth gearbox, Eight forward and two reverse speeds with high and low selector.	
Speed	Top Traveling Speed 30 kmph.	
Clutch	Single plate, heavy duty dry friction type clutch plate especially designed for crane application.	
<b>Steering</b>		
Type	Articulated power steering, hydraulically controlled through two double acting hydraulic cylinders.	
Articulation	upto 53°	
Turning Radius	6.5 m	
<b>Operational Timing</b>		
	Indo Power-14 (42')	Indo Power-14 (36')
Steering (lock to lock)	6-9 Secs	
Boom Raising	18-20 Secs	
Boom Lowering	13-15 Secs	
Telescoping Extension in	16-18 Secs	15-18 Secs
Telescoping Extension out	21-30 Secs	19-21 Secs
Hoist Line Speed	55 m/min. (Single line)	
<b>Brakes</b>		
Front Wheel	Pneumatically assisted hydraulic drum brakes.	
Rear Wheel	Mechanical disc brakes, actuated through slave cylinders.	
Parking	Mechanically actuated at rear wheels.	
<b>Tracks</b>		
Front	1930 mm (center of twin wheels)	
Rear	1630 mm (center of wheels)	
<b>Tyres</b>		
Front	11.00x20 - 16 PR (Four Nos.)	
Rear	13.00x24 - 12 PR (Two Nos.)	
<b>Boom</b>		
Telescoping	Three part, box type, hydraulically operated.	
Derricking	Through two double acting cylinders.	
<b>Hoist Mechanism</b>		
Hoist	<ul style="list-style-type: none"> <li>Four falls.</li> <li>Fail safe brakes.</li> </ul>	

<b>Hydraulic System</b>		
Pump	Vane/Gear type hydraulic pump.	
Control Valve	4 spool control valve with built in pressure relief valve for trouble free operation.	
Hydraulic Filter	Suction line has a 100 mesh inline strainer while return line has 25 micron full flow filter.	
<b>Electrical System</b>		
Type	12V Single battery, Negative earth.	
<b>Capacity</b>		
Fuel	60 Leters	
Hydraulic	130 Leters	
Engine Oil	12 Leters	
Gear Oil	45 Leters	
<b>Operating weight</b>	11500 Kg (42')	11050 Kg (36')
<b>Safety System</b>		
	<ul style="list-style-type: none"> <li>Overload audio warning system</li> <li>Safety brakes on hoist</li> <li>Cylinder guard for protection</li> <li>Hose failure protection</li> </ul>	
<b>Standard Accessories</b>		
<ul style="list-style-type: none"> <li>All weather cabin</li> <li>Reflectors</li> <li>Rear view mirror</li> <li>Tool kit</li> </ul>	<ul style="list-style-type: none"> <li>Front bumper</li> <li>Lift cylinder guard</li> <li>Turn &amp; reverse lamp</li> <li>Stg. Cylinder guard</li> </ul>	
<b>Optional Features/Accessories</b>		
<ul style="list-style-type: none"> <li>Fly jib</li> <li>Man carrying basket</li> <li>Fire extinguisher</li> <li>Six falls rope</li> <li>Air brake</li> <li>Sequence valve</li> </ul>	<ul style="list-style-type: none"> <li>Steering Wheel</li> <li>Extra hooks</li> <li>Spark arrester</li> <li>Over hoist warning system</li> <li>14.00x25 tyre</li> </ul>	



### Features

- 3-Part telescopic boom.
- Aesthetically design spacious cabin with ergonomic controls for ease of operation & visibility.
- Robust chassis for more reliability.
- Steering cylinder of 880 mm stroke to ensure proper steering even in loose, sandy & rocky terrains.
- Heavy duty transmission.
- Top Traveling speed of 30 kmph for faster inter-site movements.
- Heavy duty hydraulic winch with integrated safety brakesh.
- High ground clearance.



Straight Rear Axle



Heavy Duty Main Frame



Heavy Duty Winch



Full Length Chassis



Minimum Turning Radius



Air Brakes(Optional)



High Ground Clearance