

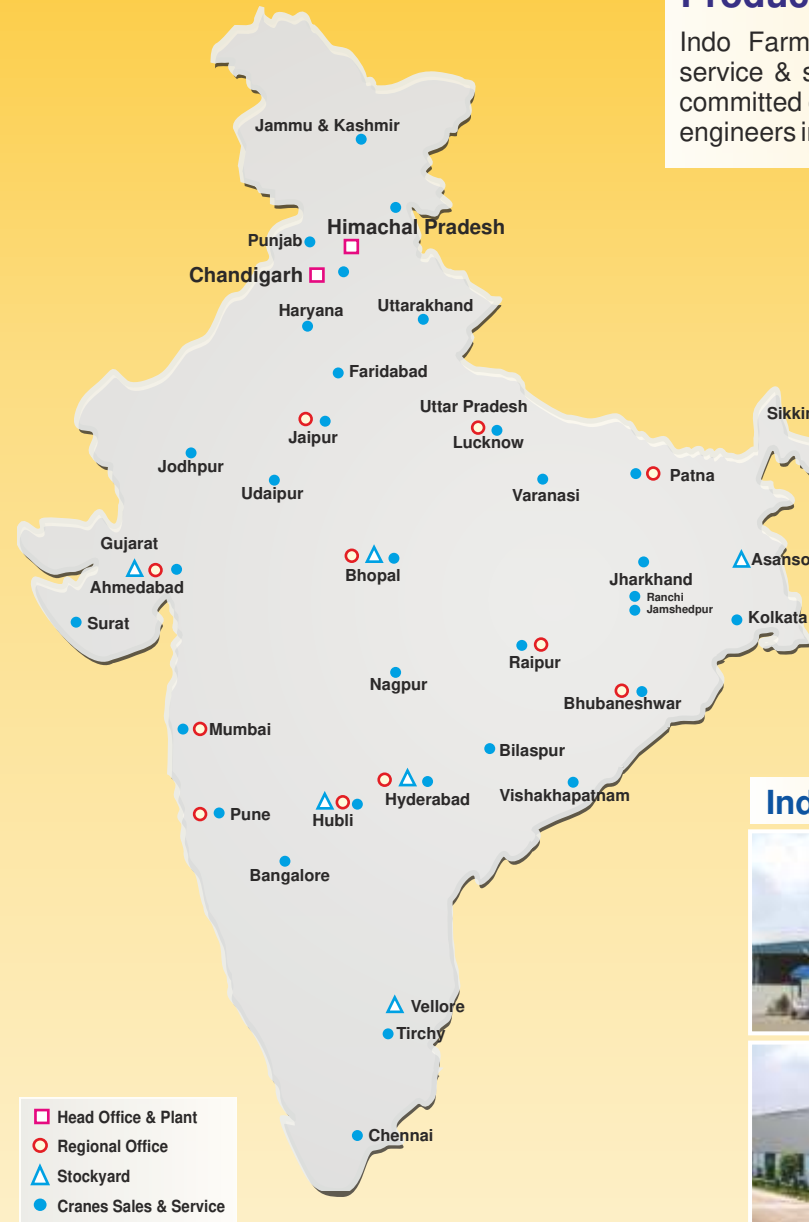
Product Range



INDO POWER-14f nx

The Symbol of Strength

All India Network



Product Support

Indo Farm has laid down concrete infrastructure for service & spare parts through our highly dedicated and committed dealer network backed by experienced service engineers in all the major cities of India,

Pick 'N' Carry Hydraulic Mobile Crane

14 FN50'
Self Rope Compensation

Load Capacity
14 T

Boom Height
15.22 m

Horizontal reach
12.8 m

Engine Power
50 hp@2200 rpm

Indo Farm Plant



Authorised Dealer

INDO FARM EQUIPMENT LIMITED
An ISO 9001:2008 Certified Company

Head Office & Plant :
Export Promotion Industrial Park, Phase-II,
Baddi-173 205, Distt. Solan, H.P. (India),
Tel. : +91-1795-274241 (8 Lines)
Fax : +91-1795-274308-309
Email : mail@indofarm.in
Website : www.indofarm.in

Registered Office :
SCO 859, NAC Manimajra,
Chandigarh-Kalka Road,
Chandigarh-160 101
Tel. : +91-172-2730060, 2730059
Fax : +91-172-2734913



INDO FARM EQUIPMENT LIMITED
An ISO 9001:2008 Certified Company



Technical Specifications

Engine	
Model & Type	Indo Farm - 3050 DI; Four Cylinder Water Cooled Diesel Engine Rated power 50 hp max@2200 rpm.
Transmission	
Type	Heavy duty transmission for crane application. Sliding mesh Spur teeth gearbox, Eight forward and two reverse speeds with high and low selector.
Axle	
Front	Rigid
Rear	Rigid Mounted
Speed (Top)	30 kmph.
Gradeability	40% unladen
Clutch	Single plate, heavy duty dry friction type clutch plate especially designed for crane application.
Drive	2 wheel drive
Steering	
Type	Articulated power steering, hydraulically controlled through two double acting hydraulic rams.
Articulation	upto 45°
Turning Radius	8 m
Brakes	
Front	Pneumatic assisted hydraulic drum brake.
Rear	Mechanical Disc Brake actuated through sleeve cylinder
Parking	Manually actuated on rear wheels
Tyres	
Front	11.00x20 - 16 PR (4 Nos.)
Rear	14.00x25 - 20 PR (2 Nos.)
Wheel Base	4.95 m
Wheel Tracks	
Front	1880 mm (center of twin wheels)
Rear	1630 mm

Boom	
Telescoping	4 part boom, 3 part hydraulically powered & fully synchronised, 4th part power extended and manually pinned for safety.
Derricking	Through two double acting cylinders.
Hoist Mechanism	
Hoist	Four falls with fail safe brake.
Hydraulic System	
Pump	Vane/Gear type hydraulic pump.
Control Valve	3 spool control valve double acting with built in pressure relief valve for trouble free operation.
Electrical System	
Type	12V, DC Single battery negative earth
Operating Weight	
12300 Kg	
Over all Dimensions	
Length	11320 mm
Width	2450 mm
Height	2990 mm

Safety

- Fail-safe brakes on hoist.
- Over hoist warning system.
- Counter balance valve for hose failure protection.
- Self adjusting hook block.

Standard Accessories

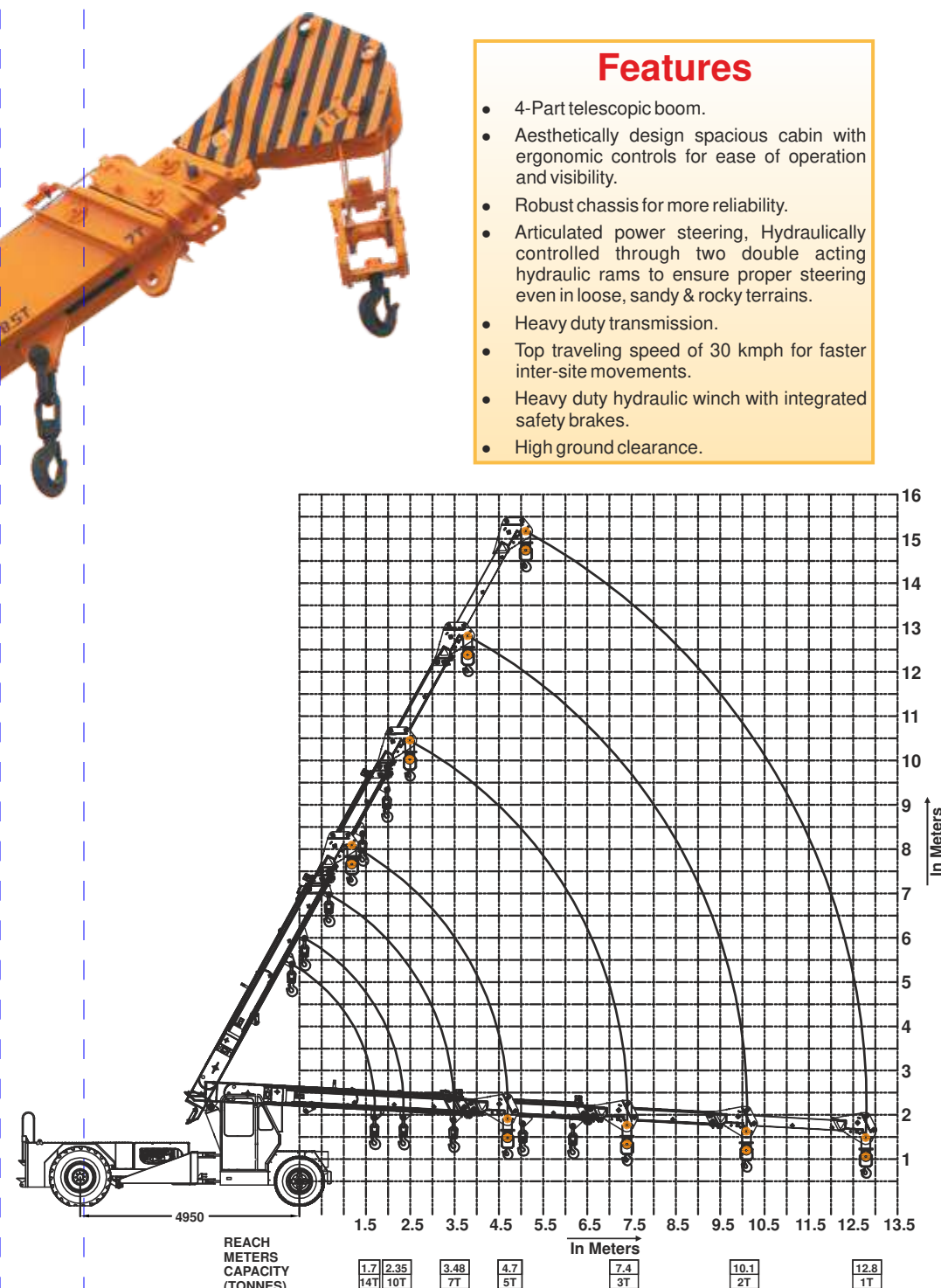
- All weather cabin
- Side view mirror Left & Right
- Tool kit
- Reflectors
- Turn & reverse lamp
- Reverse gear tuner

Optional Features/Accessories

- Man carrying basket
- Additional cabin
- Rear view camera
- Safe load indicator
- Air conditioned cabin
- Over hoist warning system
- Air Brake
- Outriggers
- Six Falls Rope

Features

- 4-Part telescopic boom.
- Aesthetically design spacious cabin with ergonomic controls for ease of operation and visibility.
- Robust chassis for more reliability.
- Articulated power steering, Hydraulically controlled through two double acting hydraulic rams to ensure proper steering even in loose, sandy & rocky terrains.
- Heavy duty transmission.
- Top traveling speed of 30 kmph for faster inter-site movements.
- Heavy duty hydraulic winch with integrated safety brakes.
- High ground clearance.



Cabin with better ergonomics



Four side more visibility cabin



Straight Rear Axle



Heavy Duty Winch



High Ground Clearance



Easy for maintenance