

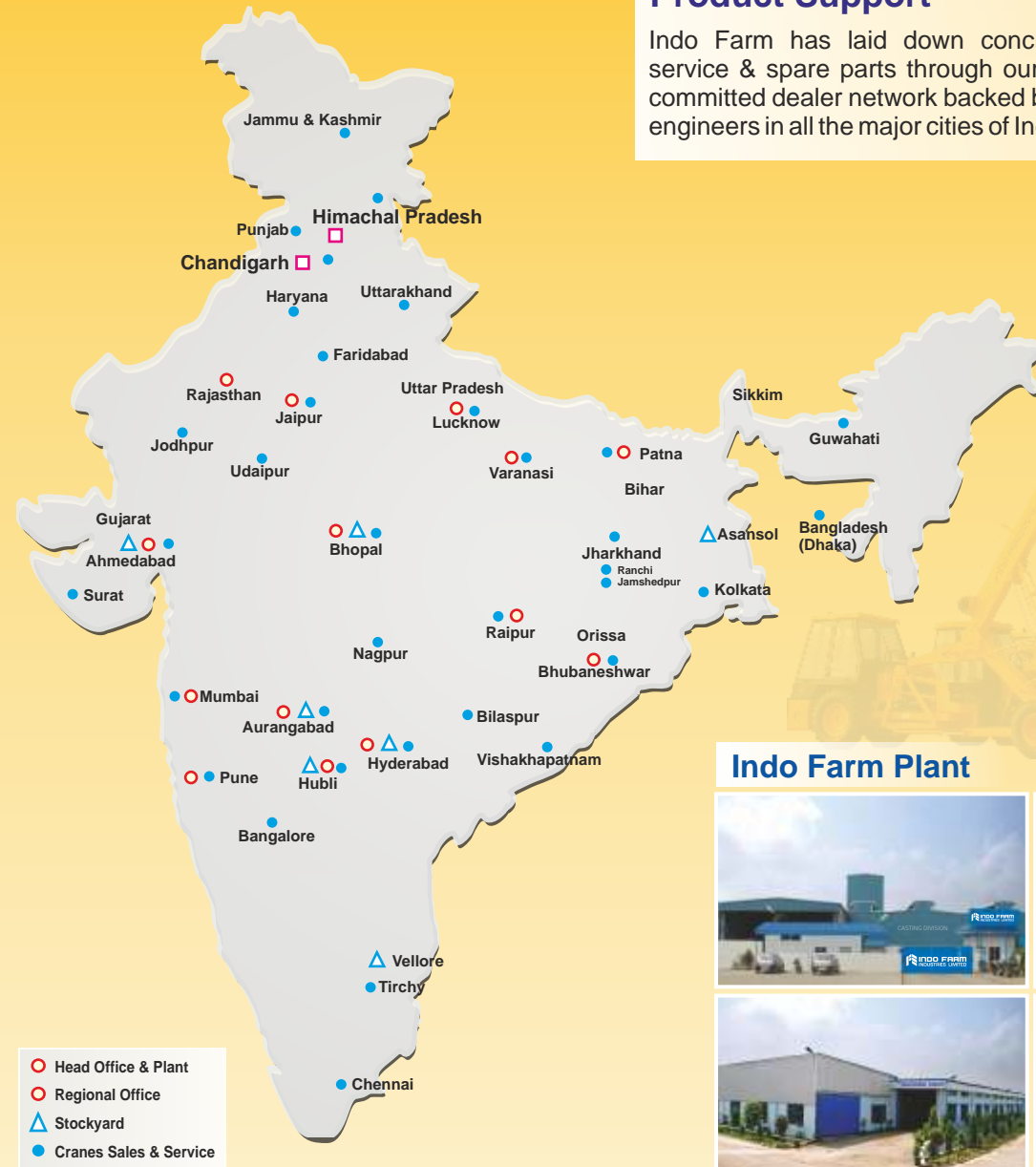
Product Range



INDO POWER-12AV

The Symbol of Strength

All India Network



Product Support

Indo Farm has laid down concrete infrastructure for service & spare parts through our highly dedicated and committed dealer network backed by experienced service engineers in all the major cities of India,

Indo Farm Plant



*Map for graphical representation only. Not to scale.

INDO FARM
EQUIPMENT LIMITED
An ISO 9001:2008 Certified Company



Head Office & Plant :
Export Promotion Industrial Park, Phase-II,
Baddi-173 205, Distt. Solan, H.P. (India),
Tel. : +91-1795-274241 (8 Lines)
Fax : +91-1795-274308-309
Email : mail@indofarm.in
Website : www.indofarm.in

Registered Office :
SCO 859, NAC Manimajra,
Chandigarh-Kalka Road,
Chandigarh-160 101
Tel. : +91-172-2730060, 2730059
Fax : +91-172-2734913

Authorised Dealer

Pick 'N' Carry Hydraulic Mobile Crane

12T 36' (Std)

Load Capacity
12 T

Boom Height
11.1 m

Horizontal reach
7.79 m

Engine Power
50 hp@2200 rpm



INDO FARM
EQUIPMENT LIMITED
An ISO 9001:2008 Certified Company



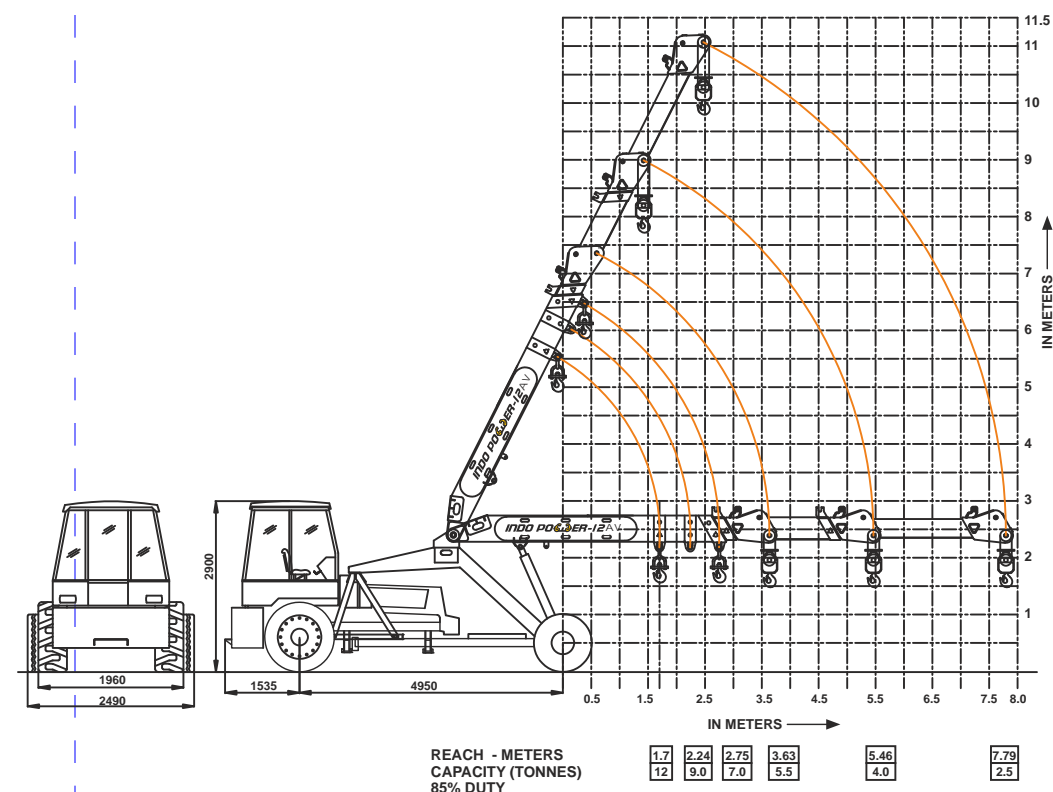
Technical Specifications

Engine	
Model & Type	Indo Farm 3052 DI; Three Cylinder, Water Cooled Diesel Engine Rated power 50 hp @ 2200 rpm.
Transmission	
Type	Heavy duty transmission for crane application. Sliding Mesh, spur teeth gearbox, Eight forward and two reverse speeds with high and low selector.
Speed (Top)	30 kmph.
Clutch	Single plate, heavy duty dry friction type clutch plate especially designed for crane application.
Steering	
Type	Articulated power steering, hydraulically controlled through two double acting hydraulic cylinders.
Articulation	upto 53°
Turning Radius	6.5 m
Operational Timing	
Steering (lock to lock)	6-9 Secs
Boom Raising	18-20 Secs
Boom Lowering	13-15 Secs
Telescoping Extension in	15-18 Secs
Telescoping Extension out	19-21 Secs
Hoist Line Speed	55 m/min. (Single line)
Brakes	
Front Wheel	Pneumatically assisted hydraulic drum brakes.
Rear Wheel	Mechanical disc brakes, actuated through slave cylinders.
Parking	Mechanically actuated at rear wheels.
Tracks	
Front	1930 mm (center of twin wheels)
Rear	1630 mm (center of wheels)
Tyres	
Front	11.00x20 - 16 PR (Four Nos.)
Rear	13.00x24 - 12 PR (Two Nos.)
Boom	
Telescoping	Three part, box type, hydraulically operated.
Derricking	Through two double acting cylinders.
Hoist Mechanism	
Hoist	<ul style="list-style-type: none"> Four falls (capacity 10 T). Fail-safe brakes.

Hydraulic System	
Pump	Vane/Gear type hydraulic pump.
Control Valve	4 spool control valve with built in pressure relief valve for trouble free operation.
Hydraulic Filter	Suction line has a 100 mesh inline strainer while return line has 25 micron full flow filter.
Electrical System	
Type	12V Single battery, Negative earth.
Capacity	
Fuel	60 Liters
Hydraulic	130 Liters
Engine Oil	7.5 Liters
Gear Oil	45 Liters
Operating weight	10010 Kg
Safety System	
	<ul style="list-style-type: none"> Overload audio warning system Safety brakes on hoist Cylinder guard for protection Lock valve on lift cylinder
Standard	
	<ul style="list-style-type: none"> All weather cabin Reflectors Rear view mirror Tool kit Front bumper Lift cylinder guard Turn & reverse lamp
Optional Features/Accessories	
	<ul style="list-style-type: none"> Spark arrester Man carrying basket Fire extinguisher Six falls rope Sequence valve Steering wheel Extra hooks Over hoist warning system Air brake

Features

- 3-Part telescopic boom.
- Aesthetically design spacious cabin with ergonomic controls for ease of operation & visibility.
- Robust chassis for more reliability.
- Steering cylinder of 880 mm stroke to ensure proper steering even in loose, sandy & rocky terrains.
- Heavy duty transmission.
- Top traveling speed of 30 kmph for faster inter-site movements.
- Heavy duty hydraulic winch with integrated safety brakes.
- High ground clearance.



Straight Rear Axle



Heavy Duty Main Frame



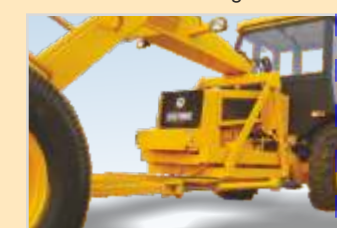
Heavy Duty Winch



Full Length Chassis



Minimum Turning Radius



High Ground Clearance



Air Brakes(Optional)