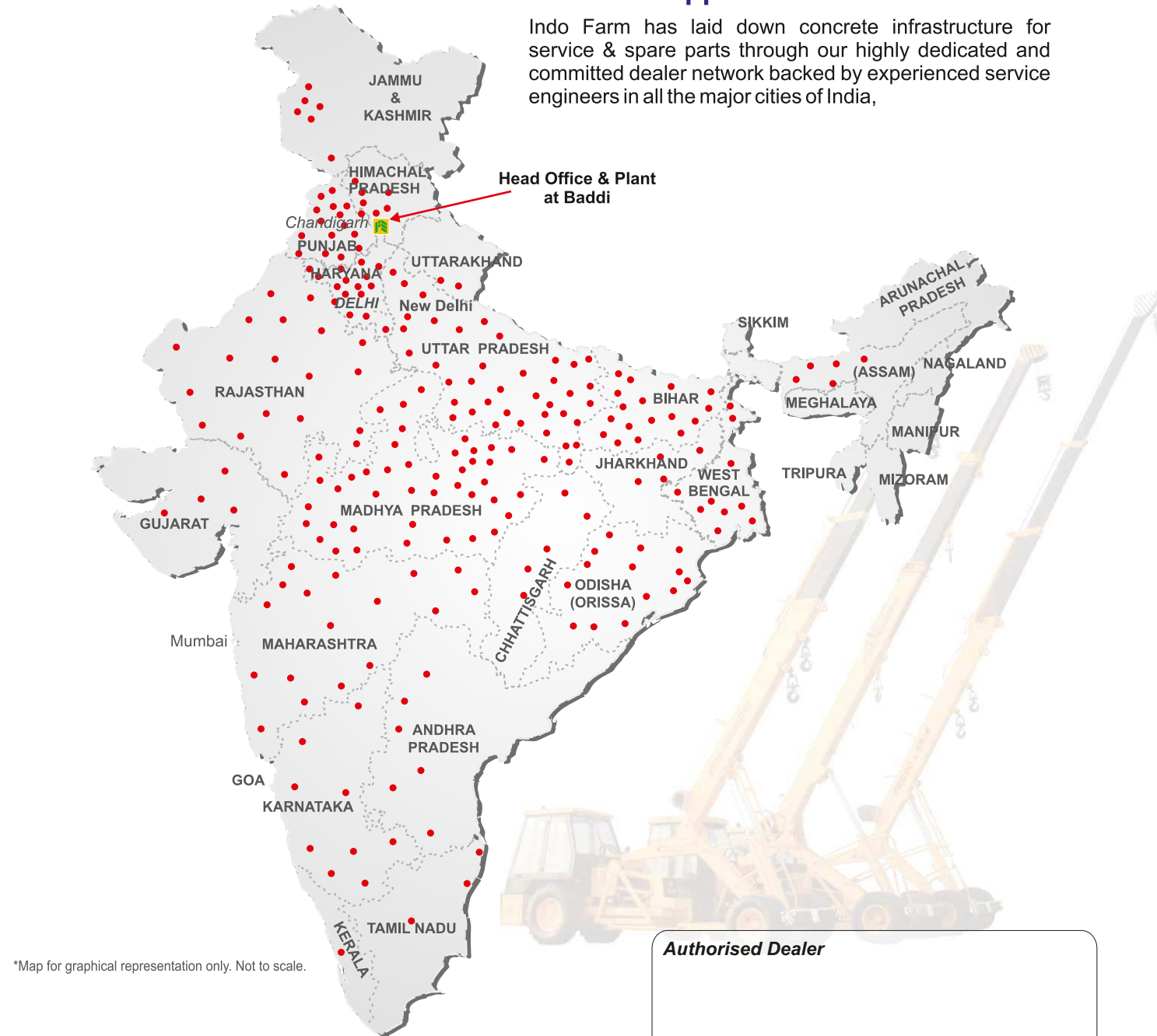


## All India Network

## Product Support

Indo Farm has laid down concrete infrastructure for service & spare parts through our highly dedicated and committed dealer network backed by experienced service engineers in all the major cities of India,



\*Map for graphical representation only. Not to scale.

**INDO FARM**  
EQUIPMENT LIMITED  
An ISO 9001:2008 Certified Company



**Head Office & Plant:**  
Export Promotion Industrial Park, Phase-II,  
Baddi-173 205, Distt. Solan, H.P. (India)  
Tel. : +91-1795-274241-248, Fax : +91-1795-274308-309  
Email : mail@indofarm.in, Website : www.indofarm.in

**Registered Office:**  
SCO 859, NAC Manimajra, Chandigarh-Kalka Road,  
Chandigarh - 160 101  
Tel. : +91-172-2730060, 2730059  
Fax: +91-172-2734913

## Product Range



# INDO POWER-16FNX

## THE SYMBOL OF STRENGTH

## 17T-63' (2WD)

Self Rope Compensation

Pick 'N' Carry Hydraulic Mobile Crane

**Load Capacity**  
17 T

**Boom Height**  
19.2 m, 22.2 m with fly zib

**Horizontal reach**  
16.6 m, 19.7 m with fly zib

**Engine Power**  
60 hp@2200 rpm



## Technical Specifications

### ENGINE

Model & Type Indo Farm - 3065 DI; Four Cylinder, Water Cooled Diesel Engine Rated power 60 hp max @2200 rpm.

### TRANSMISSION

Type Heavy duty transmission for crane application. Sliding mesh Spur teeth gearbox, Eight forward and two reverse speeds with high and low selector.

### AXLE

Front Rigid  
Rear Rigid Mounted with oscillation  
Speed (Top) 30 kmph.  
Gradeability 40% unladen  
Clutch Single plate, heavy duty dry friction type clutch plate especially designed for crane application.  
Drive 2 wheel drive

### STEERING

Type Articulated power steering, hydraulically controlled through two double acting hydraulic rams.  
Articulation upto 40°  
Turning Radius 8.5 m

### BRAKES

Front wheel Fully air operated 'S' cam dual circuit brakes.  
Rear wheel Mechanical disc brakes, actuated through pneumatic brake chamber.  
Parking Air operated fail safe brakes on front wheels.

### TYRES

Front 11.00x20 - 16 PR (4 Nos.)  
Rear 14.00x25 - 20 PR (2 Nos.)  
Wheel Base 4.95 m  
Wheel Tracks  
Front/Rear 1880 mm (center of twin wheels) / 1630 mm

### BOOM

Telescoping 4 part boom, 3 part hydraulically powered & fully synchronised. 4th part power extended and manually pinned for safety.  
Derricking Through two double acting cylinders.

### HOIST MECHANISM

Hoist Four/Six falls with fail safe brake.

### HYDRAULIC SYSTEM

Pump Vane type hydraulic pump.  
Control Valve 3/5/6 spool control valve double acting with built in pressure relief valve for trouble free operation.

### ELECTRICAL SYSTEM

Type 12V, DC Single battery negative earth.

### OVER ALL DIMENSIONS

Length 11375 mm  
Width 2450 mm  
Height 2945 mm

**OPERATING WEIGHT** 13270 Kg

## 17T-63' (2WD)

### Boom Height

19.2 m, 22.2 m with fly zib

### Horizontal reach

16.6 m, 19.7 m with fly zib

## Features

### Safety

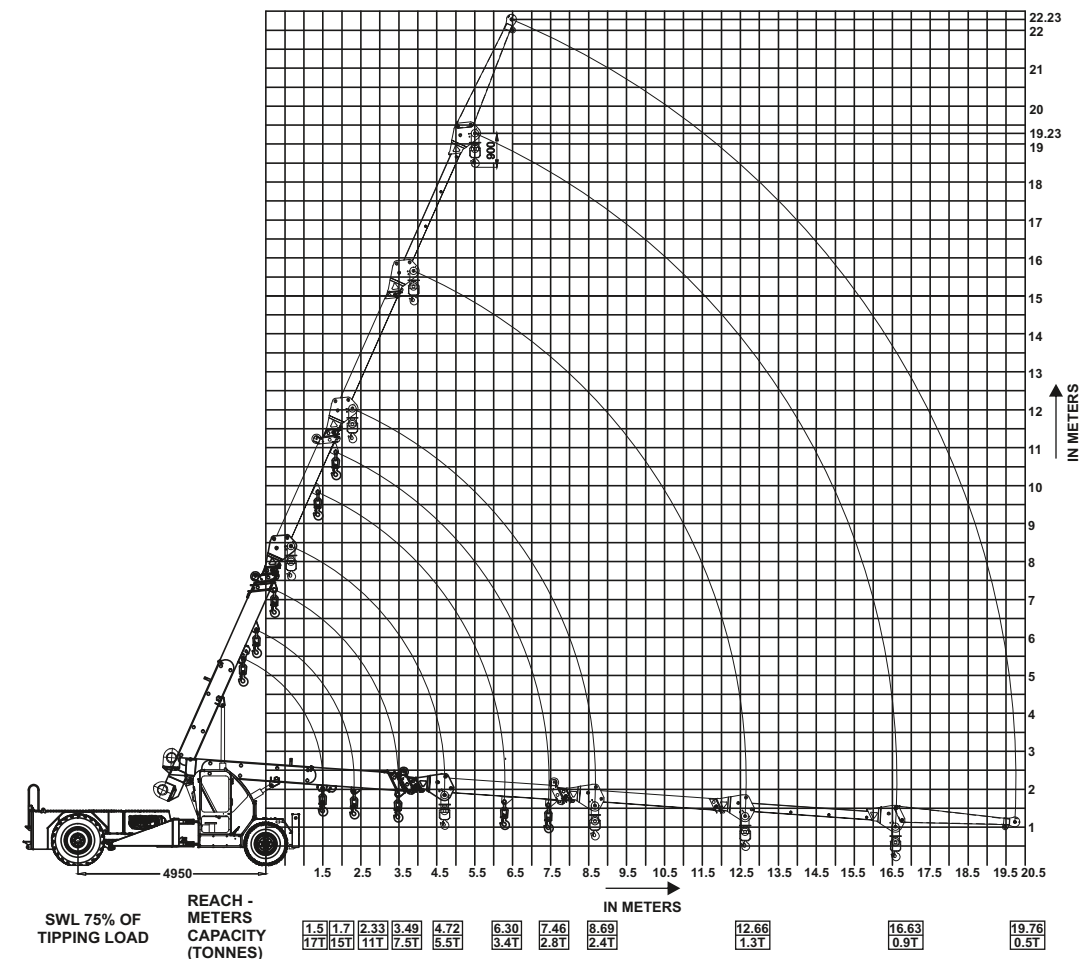
- Fail-safe brakes on hoist.
- Counter balance valve for hose failure protection.
- Self adjusting hook block.

### Standard Accessories

- Air Brakes (Fail Safe)
- Heavy duty winch - Six falls rope
- Outriggers
- All weather cabin
- Reflectors
- Turn & reverse lamp
- Side view mirror Left & Right
- Tool kit
- Reverse gear tuner

### Optional Features/Accessories

- Man carrying basket
- Over hoist warning system
- Spare wheel
- Additional cabin
- Air conditioned cabin
- Dragging winch
- Spark arrestor
- Tyre guard
- Front sensor
- Safe load indicator with hydraulic cutoff
- 3 m fly jib
- Rear view camera
- Helper Seat
- Fire extinguisher
- Beacon light
- Winch camera



## Features

- 4-Part telescopic boom.
- Aesthetically design spacious cabin with ergonomic controls for ease of operation and visibility.
- Robust chassis for more reliability.
- Articulated power steering, Hydraulically controlled through two double acting hydraulic rams to ensure proper steering even in loose, sandy & rocky terrains.
- Heavy duty transmission.
- Top traveling speed of 30 kmph for faster inter-site movements.
- Heavy duty hydraulic winch with integrated safety brakes.
- High ground clearance.

To find out more about this product scan this QR Code



Cabin with better ergonomics



Four side more visibility cabin



Straight Rear Axle



Heavy Duty Winch



High Ground Clearance



Easy for maintenance